

## Product datasheet for **CF813394**

### MYL9 Mouse Monoclonal Antibody [Clone ID: OTI3H6]

#### Product data:

Product Type:	Primary Antibodies
Clone Name:	OTI3H6
Applications:	WB
Recommended Dilution:	WB 1:500
Reactivity:	Human, Mouse, Rat
Host:	Mouse
Isotype:	IgG2b
Clonality:	Monoclonal
Immunogen:	Full length human recombinant protein of human MYL9 (NP_006088) produced in HEK293T cell.
Formulation:	Lyophilized powder (original buffer 1X PBS, pH 7.3, 8% trehalose)
Reconstitution Method:	For reconstitution, we recommend adding 100uL distilled water to a final antibody concentration of about 1 mg/mL. To use this carrier-free antibody for conjugation experiment, we strongly recommend performing another round of desalting process. (OriGene recommends Zeba Spin Desalting Columns, 7KMWCO from Thermo Scientific)
Purification:	Purified from mouse ascites fluids or tissue culture supernatant by affinity chromatography (protein A/G)
Conjugation:	Unconjugated
Storage:	Store at -20°C as received.
Stability:	Stable for 12 months from date of receipt.
Predicted Protein Size:	19.6 kDa
Gene Name:	myosin light chain 9
Database Link:	<a href="#">NP_006088</a> <a href="#">Entrez Gene 98932 Mouse</a> <a href="#">Entrez Gene 296313 Rat</a> <a href="#">Entrez Gene 10398 Human</a> <a href="#">P24844</a>



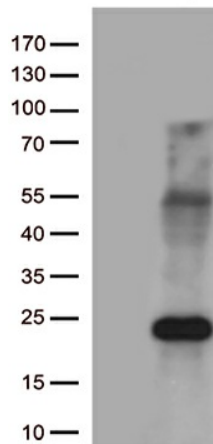
[View online »](#)

**Background:** Myosin, a structural component of muscle, consists of two heavy chains and four light chains. The protein encoded by this gene is a myosin light chain that may regulate muscle contraction by modulating the ATPase activity of myosin heads. The encoded protein binds calcium and is activated by myosin light chain kinase. Two transcript variants encoding different isoforms have been found for this gene. [provided by RefSeq, Jul 2008]

**Synonyms:** LC20; MLC-2C; MLC2; MMIHS4; MRLC1; MYRL2

**Protein Pathways:** Focal adhesion, Leukocyte transendothelial migration, Regulation of actin cytoskeleton, Tight junction, Vascular smooth muscle contraction

### Product images:



HEK293T cells were transfected with the pCMV6-ENTRY control (Cat# [PS100001], Left lane) or pCMV6-ENTRY MYL9 (Cat# [RC211412], Right lane) cDNA for 48 hrs and lysed. Equivalent amounts of cell lysates (5 ug per lane) were separated by SDS-PAGE and immunoblotted with anti-MYL9 (Cat# [TA813394])(1:500).