

## Product datasheet for **CF813254**

### CTLA4 Mouse Monoclonal Antibody [Clone ID: OTI8B5]

#### Product data:

Product Type:	Primary Antibodies
Clone Name:	OTI8B5
Applications:	FC
Recommended Dilution:	FLOW 1:400
Reactivity:	Human
Host:	Mouse
Isotype:	IgG1
Clonality:	Monoclonal
Immunogen:	Full length human recombinant protein of human CTLA4 (NP_005205) produced in HEK293T cell.
Formulation:	Lyophilized powder (original buffer 1X PBS, pH 7.3, 8% trehalose)
Reconstitution Method:	For reconstitution, we recommend adding 100uL distilled water to a final antibody concentration of about 1 mg/mL. To use this carrier-free antibody for conjugation experiment, we strongly recommend performing another round of desalting process. (OriGene recommends Zeba Spin Desalting Columns, 7KMWCO from Thermo Scientific)
Purification:	Purified from mouse ascites fluids or tissue culture supernatant by affinity chromatography (protein A/G)
Conjugation:	Unconjugated
Storage:	Store at -20°C as received.
Stability:	Stable for 12 months from date of receipt.
Predicted Protein Size:	24.66 kDa
Gene Name:	cytotoxic T-lymphocyte associated protein 4
Database Link:	<a href="#">NP_005205</a> <a href="#">Entrez Gene 1493 Human</a> <a href="#">P16410</a>



[View online »](#)

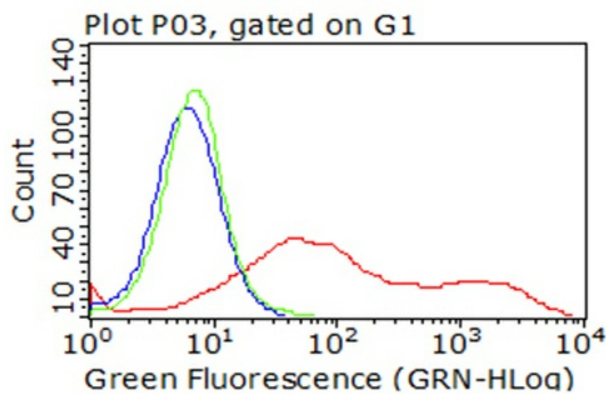
**Background:** This gene is a member of the immunoglobulin superfamily and encodes a protein which transmits an inhibitory signal to T cells. The protein contains a V domain, a transmembrane domain, and a cytoplasmic tail. Alternate transcriptional splice variants, encoding different isoforms, have been characterized. The membrane-bound isoform functions as a homodimer interconnected by a disulfide bond, while the soluble isoform functions as a monomer. Mutations in this gene have been associated with insulin-dependent diabetes mellitus, Graves disease, Hashimoto thyroiditis, celiac disease, systemic lupus erythematosus, thyroid-associated orbitopathy, and other autoimmune diseases. [provided by RefSeq, Jul 2008]

**Synonyms:** ALP55; CD; CD152; CELIAC3; CTLA-4; GRD4; GSE; IDDM12

**Protein Families:** Druggable Genome, Transmembrane

**Protein Pathways:** Autoimmune thyroid disease, Cell adhesion molecules (CAMs), T cell receptor signaling pathway

### Product images:



Flow cytometric analysis of living 293T cells transfected with CTLA4 overexpression plasmid ([RC210150]), Red/empty vector ([PS100001], Blue) using anti-CTLA4 antibody ([TA813254]). Cells incubated with a non-specific antibody (Green) were used as isotype control (1:400).