

## Product datasheet for **CF813060**

### Pancreatic Polypeptide (PPY) Mouse Monoclonal Antibody [Clone ID: OTI1G2]

#### Product data:

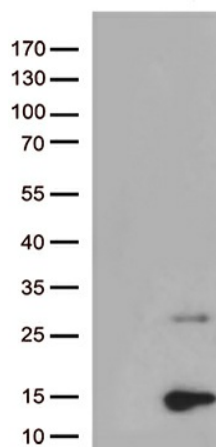
|                        |  |
|------------------------|--|
| Product Type:          | Primary Antibodies   |
| Clone Name:            | OTI1G2   |
| Applications:          | WB   |
| Recommended Dilution:  | WB 1:500   |
| Reactivity:            | Human  |
| Host:                  | Mouse  |
| Isotype:               | IgG2a  |
| Clonality:             | Monoclonal   |
| Immunogen:             | Human recombinant protein fragment corresponding to amino acids 30-88 of human PPY (NP_002713) produced in E.coli.   |
| Formulation:           | Lyophilized powder (original buffer 1X PBS, pH 7.3, 8% trehalose)  |
| Reconstitution Method: | For reconstitution, we recommend adding 100uL distilled water to a final antibody concentration of about 1 mg/mL. To use this carrier-free antibody for conjugation experiment, we strongly recommend performing another round of desalting process. (OriGene recommends Zeba Spin Desalting Columns, 7KMWCO from Thermo Scientific) |
| Purification:          | Purified from mouse ascites fluids or tissue culture supernatant by affinity chromatography (protein A/G)  |
| Conjugation:           | Unconjugated   |
| Storage:               | Store at -20°C as received.  |
| Stability:             | Stable for 12 months from date of receipt.   |
| Gene Name:             | pancreatic polypeptide   |
| Database Link:         | <a href="#">NP_002713</a><br><a href="#">Entrez Gene 5539 Human P01298</a>   |
| Background:            | The physiological role for the icosapeptide has not yet been elucidated. [UniProtKB/Swiss-Prot Function]   |
| Synonyms:              | PNP; PP  |



[View online »](#)

Protein Families: Secreted Protein

### Product images:



HEK293T cells were transfected with the pCMV6-ENTRY control (Cat# [PS100001], Left lane) or pCMV6-ENTRY PPY (Cat# [RC206584], Right lane) cDNA for 48 hrs and lysed. Equivalent amounts of cell lysates (5 ug per lane) were separated by SDS-PAGE and immunoblotted with anti-PPY (Cat# [TA813060])(1:500).