

Product datasheet for **CF813008**

CoREST (RCOR1) Mouse Monoclonal Antibody [Clone ID: OTI9F6]

Product data:

Product Type:	Primary Antibodies
Clone Name:	OTI9F6
Applications:	IHC, WB
Recommended Dilution:	WB 1:500, IHC 1:500
Reactivity:	Human, Mouse, Rat
Host:	Mouse
Isotype:	IgG1
Clonality:	Monoclonal
Immunogen:	Human recombinant protein fragment corresponding to amino acids 256-485 of human RCOR1 (NP_055971) produced in E.coli.
Formulation:	Lyophilized powder (original buffer 1X PBS, pH 7.3, 8% trehalose)
Reconstitution Method:	For reconstitution, we recommend adding 100uL distilled water to a final antibody concentration of about 1 mg/mL. To use this carrier-free antibody for conjugation experiment, we strongly recommend performing another round of desalting process. (OriGene recommends Zeba Spin Desalting Columns, 7KMWCO from Thermo Scientific)
Purification:	Purified from mouse ascites fluids or tissue culture supernatant by affinity chromatography (protein A/G)
Conjugation:	Unconjugated
Storage:	Store at -20°C as received.
Stability:	Stable for 12 months from date of receipt.
Gene Name:	Homo sapiens REST corepressor 1 (RCOR1), mRNA.
Database Link:	NP_055971 Entrez Gene 217864 Mouse Entrez Gene 102554884 Rat Entrez Gene 23186 Human Q9UKL0
Background:	This gene encodes a protein that is well-conserved, downregulated at birth, and with a specific role in determining neural cell differentiation. The encoded protein binds to the C-terminal domain of REST (repressor element-1 silencing transcription factor). [provided by RefSeq, Aug 2011]



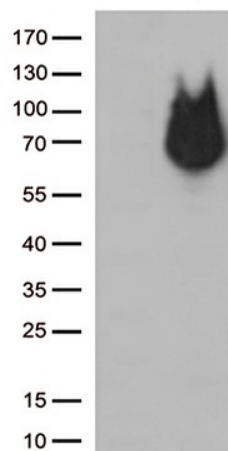
[View online »](#)

Synonyms: COREST; RCOR

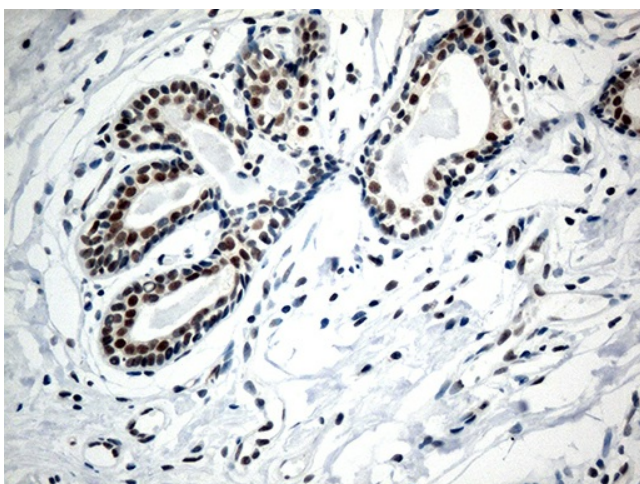
Protein Families: Transcription Factors

Protein Pathways: Huntington's disease

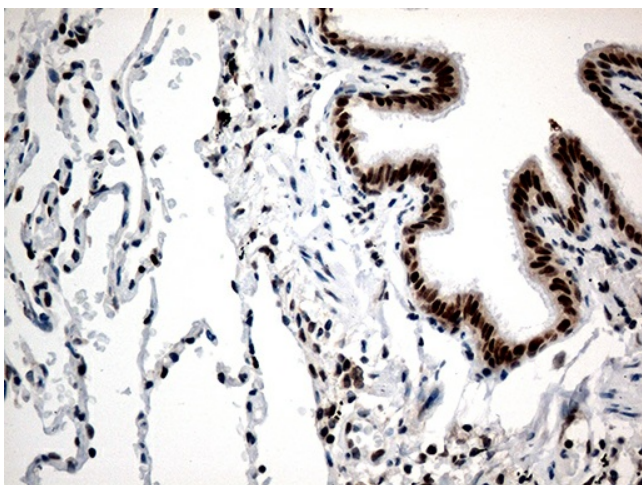
Product images:



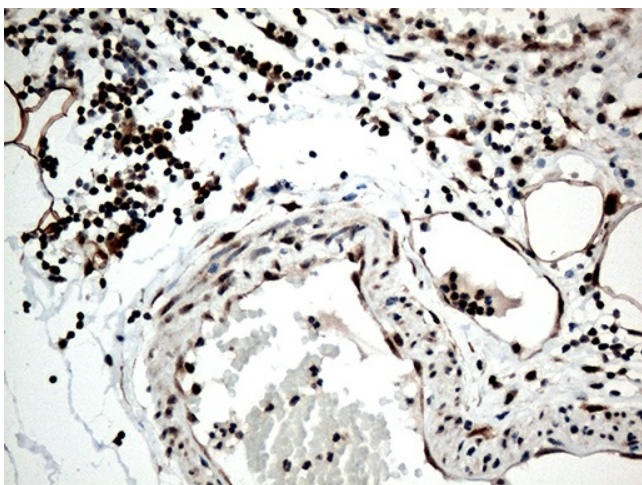
HEK293T cells were transfected with the pCMV6-ENTRY control (Cat# [PS100001], Left lane) or pCMV6-ENTRY RCOR1 (Cat# [RC224027], Right lane) cDNA for 48 hrs and lysed. Equivalent amounts of cell lysates (5 ug per lane) were separated by SDS-PAGE and immunoblotted with anti-RCOR1 (Cat# [TA813008])(1:500).



Immunohistochemical staining of paraffin-embedded Human breast tissue within the normal limits using anti-RCOR1 mouse monoclonal antibody. (Heat-induced epitope retrieval by 1mM EDTA in 10mM Tris buffer (pH8.5) at 120°C for 3min, [TA813008]) (1:500)



Immunohistochemical staining of paraffin-embedded Human lung tissue within the normal limits using anti-RCOR1 mouse monoclonal antibody. (Heat-induced epitope retrieval by 1mM EDTA in 10mM Tris buffer (pH8.5) at 120°C for 3min, [TA813008]) (1:500)



Immunohistochemical staining of paraffin-embedded Human appendix tissue within the normal limits using anti-RCOR1 mouse monoclonal antibody. (Heat-induced epitope retrieval by 1mM EDTA in 10mM Tris buffer (pH8.5) at 120°C for 3min, [TA813008]) (1:500)