

Product datasheet for **CF812988**

LEF1 Mouse Monoclonal Antibody [Clone ID: OTI10A7]

Product data:

Product Type:	Primary Antibodies
Clone Name:	OTI10A7
Applications:	IF, IHC, WB
Recommended Dilution:	WB 1:500, IHC 1:500, IF 1:100
Reactivity:	Human, Rat, Mouse
Host:	Mouse
Isotype:	IgG2b
Clonality:	Monoclonal
Immunogen:	Full length human recombinant protein of human LEF1 (NP_057353) produced in HEK293T cell.
Formulation:	Lyophilized powder (original buffer 1X PBS, pH 7.3, 8% trehalose)
Reconstitution Method:	For reconstitution, we recommend adding 100uL distilled water to a final antibody concentration of about 1 mg/mL. To use this carrier-free antibody for conjugation experiment, we strongly recommend performing another round of desalting process. (OriGene recommends Zeba Spin Desalting Columns, 7KMWCO from Thermo Scientific)
Purification:	Purified from mouse ascites fluids or tissue culture supernatant by affinity chromatography (protein A/G)
Conjugation:	Unconjugated
Storage:	Store at -20°C as received.
Stability:	Stable for 12 months from date of receipt.
Predicted Protein Size:	44 kDa
Gene Name:	lymphoid enhancer binding factor 1
Database Link:	NP_057353 Entrez Gene 16842 Mouse Entrez Gene 161452 Rat Entrez Gene 51176 Human Q9UJU2



[View online »](#)

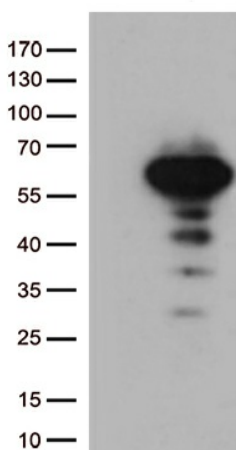
Background: This gene encodes a transcription factor belonging to a family of proteins that share homology with the high mobility group protein-1. The protein encoded by this gene can bind to a functionally important site in the T-cell receptor-alpha enhancer, thereby conferring maximal enhancer activity. This transcription factor is involved in the Wnt signaling pathway, and it may function in hair cell differentiation and follicle morphogenesis. Mutations in this gene have been found in somatic sebaceous tumors. This gene has also been linked to other cancers, including androgen-independent prostate cancer. Alternative splicing results in multiple transcript variants. [provided by RefSeq, Oct 2009]

Synonyms: LEF-1; TCF1ALPHA; TCF7L3; TCF10

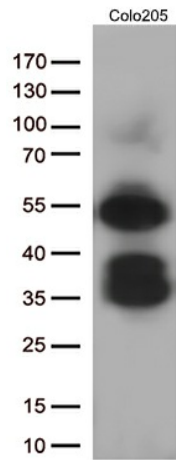
Protein Families: Adult stem cells, Druggable Genome, ES Cell Differentiation/IPS, Transcription Factors

Protein Pathways: Acute myeloid leukemia, Adherens junction, Arrhythmogenic right ventricular cardiomyopathy (ARVC), Basal cell carcinoma, Colorectal cancer, Endometrial cancer, Melanogenesis, Pathways in cancer, Prostate cancer, Thyroid cancer, Wnt signaling pathway

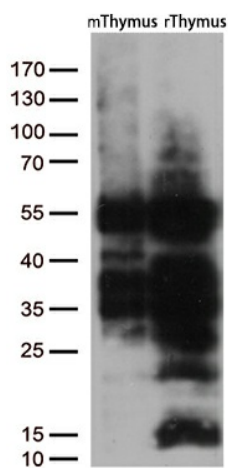
Product images:



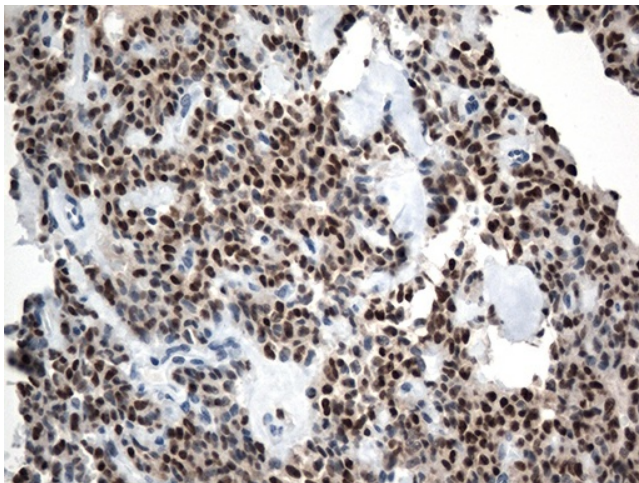
HEK293T cells were transfected with the pCMV6-ENTRY control (Cat# [PS100001], Left lane) or pCMV6-ENTRY LEF1 (Cat# [RC208663], Right lane) cDNA for 48 hrs and lysed. Equivalent amounts of cell lysates (5 ug per lane) were separated by SDS-PAGE and immunoblotted with anti-LEF1 (Cat# [TA812988])(1:500). Positive lysates [LY402529] (100ug) and [LC402529] (20ug) can be purchased separately from OriGene.



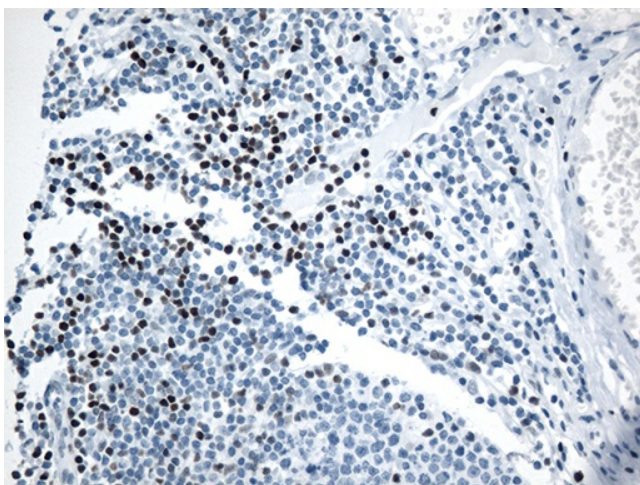
Western blot analysis of extracts (35ug) from Colo205 cells by using anti-LEF1 monoclonal antibody (1:500).



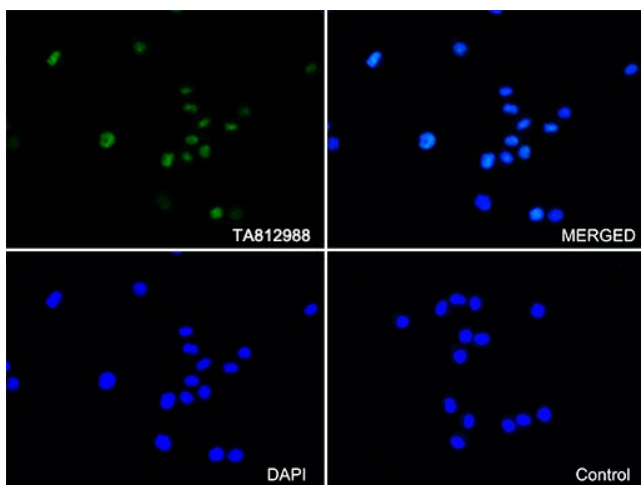
Western blot analysis of extracts (35ug) from 2 different tissues by using anti-LEF1 monoclonal antibody (1:500).



Immunohistochemical staining of paraffin-embedded Carcinoma of Human pancreas tissue using anti-LEF1 mouse monoclonal antibody. (Heat-induced epitope retrieval by 1mM EDTA in 10mM Tris buffer (pH8.5) at 120°C for 3min, [TA812988]) (1:500)



Immunohistochemical staining of paraffin-embedded Human tonsil within the normal limits using anti-LEF1 mouse monoclonal antibody. (Heat-induced epitope retrieval by 1mM EDTA in 10mM Tris buffer (pH8.5) at 120°C for 3min, [TA812988]) (1:500)



Immunofluorescent staining of Colo205 cells using anti-LEF1 antibody ([TA812988]/green, upper left; DAPI/blue, lower left; MERGED, upper right) or Isotype control (MERGED, lower right) (1:100).