

Product datasheet for **CF812966**

Papillary renal cell carcinoma (PRCC) Mouse Monoclonal Antibody [Clone ID: OT15H7]

Product data:

Product Type:	Primary Antibodies
Clone Name:	OT15H7
Applications:	WB
Recommended Dilution:	WB 1:500
Reactivity:	Human, Mouse, Rat
Host:	Mouse
Isotype:	IgG1
Clonality:	Monoclonal
Immunogen:	Human recombinant protein fragment corresponding to amino acids 135-491 of human PRCC (NP_005964) produced in E.coli.
Formulation:	Lyophilized powder (original buffer 1X PBS, pH 7.3, 8% trehalose)
Reconstitution Method:	For reconstitution, we recommend adding 100uL distilled water to a final antibody concentration of about 1 mg/mL. To use this carrier-free antibody for conjugation experiment, we strongly recommend performing another round of desalting process. (OriGene recommends Zeba Spin Desalting Columns, 7KMWCO from Thermo Scientific)
Purification:	Purified from mouse ascites fluids or tissue culture supernatant by affinity chromatography (protein A/G)
Conjugation:	Unconjugated
Storage:	Store at -20°C as received.
Stability:	Stable for 12 months from date of receipt.
Predicted Protein Size:	52.2 kDa
Gene Name:	proline rich mitotic checkpoint control factor
Database Link:	NP_005964 Entrez Gene 94315 Mouse Entrez Gene 310687 Rat Entrez Gene 5546 Human Q92733



[View online »](#)

Background:

This gene encodes a protein that may play a role in pre-mRNA splicing. Chromosomal translocations (X;1)(p11;q21) that result in fusion of this gene to TFE3 (GeneID 7030) have been associated with papillary renal cell carcinoma. A PRCC-TFE3 fusion protein is expressed in affected carcinomas and is likely associated with altered gene transactivation. This fusion protein has also been associated with disruption of the cell cycle. [provided by RefSeq, Aug 2010]

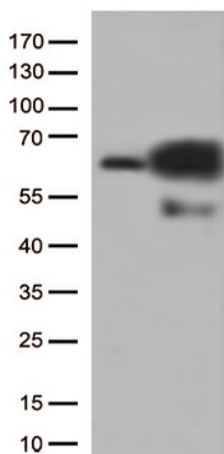
Synonyms:

RCCP1; TPRC

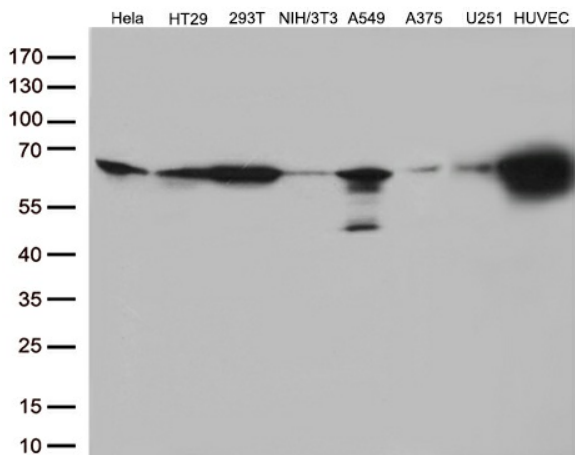
Protein Families:

Druggable Genome

Product images:



HEK293T cells were transfected with the pCMV6-ENTRY control (Cat# [PS100001], Left lane) or pCMV6-ENTRY PRCC (Cat# [RC203805], Right lane) cDNA for 48 hrs and lysed. Equivalent amounts of cell lysates (5 ug per lane) were separated by SDS-PAGE and immunoblotted with anti-PRCC (Cat# [TA812966]). Positive lysates [LY416956] (100ug) and [LC416956] (20ug) can be purchased separately from OriGene.



Western blot analysis of extracts (35ug) from 8 different cell lines by using anti-PRCC monoclonal antibody (1:500).