

Product datasheet for **CF812952**

ARSB Mouse Monoclonal Antibody [Clone ID: OTI2A5]

Product data:

| | |
|-------------------------|--|
| Product Type: | Primary Antibodies |
| Clone Name: | OTI2A5 |
| Applications: | WB |
| Recommended Dilution: | WB 1:500 |
| Reactivity: | Human |
| Host: | Mouse |
| Isotype: | IgG1 |
| Clonality: | Monoclonal |
| Immunogen: | Human recombinant protein fragment corresponding to amino acids 84-423 of human ARSB (NP_000037) produced in E.coli. |
| Formulation: | Lyophilized powder (original buffer 1X PBS, pH 7.3, 8% trehalose) |
| Reconstitution Method: | For reconstitution, we recommend adding 100uL distilled water to a final antibody concentration of about 1 mg/mL. To use this carrier-free antibody for conjugation experiment, we strongly recommend performing another round of desalting process. (OriGene recommends Zeba Spin Desalting Columns, 7KMWCO from Thermo Scientific) |
| Purification: | Purified from mouse ascites fluids or tissue culture supernatant by affinity chromatography (protein A/G) |
| Conjugation: | Unconjugated |
| Storage: | Shipped at -20°C or with ice packs, Upon delivery store at -20°C. Dilute in PBS(pH7.3) if necessary. Stable for 12 months from date of receipt. Avoid repeated freeze-thaws. |
| Stability: | Stable for 12 months from date of receipt. |
| Predicted Protein Size: | 59.69 kDa |
| Gene Name: | arylsulfatase B |
| Database Link: | NP_000037 Entrez Gene 411 Human P15848 |



[View online »](#)

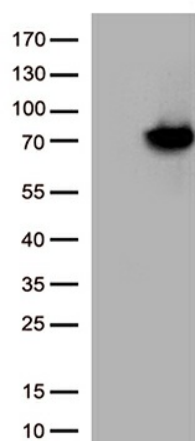
Background: Arylsulfatase B encoded by this gene belongs to the sulfatase family. The arylsulfatase B homodimer hydrolyzes sulfate groups of N-Acetyl-D-galactosamine, chondroitin sulfate, and dermatan sulfate. The protein is targeted to the lysosome. Mucopolysaccharidosis type VI is an autosomal recessive lysosomal storage disorder resulting from a deficiency of arylsulfatase B. Two alternatively spliced transcript variants encoding distinct isoforms have been found for this gene. [provided by RefSeq, Dec 2016]

Synonyms: ASB; G4S; MPS6

Protein Families: Druggable Genome

Protein Pathways: Glycosaminoglycan degradation, Lysosome, Metabolic pathways

Product images:



HEK293T cells were transfected with the pCMV6-ENTRY control (Cat# [PS100001], Left lane) or pCMV6-ENTRY ARSB (Cat# [RC214604], Right lane) cDNA for 48 hrs and lysed. Equivalent amounts of cell lysates (5 ug per lane) were separated by SDS-PAGE and immunoblotted with anti-ARSB antibody (Cat# [TA812952])(1:500)