

## Product datasheet for **CF812881**

### PCDH15 Mouse Monoclonal Antibody [Clone ID: OTI7F10]

#### Product data:

Product Type:	Primary Antibodies
Clone Name:	OTI7F10
Applications:	WB
Recommended Dilution:	WB 1:500
Reactivity:	Human, Mouse, Rat
Host:	Mouse
Isotype:	IgG1
Clonality:	Monoclonal
Immunogen:	Human recombinant protein fragment corresponding to amino acids 160-400 of human PCDH15 (NP_001136235) produced in E.coli.
Formulation:	Lyophilized powder (original buffer 1X PBS, pH 7.3, 8% trehalose)
Reconstitution Method:	For reconstitution, we recommend adding 100uL distilled water to a final antibody concentration of about 1 mg/mL. To use this carrier-free antibody for conjugation experiment, we strongly recommend performing another round of desalting process. (OriGene recommends Zeba Spin Desalting Columns, 7KMWCO from Thermo Scientific)
Purification:	Purified from mouse ascites fluids or tissue culture supernatant by affinity chromatography (protein A/G)
Conjugation:	Unconjugated
Storage:	Store at -20°C as received.
Stability:	Stable for 12 months from date of receipt.
Predicted Protein Size:	217.06 kDa
Gene Name:	protocadherin related 15
Database Link:	<a href="#">NP_001136235</a> <a href="#">Entrez Gene 11994 Mouse</a> <a href="#">Entrez Gene 690865 Rat</a> <a href="#">Entrez Gene 65217 Human</a> <a href="#">Q96QU1</a>



[View online »](#)

**Background:**

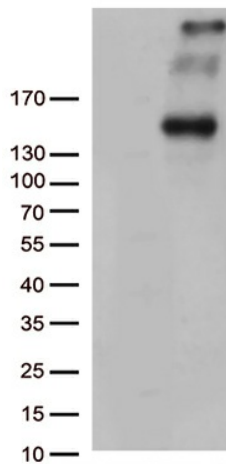
This gene is a member of the cadherin superfamily. Family members encode integral membrane proteins that mediate calcium-dependent cell-cell adhesion. It plays an essential role in maintenance of normal retinal and cochlear function. Mutations in this gene result in hearing loss and Usher Syndrome Type IF (USH1F). Extensive alternative splicing resulting in multiple isoforms has been observed in the mouse ortholog. Similar alternatively spliced transcripts are inferred to occur in human, and additional variants are likely to occur. [provided by RefSeq, Dec 2008]

**Synonyms:**

CDHR15; DFNB23; USH1F

**Protein Families:**

Druggable Genome, Transmembrane

**Product images:**

HEK293T cells were transfected with the pCMV6-ENTRY control (Cat# [PS100001], Left lane) or pCMV6-ENTRY PCDH15 (Cat# [RC226513], Right lane) cDNA for 48 hrs and lysed. Equivalent amounts of cell lysates (5 ug per lane) were separated by SDS-PAGE and immunoblotted with anti-PCDH15 (Cat# [TA812881])(1:500). Positive lysates [LY428262] (100ug) and [LC428262] (20ug) can be purchased separately from OriGene.