

## Product datasheet for **CF812808**

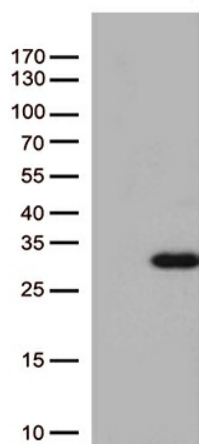
### Rab5 (RAB5A) Mouse Monoclonal Antibody [Clone ID: OTI6D9]

#### Product data:

Product Type:	Primary Antibodies
Clone Name:	OTI6D9
Applications:	WB
Recommended Dilution:	WB 1:500
Reactivity:	Human, Mouse, Rat
Host:	Mouse
Isotype:	IgG1
Clonality:	Monoclonal
Immunogen:	Full length human recombinant protein of human RAB5A (NP_004153) produced in E.coli.
Formulation:	Lyophilized powder (original buffer 1X PBS, pH 7.3, 8% trehalose)
Reconstitution Method:	For reconstitution, we recommend adding 100uL distilled water to a final antibody concentration of about 1 mg/mL. To use this carrier-free antibody for conjugation experiment, we strongly recommend performing another round of desalting process. (OriGene recommends Zeba Spin Desalting Columns, 7KMWCO from Thermo Scientific)
Purification:	Purified from mouse ascites fluids or tissue culture supernatant by affinity chromatography (protein A/G)
Conjugation:	Unconjugated
Storage:	Store at -20°C as received.
Stability:	Stable for 12 months from date of receipt.
Predicted Protein Size:	23.5 kDa
Gene Name:	RAB5A, member RAS oncogene family
Database Link:	<a href="#">NP_004153</a> <a href="#">Entrez Gene 64633 RatEntrez Gene 271457 MouseEntrez Gene 5868 Human P20339</a>
Synonyms:	RAB5
Protein Families:	Druggable Genome
Protein Pathways:	Amyotrophic lateral sclerosis (ALS), Endocytosis



[View online »](#)

**Product images:**

HEK293T cells were transfected with the pCMV6-ENTRY control (Cat# [PS100001], Left lane) or pCMV6-ENTRY RAB5A (Cat# [RC203873], Right lane) cDNA for 48 hrs and lysed. Equivalent amounts of cell lysates (5 ug per lane) were separated by SDS-PAGE and immunoblotted with anti-RAB5A (Cat# [TA812808])(1:500).