

Product datasheet for **CF812774**

ARMS2 Mouse Monoclonal Antibody [Clone ID: OTI2G1]

Product data:

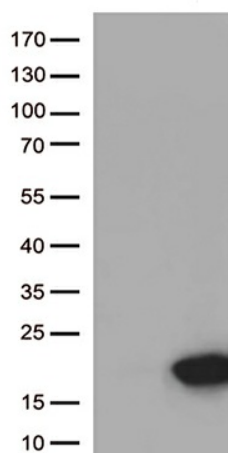
| | |
|-------------------------|--|
| Product Type: | Primary Antibodies |
| Clone Name: | OTI2G1 |
| Applications: | WB |
| Recommended Dilution: | WB 1:500 |
| Reactivity: | Human |
| Host: | Mouse |
| Isotype: | IgG1 |
| Clonality: | Monoclonal |
| Immunogen: | Full length human recombinant protein of human ARMS2 (NP_001093137) produced in E.coli. |
| Formulation: | Lyophilized powder (original buffer 1X PBS, pH 7.3, 8% trehalose) |
| Reconstitution Method: | For reconstitution, we recommend adding 100uL distilled water to a final antibody concentration of about 1 mg/mL. To use this carrier-free antibody for conjugation experiment, we strongly recommend performing another round of desalting process. (OriGene recommends Zeba Spin Desalting Columns, 7KMWCO from Thermo Scientific) |
| Purification: | Purified from mouse ascites fluids or tissue culture supernatant by affinity chromatography (protein A/G) |
| Conjugation: | Unconjugated |
| Storage: | Store at -20°C as received. |
| Stability: | Stable for 12 months from date of receipt. |
| Predicted Protein Size: | 11.3 kDa |
| Gene Name: | age-related maculopathy susceptibility 2 |
| Database Link: | NP_001093137 Entrez Gene 387715 Human P0C7Q2 |
| Background: | This gene encodes a protein that is thought to play a role in diseases in the elderly. Mutations in this gene have been associated with age-related macular degeneration. [provided by RefSeq, Oct 2008] |



[View online »](#)

Synonyms: ARMD8

Product images:



HEK293T cells were transfected with the pCMV6-ENTRY control (Cat# [PS100001], Left lane) or pCMV6-ENTRY ARMS2 (Cat# [RC223747], Right lane) cDNA for 48 hrs and lysed. Equivalent amounts of cell lysates (5 ug per lane) were separated by SDS-PAGE and immunoblotted with anti-ARMS2 (Cat# [TA812774])(1:500).