

Product datasheet for **CF812761**

PSMA1 Mouse Monoclonal Antibody [Clone ID: OTI6C4]

Product data:

Product Type:	Primary Antibodies
Clone Name:	OTI6C4
Applications:	IF, WB
Recommended Dilution:	WB 1:250
Reactivity:	Human, Mouse, Rat
Host:	Mouse
Isotype:	IgG2a
Clonality:	Monoclonal
Immunogen:	Full length human recombinant protein of human PSMA1 (NP_002777) produced in E.coli.
Formulation:	Lyophilized powder (original buffer 1X PBS, pH 7.3, 8% trehalose)
Reconstitution Method:	For reconstitution, we recommend adding 100uL distilled water to a final antibody concentration of about 1 mg/mL. To use this carrier-free antibody for conjugation experiment, we strongly recommend performing another round of desalting process. (OriGene recommends Zeba Spin Desalting Columns, 7KMWCO from Thermo Scientific)
Purification:	Purified from mouse ascites fluids or tissue culture supernatant by affinity chromatography (protein A/G)
Conjugation:	Unconjugated
Storage:	Store at -20°C as received.
Stability:	Stable for 12 months from date of receipt.
Predicted Protein Size:	29.4 kDa
Gene Name:	proteasome 20S subunit alpha 1
Database Link:	NP_002777 Entrez Gene 26440 Mouse Entrez Gene 29668 Rat Entrez Gene 5682 Human P25786



[View online »](#)

Background:

The proteasome is a multicatalytic proteinase complex with a highly ordered ring-shaped 20S core structure. The core structure is composed of 4 rings of 28 non-identical subunits; 2 rings are composed of 7 alpha subunits and 2 rings are composed of 7 beta subunits. Proteasomes are distributed throughout eukaryotic cells at a high concentration and cleave peptides in an ATP/ubiquitin-dependent process in a non-lysosomal pathway. An essential function of a modified proteasome, the immunoproteasome, is the processing of class I MHC peptides. This gene encodes a member of the peptidase T1A family, that is a 20S core alpha subunit. Alternative splicing results in multiple transcript variants encoding distinct isoforms. [provided by RefSeq, Jan 2009]

Synonyms:

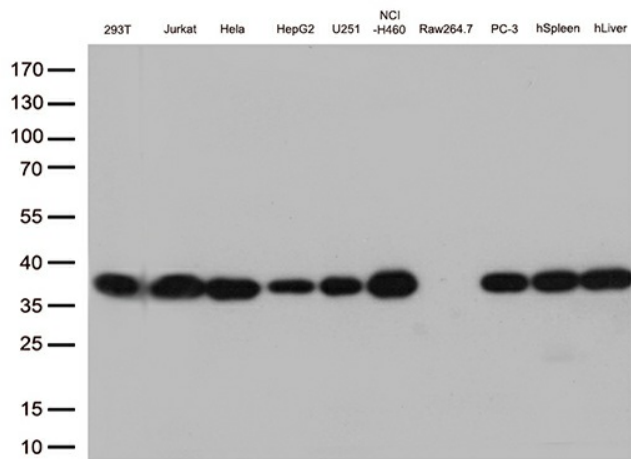
HC2; HEL-S-275; NU; PROS30

Protein Families:

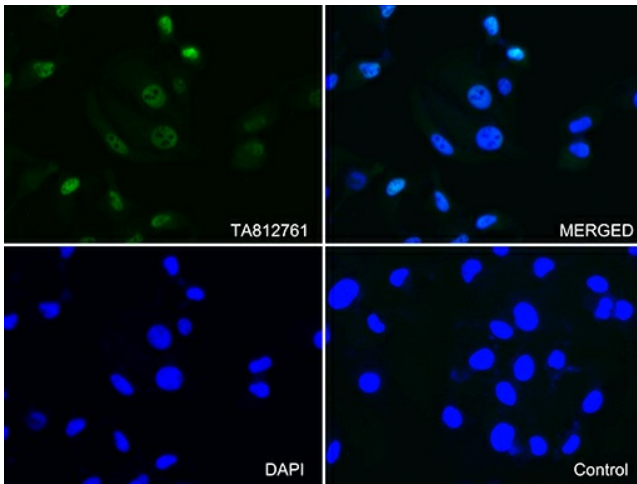
Druggable Genome, Protease

Protein Pathways:

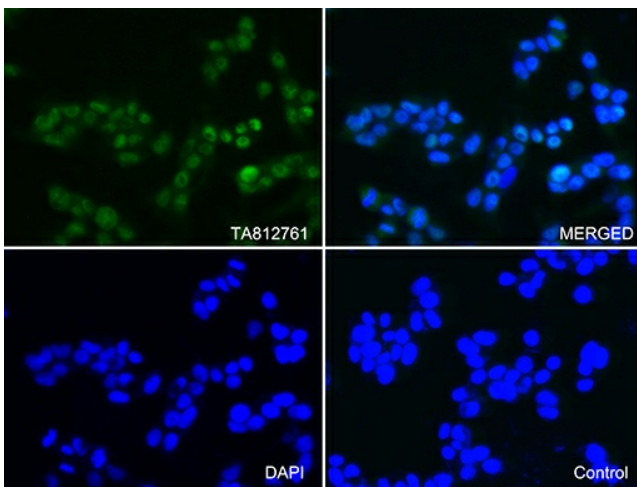
Proteasome

Product images:

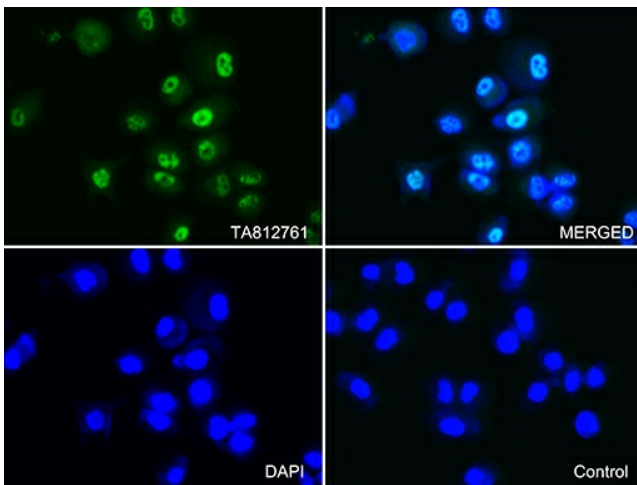
Western blot analysis of extracts (35ug) from 8 cell lines and 2 tissue lysates by using anti-PSMA1 monoclonal antibody (1:250).



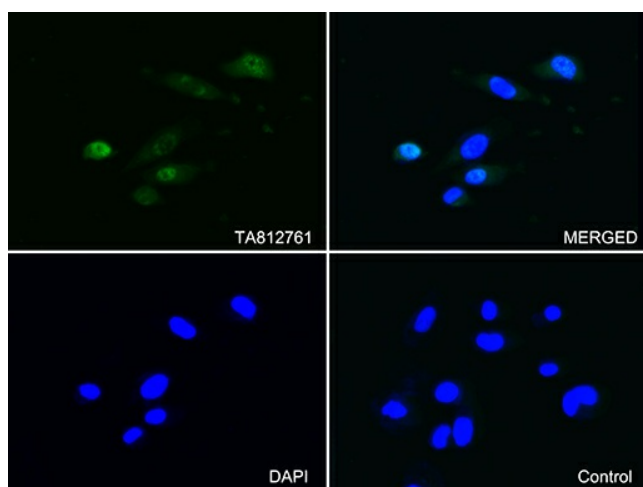
Immunofluorescent staining of HeLa cells using anti-PSMA1 antibody ([TA812761]/green, upper left; DAPI/blue, lower left; MERGED, upper right) or Isotype control (MERGED, lower right) (1:100).



Immunofluorescent staining of HEK293T cells using anti-PSMA1 antibody ([TA812761]/green, upper left; DAPI/blue, lower left; MERGED, upper right) or Isotype control (MERGED, lower right) (1:100).



Immunofluorescent staining of NCI-H460 cells using anti-PSMA1 antibody ([TA812761]/green, upper left; DAPI/blue, lower left; MERGED, upper right) or Isotype control (MERGED, lower right) (1:100).



Immunofluorescent staining of PC3 cells using anti-PSMA1 antibody ([TA812761]/green, upper left; DAPI/blue, lower left; MERGED, upper right) or Isotype control (MERGED, lower right) (1:100).