

Product datasheet for **CF812760**

Aspartyl Aminopeptidase (DNPEP) Mouse Monoclonal Antibody [Clone ID: OTI8H3]

Product data:

Product Type:	Primary Antibodies
Clone Name:	OTI8H3
Applications:	WB
Recommended Dilution:	WB 1:500
Reactivity:	Human, Dog, Rat, Monkey, Mouse
Host:	Mouse
Isotype:	IgG1
Clonality:	Monoclonal
Immunogen:	Full length human recombinant protein of human DNPEP (NP_036232) produced in HEK293T cell.
Formulation:	Lyophilized powder (original buffer 1X PBS, pH 7.3, 8% trehalose)
Reconstitution Method:	For reconstitution, we recommend adding 100uL distilled water to a final antibody concentration of about 1 mg/mL. To use this carrier-free antibody for conjugation experiment, we strongly recommend performing another round of desalting process. (OriGene recommends Zeba Spin Desalting Columns, 7KMWCO from Thermo Scientific)
Purification:	Purified from mouse ascites fluids or tissue culture supernatant by affinity chromatography (protein A/G)
Conjugation:	Unconjugated
Storage:	Store at -20°C as received.
Stability:	Stable for 12 months from date of receipt.
Predicted Protein Size:	53.2 kDa
Gene Name:	aspartyl aminopeptidase
Database Link:	NP_036232 Entrez Gene 13437 Mouse Entrez Gene 301529 Rat Entrez Gene 478922 Dog Entrez Gene 703180 Monkey Entrez Gene 23549 Human Q9ULA0



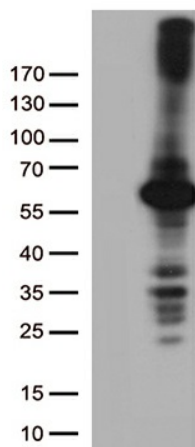
[View online »](#)

Background: The protein encoded by this gene is an aminopeptidase which prefers acidic amino acids, and specifically favors aspartic acid over glutamic acid. It is thought to be a cytosolic protein involved in general metabolism of intracellular proteins. Several transcript variants encoding different isoforms have been found for this gene. [provided by RefSeq, Jan 2016]

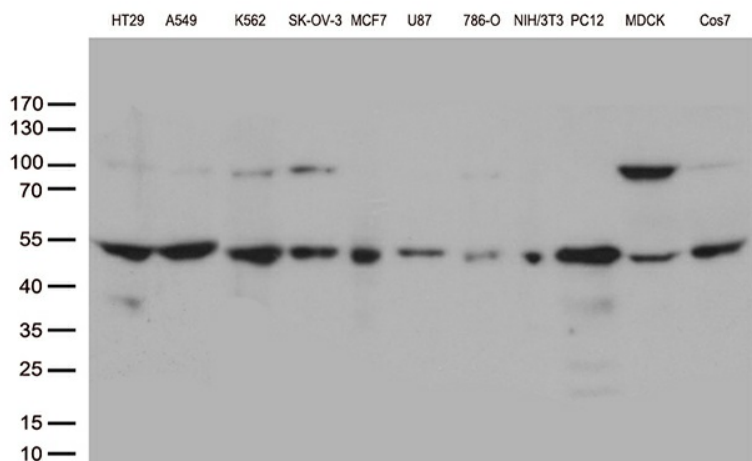
Synonyms: ASPEP; DAP

Protein Families: Druggable Genome, Protease

Product images:



HEK293T cells were transfected with the pCMV6-ENTRY control (Cat# [PS100001], Left lane) or pCMV6-ENTRY DNPEP (Cat# [RC200104], Right lane) cDNA for 48 hrs and lysed. Equivalent amounts of cell lysates (5 ug per lane) were separated by SDS-PAGE and immunoblotted with anti-DNPEP (Cat# [TA812760])(1:500). Positive lysates [LY402151] (100ug) and [LC402151] (20ug) can be purchased separately from OriGene.



Western blot analysis of extracts (35ug) from 11 different cell lines by using anti-DNPEP monoclonal antibody (1:500).