

Product datasheet for **CF812721**

M6PR Mouse Monoclonal Antibody [Clone ID: OTI2F3]

Product data:

Product Type:	Primary Antibodies
Clone Name:	OTI2F3
Applications:	WB
Recommended Dilution:	WB 1:500
Reactivity:	Human, Dog, Monkey, Mouse, Rat
Host:	Mouse
Isotype:	IgG1
Clonality:	Monoclonal
Immunogen:	Human recombinant protein fragment corresponding to amino acids 27-185 of human M6PR (NP_002346) produced in E.coli.
Formulation:	Lyophilized powder (original buffer 1X PBS, pH 7.3, 8% trehalose)
Reconstitution Method:	For reconstitution, we recommend adding 100uL distilled water to a final antibody concentration of about 1 mg/mL. To use this carrier-free antibody for conjugation experiment, we strongly recommend performing another round of desalting process. (OriGene recommends Zeba Spin Desalting Columns, 7KMWCO from Thermo Scientific)
Purification:	Purified from mouse ascites fluids or tissue culture supernatant by affinity chromatography (protein A/G)
Conjugation:	Unconjugated
Storage:	Store at -20°C as received.
Stability:	Stable for 12 months from date of receipt.
Predicted Protein Size:	30.99 kDa
Gene Name:	mannose-6-phosphate receptor, cation dependent
Database Link:	NP_002346 Entrez Gene 17113 Mouse Entrez Gene 312689 Rat Entrez Gene 477700 Dog Entrez Gene 716696 Monkey Entrez Gene 4074 Human P20645



[View online »](#)

Background:

Transport of phosphorylated lysosomal enzymes from the Golgi complex and the cell surface to lysosomes. Lysosomal enzymes bearing phosphomannosyl residues bind specifically to mannose-6-phosphate receptors in the Golgi apparatus and the resulting receptor-ligand complex is transported to an acidic prelysosomal compartment where the low pH mediates the dissociation of the complex. [UniProtKB/Swiss-Prot Function]

Synonyms:

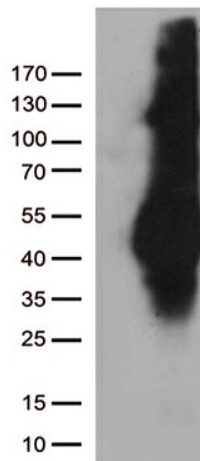
CD-M6PR; CD-MPR; MPR-46; MPR 46; MPR46; SMPR

Protein Families:

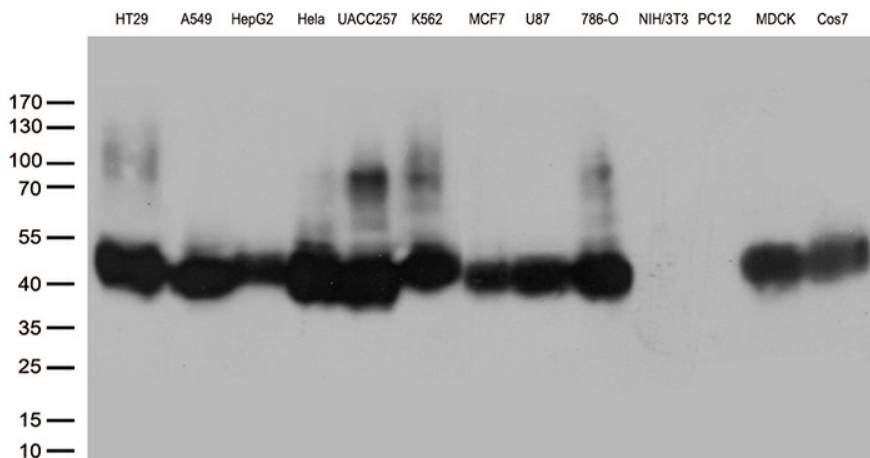
Druggable Genome, Transmembrane

Protein Pathways:

Lysosome

Product images:


HEK293T cells were transfected with the pCMV6-ENTRY control (Cat# [PS100001], Left lane) or pCMV6-ENTRY M6PR (Cat# [RC201277], Right lane) cDNA for 48 hrs and lysed. Equivalent amounts of cell lysates (5 ug per lane) were separated by SDS-PAGE and immunoblotted with anti-M6PR (Cat# [TA812721])(1:500). Positive lysates [LY419372] (100ug) and [LC419372] (20ug) can be purchased separately from OriGene.



Western blot analysis of extracts (35ug) from 13 different cell lines by using anti-M6PR monoclonal antibody (1:500).