

Product datasheet for **CF812717**

C1orf19 (TSEN15) Mouse Monoclonal Antibody [Clone ID: OTI5A3]

Product data:

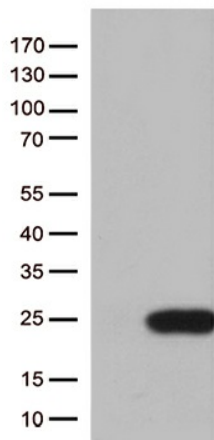
Product Type:	Primary Antibodies
Clone Name:	OTI5A3
Applications:	WB
Recommended Dilution:	WB 1:250~500
Reactivity:	Human, Rat, Mouse
Host:	Mouse
Isotype:	IgG1
Clonality:	Monoclonal
Immunogen:	Full length human recombinant protein of human TSEN15 (NP_443197) produced in E.coli.
Formulation:	Lyophilized powder (original buffer 1X PBS, pH 7.3, 8% trehalose)
Reconstitution Method:	For reconstitution, we recommend adding 100uL distilled water to a final antibody concentration of about 1 mg/mL. To use this carrier-free antibody for conjugation experiment, we strongly recommend performing another round of desalting process. (OriGene recommends Zeba Spin Desalting Columns, 7KMWCO from Thermo Scientific)
Purification:	Purified from mouse ascites fluids or tissue culture supernatant by affinity chromatography (protein A/G)
Conjugation:	Unconjugated
Storage:	Store at -20°C as received.
Stability:	Stable for 12 months from date of receipt.
Predicted Protein Size:	18.5 kDa
Gene Name:	tRNA splicing endonuclease subunit 15
Database Link:	NP_443197 Entrez Gene 289083 RatEntrez Gene 116461 Human Q8WW01
Background:	This gene encodes a subunit of the tRNA splicing endonuclease, which catalyzes the removal of introns from tRNA precursors. Alternative splicing results in multiple transcript variants. There is a pseudogene of this gene on chromosome 17. [provided by RefSeq, Jul 2014]



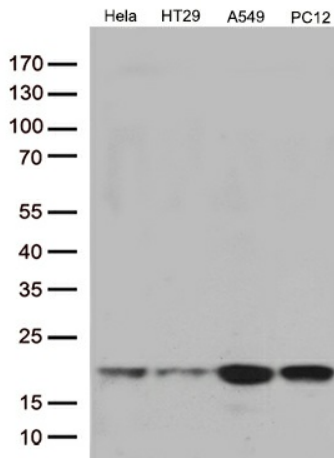
[View online »](#)

Synonyms: C1orf19; PCH2F; sen15

Product images:



HEK293T cells were transfected with the pCMV6-ENTRY control (Left lane) or pCMV6-ENTRY TSEN15 ([RC205519], Right lane) cDNA for 48 hrs and lysed. Equivalent amounts of cell lysates (5 ug per lane) were separated by SDS-PAGE and immunoblotted with anti-TSEN15 (1:500). Positive lysates [LY409366] (100ug) and [LC409366] (20ug) can be purchased separately from OriGene.



Western blot analysis of extracts (35ug) from 4 different cell lines by using anti-TSEN15 monoclonal antibody (1:250).