

## Product datasheet for **CF812659**

### **MMP11 Mouse Monoclonal Antibody [Clone ID: OTI3E10]**

#### **Product data:**

<b>Product Type:</b>	Primary Antibodies
<b>Clone Name:</b>	OTI3E10
<b>Applications:</b>	WB
<b>Recommended Dilution:</b>	WB 1:500
<b>Reactivity:</b>	Human
<b>Host:</b>	Mouse
<b>Isotype:</b>	IgG1
<b>Clonality:</b>	Monoclonal
<b>Immunogen:</b>	Human recombinant protein fragment corresponding to amino acids 239-488 of human MMP11 (NP_005931) produced in E.coli.
<b>Formulation:</b>	Lyophilized powder (original buffer 1X PBS, pH 7.3, 8% trehalose)
<b>Reconstitution Method:</b>	For reconstitution, we recommend adding 100uL distilled water to a final antibody concentration of about 1 mg/mL. To use this carrier-free antibody for conjugation experiment, we strongly recommend performing another round of desalting process. (OriGene recommends Zeba Spin Desalting Columns, 7KMWCO from Thermo Scientific)
<b>Purification:</b>	Purified from mouse ascites fluids or tissue culture supernatant by affinity chromatography (protein A/G)
<b>Conjugation:</b>	Unconjugated
<b>Storage:</b>	Store at -20°C as received.
<b>Stability:</b>	Stable for 12 months from date of receipt.
<b>Predicted Protein Size:</b>	54.59 kDa
<b>Gene Name:</b>	matrix metalloproteinase 11
<b>Database Link:</b>	<a href="#">NP_005931</a> <a href="#">Entrez Gene 4320 Human P24347</a>



[View online »](#)

**Background:**

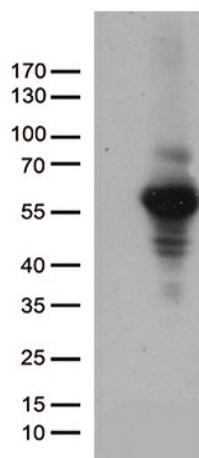
Proteins of the matrix metalloproteinase (MMP) family are involved in the breakdown of extracellular matrix in normal physiological processes, such as embryonic development, reproduction, and tissue remodeling, as well as in disease processes, such as arthritis and metastasis. Most MMP's are secreted as inactive proproteins which are activated when cleaved by extracellular proteinases. However, the enzyme encoded by this gene is activated intracellularly by furin within the constitutive secretory pathway. Also in contrast to other MMP's, this enzyme cleaves alpha 1-proteinase inhibitor but weakly degrades structural proteins of the extracellular matrix. [provided by RefSeq, Jul 2008]

**Synonyms:**

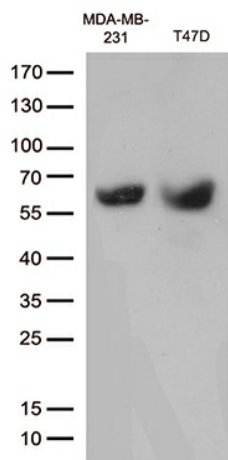
SL-3; ST3; STMY3

**Protein Families:**

Druggable Genome, Protease

**Product images:**

HEK293T cells were transfected with the pCMV6-ENTRY control (Cat# [PS100001], Left lane) or pCMV6-ENTRY MMP11 (Cat# [RC209223], Right lane) cDNA for 48 hrs and lysed. Equivalent amounts of cell lysates (5 ug per lane) were separated by SDS-PAGE and immunoblotted with anti-MMP11 (Cat# [TA812659])(1:500). Positive lysates [LY416967] (100ug) and [LC416967] (20ug) can be purchased separately from OriGene.



Western blot analysis of extracts (35ug) from 2 cell lines lysates by using anti-MMP11 monoclonal antibody (1:500).