

## Product datasheet for **CF812553**

### CD27 Mouse Monoclonal Antibody [Clone ID: OTI5C10]

#### Product data:

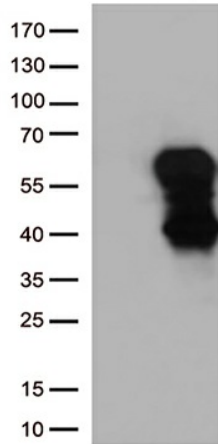
Product Type:	Primary Antibodies
Clone Name:	OTI5C10
Applications:	FC, WB
Recommended Dilution:	WB 1:500, FLOW 1:100
Reactivity:	Human
Host:	Mouse
Isotype:	IgG1
Clonality:	Monoclonal
Immunogen:	Full length human recombinant protein of human CD27 (NP_001233) produced in HEK293T cell.
Formulation:	Lyophilized powder (original buffer 1X PBS, pH 7.3, 8% trehalose)
Reconstitution Method:	For reconstitution, we recommend adding 100uL distilled water to a final antibody concentration of about 1 mg/mL. To use this carrier-free antibody for conjugation experiment, we strongly recommend performing another round of desalting process. (OriGene recommends Zeba Spin Desalting Columns, 7KMWCO from Thermo Scientific)
Purification:	Purified from mouse ascites fluids or tissue culture supernatant by affinity chromatography (protein A/G)
Conjugation:	Unconjugated
Storage:	Store at -20°C as received.
Stability:	Stable for 12 months from date of receipt.
Predicted Protein Size:	29.16 kDa
Gene Name:	CD27 molecule
Database Link:	<a href="#">NP_001233</a> <a href="#">Entrez Gene 939 Human</a> <a href="#">P26842</a>
Background:	Receptor for CD70/CD27L. May play a role in survival of activated T-cells. May play a role in apoptosis through association with SIVA1. [UniProtKB/Swiss-Prot Function]



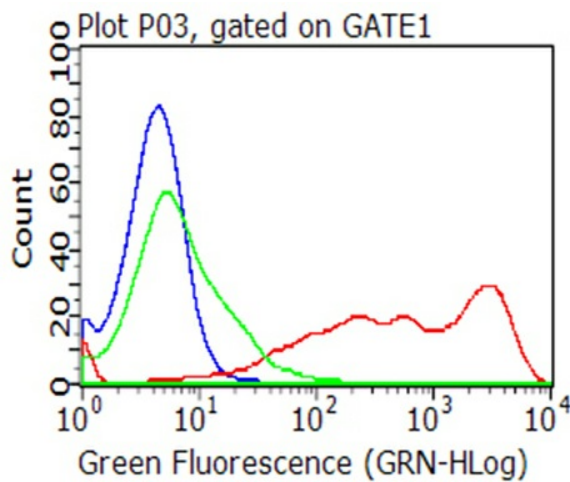
[View online »](#)

**Synonyms:** S152; S152. LPFS2; T14; TNFRSF7; Tp55  
**Protein Families:** Druggable Genome, Transmembrane  
**Protein Pathways:** Cytokine-cytokine receptor interaction

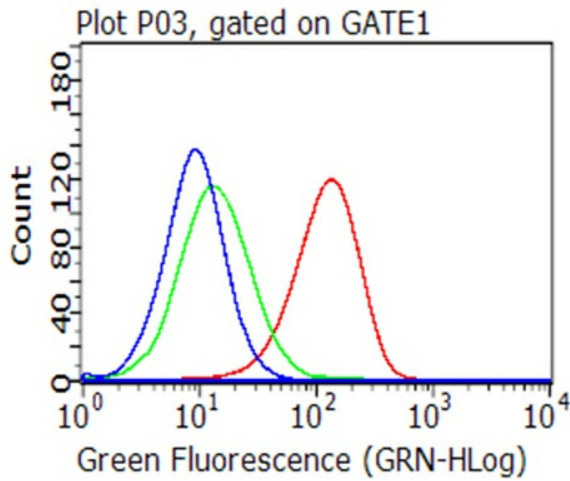
**Product images:**



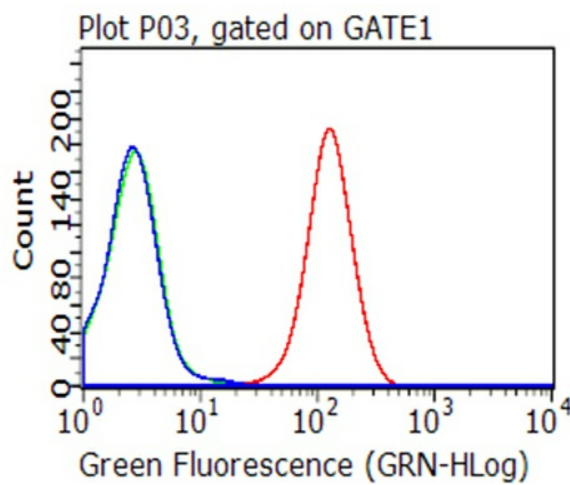
HEK293T cells were transfected with the pCMV6-ENTRY control (Left lane) or pCMV6-ENTRY CD27 ([RC204252], Right lane) cDNA for 48 hrs and lysed. Equivalent amounts of cell lysates (5 ug per lane) were separated by SDS-PAGE and immunoblotted with anti-CD27 (1:500).



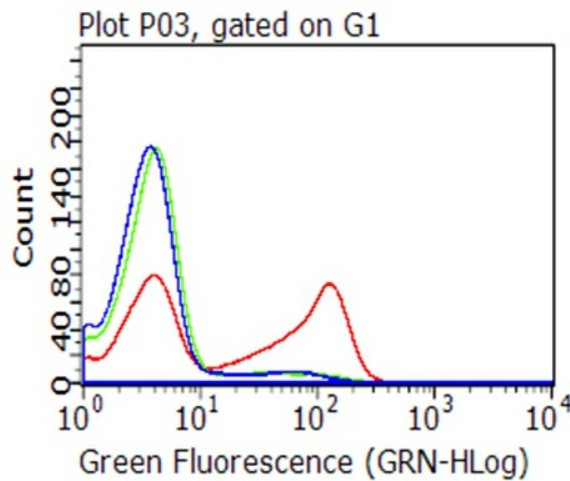
Flow cytometric analysis of living 293T cells transfected with CD27 overexpression plasmid ([RC204252]), Red/empty vector ([PS100001], Blue) using anti-CD27 antibody ([TA812553]). Cells incubated with a non-specific antibody (Green) were used as isotype control (1:100).



Flow cytometric analysis of living Raji cells, using anti-CD27 antibody ([TA812553], Red), compared to an isotype control (green), and a PBS control (blue) (1:100).



Flow cytometric analysis of living Ramos cells, using anti-CD27 antibody ([TA812553], Red), compared to an isotype control (green), and a PBS control (blue) (1:100).



Flow cytometric analysis of living PBMCs, using anti-CD27 antibody ([TA812553], Red), compared to an isotype control (green), and a PBS control (blue) (1:100).