

## Product datasheet for **CF812514**

### **Gamma tubulin complex component 3 (TUBGCP3) Mouse Monoclonal Antibody [Clone ID: OTI2A1]**

#### **Product data:**

<b>Product Type:</b>	Primary Antibodies
<b>Clone Name:</b>	OTI2A1
<b>Applications:</b>	WB
<b>Recommended Dilution:</b>	WB 1:500
<b>Reactivity:</b>	Human, Mouse
<b>Host:</b>	Mouse
<b>Isotype:</b>	IgG1
<b>Clonality:</b>	Monoclonal
<b>Immunogen:</b>	Human recombinant protein fragment corresponding to amino acids 338-456 of human TUBGCP3 (NP_006313) produced in E.coli.
<b>Formulation:</b>	Lyophilized powder (original buffer 1X PBS, pH 7.3, 8% trehalose)
<b>Reconstitution Method:</b>	For reconstitution, we recommend adding 100uL distilled water to a final antibody concentration of about 1 mg/mL. To use this carrier-free antibody for conjugation experiment, we strongly recommend performing another round of desalting process. (OriGene recommends Zeba Spin Desalting Columns, 7KMWCO from Thermo Scientific)
<b>Purification:</b>	Purified from mouse ascites fluids or tissue culture supernatant by affinity chromatography (protein A/G)
<b>Conjugation:</b>	Unconjugated
<b>Storage:</b>	Shipped at -20°C or with ice packs, Upon delivery store at -20°C. Dilute in PBS(pH7.3) if necessary. Stable for 12 months from date of receipt. Avoid repeated freeze-thaws.
<b>Stability:</b>	Stable for 12 months from date of receipt.
<b>Predicted Protein Size:</b>	103.6 kDa
<b>Gene Name:</b>	tubulin gamma complex associated protein 3
<b>Database Link:</b>	<a href="#">NP_006313</a> <a href="#">Entrez Gene 259279 Mouse</a> <a href="#">Entrez Gene 10426 Human</a> <a href="#">Q96CW5</a>



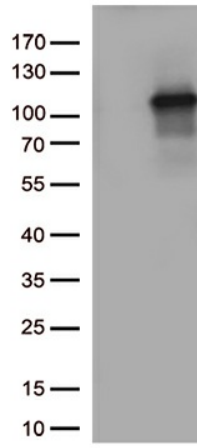
[View online »](#)

**Background:** Gamma-tubulin complex is necessary for microtubule nucleation at the centrosome. [UniProtKB/Swiss-Prot Function]

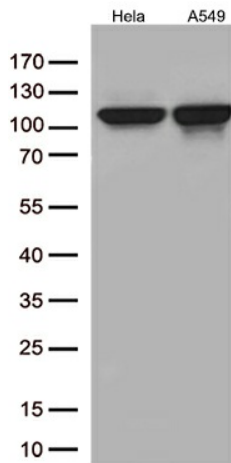
**Synonyms:** 104p; ALP6; GCP3; Grip104; SPBC98; Spc98; Spc98p

**Protein Families:** Druggable Genome

**Product images:**



HEK293T cells were transfected with the pCMV6-ENTRY control (Left lane) or pCMV6-ENTRY TUBGCP3 ([RC207395], Right lane) cDNA for 48 hrs and lysed. Equivalent amounts of cell lysates (5 ug per lane) were separated by SDS-PAGE and immunoblotted with anti-TUBGCP3.(1:500)



Western blot analysis of extracts (35ug) from 2 cell lines lysates by using anti-TUBGCP3 monoclonal antibody. (1:500)