

## Product datasheet for **CF812472**

### **MGC13096 (PDCD2L) Mouse Monoclonal Antibody [Clone ID: OTI4E3]**

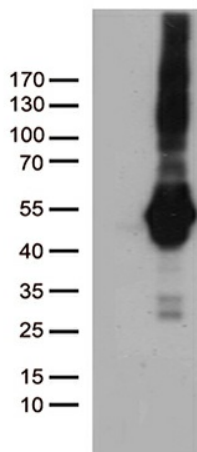
#### **Product data:**

<b>Product Type:</b>	Primary Antibodies
<b>Clone Name:</b>	OTI4E3
<b>Applications:</b>	WB
<b>Recommended Dilution:</b>	WB 1:500
<b>Reactivity:</b>	Human
<b>Host:</b>	Mouse
<b>Isotype:</b>	IgG2b
<b>Clonality:</b>	Monoclonal
<b>Immunogen:</b>	Full length human recombinant protein of human PDCD2L (NP_115722) produced in HEK293T cell.
<b>Formulation:</b>	Lyophilized powder (original buffer 1X PBS, pH 7.3, 8% trehalose)
<b>Reconstitution Method:</b>	For reconstitution, we recommend adding 100uL distilled water to a final antibody concentration of about 1 mg/mL. To use this carrier-free antibody for conjugation experiment, we strongly recommend performing another round of desalting process. (OriGene recommends Zeba Spin Desalting Columns, 7KMWCO from Thermo Scientific)
<b>Purification:</b>	Purified from mouse ascites fluids or tissue culture supernatant by affinity chromatography (protein A/G)
<b>Conjugation:</b>	Unconjugated
<b>Storage:</b>	Store at -20°C as received.
<b>Stability:</b>	Stable for 12 months from date of receipt.
<b>Predicted Protein Size:</b>	39.2 kDa
<b>Gene Name:</b>	programmed cell death 2 like
<b>Database Link:</b>	<a href="#">NP_115722</a> <a href="#">Entrez Gene 84306 Human</a> <a href="#">Q9BRP1</a>

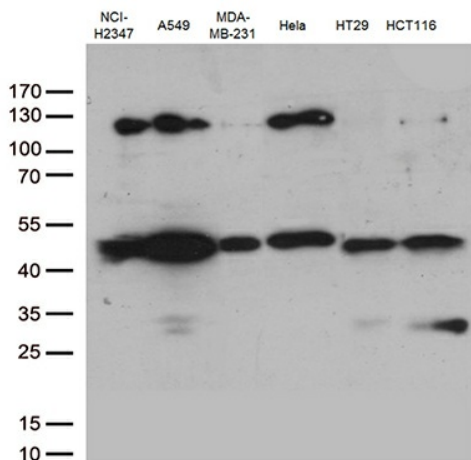


[View online »](#)

**Product images:**



HEK293T cells were transfected with the pCMV6-ENTRY control (Cat# [PS100001], Left lane) or pCMV6-ENTRY PDCD2L (Cat# [RC202997], Right lane) cDNA for 48 hrs and lysed. Equivalent amounts of cell lysates (5 ug per lane) were separated by SDS-PAGE and immunoblotted with anti-PDCD2L (Cat# [TA812472])(1:500). Positive lysates [LY410183] (100ug) and [LC410183] (20ug) can be purchased separately from OriGene.



Western blot analysis of extracts (35ug) from 6 cell lines lysates by using anti-PDCD2L monoclonal antibody (1:500).