

Product datasheet for **CF812466**

HB EGF (HBEGF) Mouse Monoclonal Antibody [Clone ID: OTI6F4]

Product data:

| | |
|-------------------------|--|
| Product Type: | Primary Antibodies |
| Clone Name: | OTI6F4 |
| Applications: | WB |
| Recommended Dilution: | WB 1:2000 |
| Reactivity: | Human |
| Host: | Mouse |
| Isotype: | IgG2b |
| Clonality: | Monoclonal |
| Immunogen: | Human recombinant protein fragment corresponding to amino acids 20-208 of human HBEGF (NP_001936) produced in E.coli. |
| Formulation: | Lyophilized powder (original buffer 1X PBS, pH 7.3, 8% trehalose) |
| Reconstitution Method: | For reconstitution, we recommend adding 100uL distilled water to a final antibody concentration of about 1 mg/mL. To use this carrier-free antibody for conjugation experiment, we strongly recommend performing another round of desalting process. (OriGene recommends Zeba Spin Desalting Columns, 7KMWCO from Thermo Scientific) |
| Purification: | Purified from mouse ascites fluids or tissue culture supernatant by affinity chromatography (protein A/G) |
| Conjugation: | Unconjugated |
| Storage: | Store at -20°C as received. |
| Stability: | Stable for 12 months from date of receipt. |
| Predicted Protein Size: | 22.9 kDa |
| Gene Name: | heparin binding EGF like growth factor |
| Database Link: | NP_001936 Entrez Gene 1839 Human Q99075 |



[View online »](#)

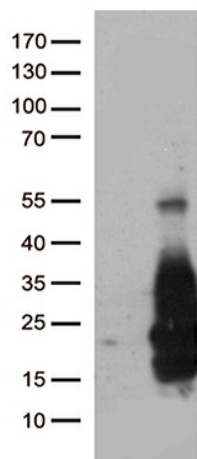
Background: Growth factor that mediates its effects via EGFR, ERBB2 and ERBB4. Required for normal cardiac valve formation and normal heart function. Promotes smooth muscle cell proliferation. May be involved in macrophage-mediated cellular proliferation. It is mitogenic for fibroblasts, but not endothelial cells. It is able to bind EGF receptor/EGFR with higher affinity than EGF itself and is a far more potent mitogen for smooth muscle cells than EGF. Also acts as a diphtheria toxin receptor. [UniProtKB/Swiss-Prot Function]

Synonyms: DTR; DTS; DTSE; HEGFL

Protein Families: Druggable Genome, Secreted Protein, Transmembrane

Protein Pathways: Epithelial cell signaling in Helicobacter pylori infection, ErbB signaling pathway, GnRH signaling pathway

Product images:



HEK293T cells were transfected with the pCMV6-ENTRY control (Left lane) or pCMV6-ENTRY HBEGF ([RC207688], Right lane) cDNA for 48 hrs and lysed. Equivalent amounts of cell lysates (5 ug per lane) were separated by SDS-PAGE and immunoblotted with anti-HBEGF (1:2000). Positive lysates [LY400718] (100ug) and [LC400718] (20ug) can be purchased separately from OriGene.