

Product datasheet for **CF812334**

KAT5 Mouse Monoclonal Antibody [Clone ID: OTI6E1]

Product data:

Product Type:	Primary Antibodies
Clone Name:	OTI6E1
Applications:	WB
Recommended Dilution:	WB 1:500
Reactivity:	Human, Mouse, Rat
Host:	Mouse
Isotype:	IgG1
Clonality:	Monoclonal
Immunogen:	Human recombinant protein fragment corresponding to amino acids 227-504 of human KAT5 (NP_006379) produced in E.coli.
Formulation:	Lyophilized powder (original buffer 1X PBS, pH 7.3, 8% trehalose)
Reconstitution Method:	For reconstitution, we recommend adding 100uL distilled water to a final antibody concentration of about 1 mg/mL. To use this carrier-free antibody for conjugation experiment, we strongly recommend performing another round of desalting process. (OriGene recommends Zeba Spin Desalting Columns, 7KMWCO from Thermo Scientific)
Purification:	Purified from mouse ascites fluids or tissue culture supernatant by affinity chromatography (protein A/G)
Conjugation:	Unconjugated
Storage:	Store at -20°C as received.
Stability:	Stable for 12 months from date of receipt.
Predicted Protein Size:	58.4 kDa
Gene Name:	lysine acetyltransferase 5
Database Link:	NP_006379 Entrez Gene 81601 Mouse Entrez Gene 192218 Rat Entrez Gene 10524 Human Q92993



[View online »](#)

Background:

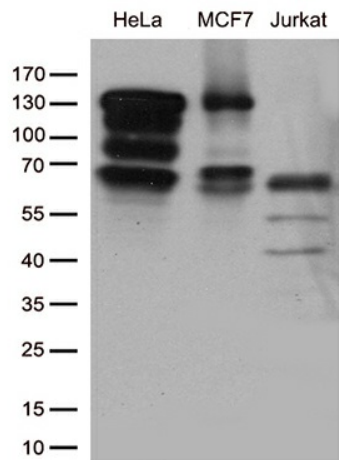
The protein encoded by this gene belongs to the MYST family of histone acetyl transferases (HATs) and was originally isolated as an HIV-1 TAT-interactive protein. HATs play important roles in regulating chromatin remodeling, transcription and other nuclear processes by acetylating histone and nonhistone proteins. This protein is a histone acetylase that has a role in DNA repair and apoptosis and is thought to play an important role in signal transduction. Alternative splicing of this gene results in multiple transcript variants. [provided by RefSeq, Jul 2008]

Synonyms:

cPLA2; ESA1; HTATIP; HTATIP1; NEDFASB; PLIP; TIP; TIP60; ZC2HC5

Protein Families:

Druggable Genome, Transcription Factors

Product images:

Western blot analysis of extracts (35ug) from cell lines and/or tissue lysates by using anti-KAT5 monoclonal antibody (1:500).