

Product datasheet for **CF812277**

MAP3K13 Mouse Monoclonal Antibody [Clone ID: OTI5A2]

Product data:

Product Type:	Primary Antibodies
Clone Name:	OTI5A2
Applications:	WB
Recommended Dilution:	WB 1:500
Reactivity:	Human, Mouse, Rat
Host:	Mouse
Isotype:	IgG1
Clonality:	Monoclonal
Immunogen:	Human recombinant protein fragment corresponding to amino acids 1-409 of human MAP3K13 (NP_004712) produced in E.coli.
Formulation:	Lyophilized powder (original buffer 1X PBS, pH 7.3, 8% trehalose)
Reconstitution Method:	For reconstitution, we recommend adding 100uL distilled water to a final antibody concentration of about 1 mg/mL. To use this carrier-free antibody for conjugation experiment, we strongly recommend performing another round of desalting process. (OriGene recommends Zeba Spin Desalting Columns, 7KMWCO from Thermo Scientific)
Purification:	Purified from mouse ascites fluids or tissue culture supernatant by affinity chromatography (protein A/G)
Conjugation:	Unconjugated
Storage:	Store at -20°C as received.
Stability:	Stable for 12 months from date of receipt.
Predicted Protein Size:	108.1 kDa
Gene Name:	mitogen-activated protein kinase kinase kinase 13
Database Link:	NP_004712 Entrez Gene 71751 Mouse Entrez Gene 303823 Rat Entrez Gene 9175 Human O43283



[View online »](#)

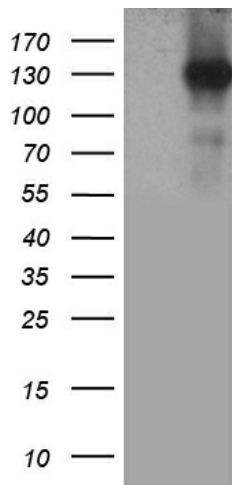
Background: The protein encoded by this gene is a member of serine/threonine protein kinase family. This kinase contains a dual leucine-zipper motif, and has been shown to form dimers/oligomers through its leucine-zipper motif. This kinase can phosphorylate and activate MAPK8/JNK, MAP2K7/MKK7, which suggests a role in the JNK signaling pathway. [provided by RefSeq, Jul 2008]

Synonyms: LZK; MEKK13; MLK

Protein Families: Druggable Genome, Protein Kinase, Transcription Factors

Protein Pathways: MAPK signaling pathway

Product images:



HEK293T cells were transfected with the pCMV6-ENTRY control (Left lane) or pCMV6-ENTRY MAP3K13 ([RC220337], Right lane) cDNA for 48 hrs and lysed. Equivalent amounts of cell lysates (5 ug per lane) were separated by SDS-PAGE and immunoblotted with anti-MAP3. Positive lysates [LY417791] (100ug) and [LC417791] (20ug) can be purchased separately from OriGene.