

Product datasheet for **CF812243**

B7-1 (CD80) Mouse Monoclonal Antibody [Clone ID: OT11G9]

Product data:

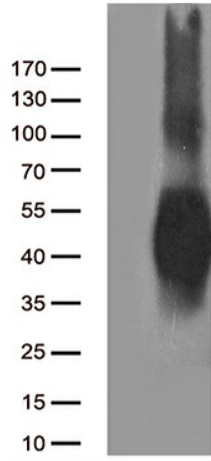
| | |
|-------------------------------|--|
| Product Type: | Primary Antibodies |
| Clone Name: | OT11G9 |
| Applications: | ELISA, FC, LMNX, WB |
| Recommended Dilution: | WB 1:500, FLOW 1:100 |
| Reactivity: | Human |
| Host: | Mouse |
| Isotype: | IgG2b |
| Clonality: | Monoclonal |
| Immunogen: | Full length human recombinant protein of human CD80 (NP_005182) produced in HEK293T cell. |
| Formulation: | Lyophilized powder (original buffer 1X PBS, pH 7.3, 8% trehalose) |
| Reconstitution Method: | For reconstitution, we recommend adding 100uL distilled water to a final antibody concentration of about 1 mg/mL. To use this carrier-free antibody for conjugation experiment, we strongly recommend performing another round of desalting process. (OriGene recommends Zeba Spin Desalting Columns, 7KMWCO from Thermo Scientific) |
| Purification: | Purified from mouse ascites fluids or tissue culture supernatant by affinity chromatography (protein A/G) |
| Conjugation: | Unconjugated |
| Storage: | Store at -20°C as received. |
| Stability: | Stable for 12 months from date of receipt. |
| Gene Name: | CD80 molecule |
| Database Link: | NP_005182 Entrez Gene 941 Human P33681 |
| Synonyms: | B7; B7-1; B7.1; BB1; CD28LG; CD28LG1; LAB7 |
| Protein Families: | Druggable Genome, Transcription Factors, Transmembrane |



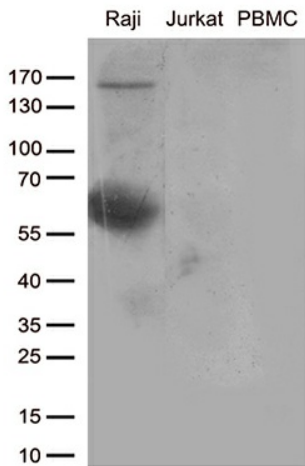
[View online »](#)

Protein Pathways:

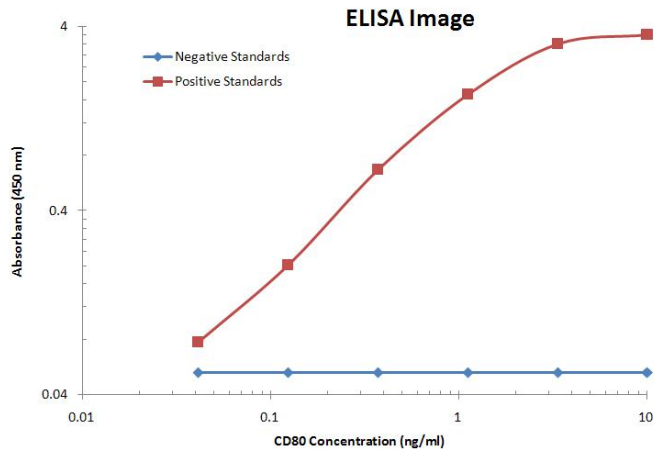
Allograft rejection, Autoimmune thyroid disease, Cell adhesion molecules (CAMs), Graft-versus-host disease, Systemic lupus erythematosus, Toll-like receptor signaling pathway, Type I diabetes mellitus, Viral myocarditis

Product images:


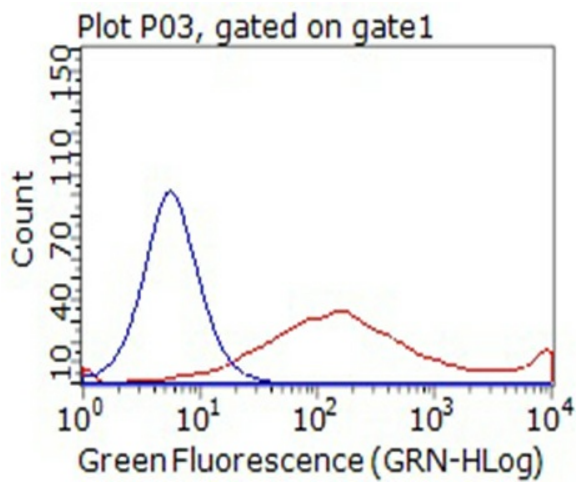
HEK293T cells were transfected with the pCMV6-ENTRY control (Left lane) or pCMV6-ENTRY CD80 ([RC206540], Right lane) cDNA for 48 hrs and lysed. Equivalent amounts of cell lysates (5 ug per lane) were separated by SDS-PAGE and immunoblotted with anti-CD80 (1:500).



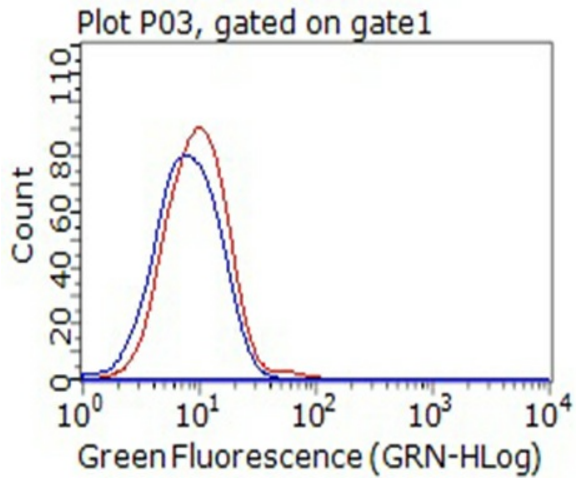
Western blot analysis of extracts (35ug) from cell lines and/or tissue lysates by using anti-CD80 monoclonal antibody (1:500).



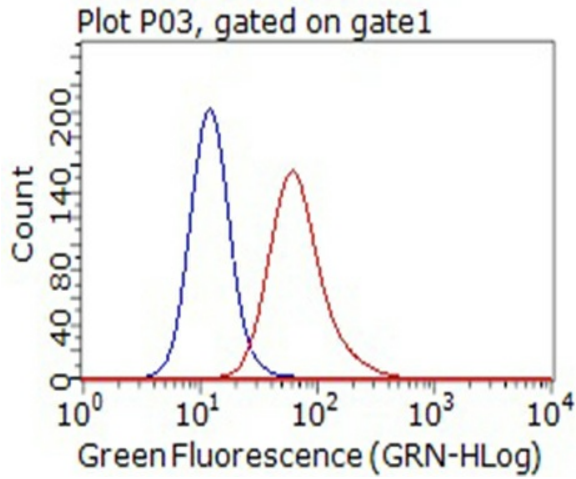
CD80 ELISA with 1G9 ([TA812243]) Capture and 11G5 ([TA812246]) Detection Antibodies. Substrate used: Recombinant Human CD80 ([TP700242])



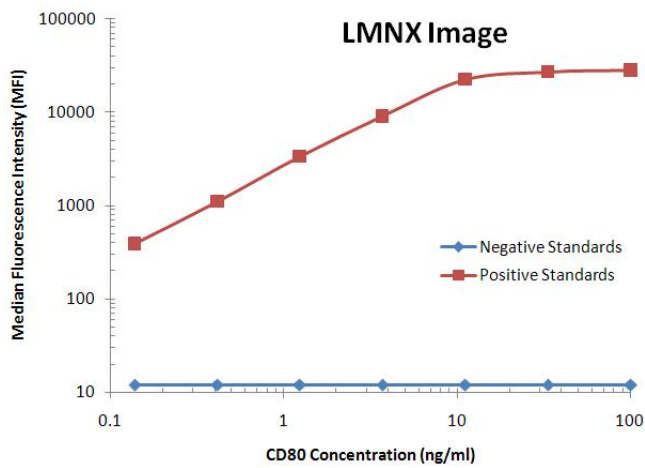
HEK293T cells transfected with either [RC206540] overexpress plasmid (Red) or IgG isotype control (Blue) were immunostained by anti-CD80 antibody ([TA812243]), and then analyzed by flow cytometry (1:100).



Flow cytometric Analysis of living Jurkat cells, using anti-CD80 antibody ([TA812243]), (Red), compared to an IgG isotype control, (Blue) (1:100).



Flow cytometric Analysis of living Raji cells, using anti-CD80 antibody ([TA812243]), (Red), compared to an IgG isotype control, (Blue) (1:100).



CD80 Luminex with 1G9 ([TA812243]) Capture and 11G5 ([TA812246]) Detection Antibodies. Substrate used: Recombinant Human CD80 ([TP700242])