

## Product datasheet for **CF812224**

### FUBP3 Mouse Monoclonal Antibody [Clone ID: OTI5H6]

#### Product data:

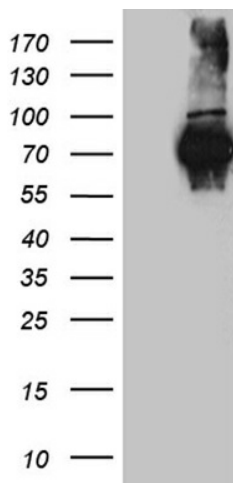
Product Type:	Primary Antibodies
Clone Name:	OTI5H6
Applications:	WB
Recommended Dilution:	WB 1:500
Reactivity:	Human, Mouse, Rat
Host:	Mouse
Isotype:	IgG1
Clonality:	Monoclonal
Immunogen:	Human recombinant protein fragment corresponding to amino acids 2-572 of human FUBP3 (NP_003925) produced in E.coli.
Formulation:	Lyophilized powder (original buffer 1X PBS, pH 7.3, 8% trehalose)
Reconstitution Method:	For reconstitution, we recommend adding 100uL distilled water to a final antibody concentration of about 1 mg/mL. To use this carrier-free antibody for conjugation experiment, we strongly recommend performing another round of desalting process. (OriGene recommends Zeba Spin Desalting Columns, 7KMWCO from Thermo Scientific)
Purification:	Purified from mouse ascites fluids or tissue culture supernatant by affinity chromatography (protein A/G)
Conjugation:	Unconjugated
Storage:	Store at -20°C as received.
Stability:	Stable for 12 months from date of receipt.
Predicted Protein Size:	61.5 kDa
Gene Name:	far upstream element binding protein 3
Database Link:	<a href="#">NP_003925</a> <a href="#">Entrez Gene 320267</a> <a href="#">MouseEntrez Gene 362106</a> <a href="#">RatEntrez Gene 8939</a> <a href="#">Human Q96I24</a>
Background:	May interact with single-stranded DNA from the far-upstream element (FUSE). May activate gene expression. [UniProtKB/Swiss-Prot Function]



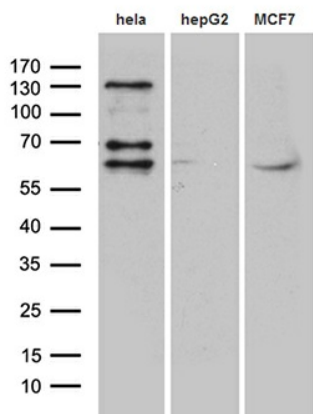
[View online »](#)

Synonyms: FBP3

**Product images:**



HEK293T cells were transfected with the pCMV6-ENTRY control (Left lane) or pCMV6-ENTRY FUBP3 ([RC215402], Right lane) cDNA for 48 hrs and lysed. Equivalent amounts of cell lysates (5 ug per lane) were separated by SDS-PAGE and immunoblotted with anti-FUBP3. Positive lysates [LY418344] (100ug) and [LC418344] (20ug) can be purchased separately from OriGene.



Western blot analysis of extracts (35ug) from 3 cell lines by using anti-FUBP3 monoclonal antibody (1:500).