

Product datasheet for **CF812220**

CASKIN2 Mouse Monoclonal Antibody [Clone ID: OTI8G3]

Product data:

Product Type:	Primary Antibodies
Clone Name:	OTI8G3
Applications:	WB
Recommended Dilution:	WB 1:2000
Reactivity:	Human, Mouse, Rat
Host:	Mouse
Isotype:	IgG2b
Clonality:	Monoclonal
Immunogen:	Human recombinant protein fragment corresponding to amino acids 147-552 of human CASKIN2 (NP_065804) produced in E.coli.
Formulation:	Lyophilized powder (original buffer 1X PBS, pH 7.3, 8% trehalose)
Reconstitution Method:	For reconstitution, we recommend adding 100uL distilled water to a final antibody concentration of about 1 mg/mL. To use this carrier-free antibody for conjugation experiment, we strongly recommend performing another round of desalting process. (OriGene recommends Zeba Spin Desalting Columns, 7KMWCO from Thermo Scientific)
Purification:	Purified from mouse ascites fluids or tissue culture supernatant by affinity chromatography (protein A/G)
Conjugation:	Unconjugated
Storage:	Store at -20°C as received.
Stability:	Stable for 12 months from date of receipt.
Gene Name:	CASK interacting protein 2
Database Link:	NP_065804 Entrez Gene 57513 Human Q8WXEQ



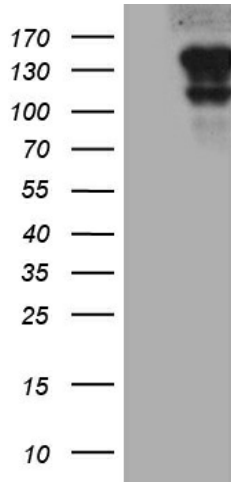
[View online »](#)

Background:

This gene encodes a large protein that contains six ankyrin repeats, as well as a Src homology 3 (SH3) domain and two sterile alpha motif (SAM) domains, which may be involved in protein-protein interactions. The C-terminal portion of this protein is proline-rich and contains a conserved region. A related protein interacts with calcium/calmodulin-dependent serine protein kinase (CASK). Alternative splicing results in multiple transcript variants. [provided by RefSeq, Mar 2013]

Synonyms:

ANKS5B

Product images:

HEK293T cells were transfected with the pCMV6-ENTRY control (Cat# [PS100001], Left lane) or pCMV6-ENTRY CASKIN2 (Cat# [RC227932], Right lane) cDNA for 48 hrs and lysed. Equivalent amounts of cell lysates (5 ug per lane) were separated by SDS-PAGE and immunoblotted with anti-CASKIN2 (Cat# [TA812220])(1:2000).