

## Product datasheet for **CF812205**

### TRF1 (TERF1) Mouse Monoclonal Antibody [Clone ID: OTI3A1]

#### Product data:

Product Type:	Primary Antibodies
Clone Name:	OTI3A1
Applications:	WB
Recommended Dilution:	WB 1:2000
Reactivity:	Human
Host:	Mouse
Isotype:	IgG2a
Clonality:	Monoclonal
Immunogen:	Full length human recombinant protein of human TERF1 (NP_003209) produced in HEK293T cell.
Formulation:	Lyophilized powder (original buffer 1X PBS, pH 7.3, 8% trehalose)
Reconstitution Method:	For reconstitution, we recommend adding 100uL distilled water to a final antibody concentration of about 1 mg/mL. To use this carrier-free antibody for conjugation experiment, we strongly recommend performing another round of desalting process. (OriGene recommends Zeba Spin Desalting Columns, 7KMWCO from Thermo Scientific)
Purification:	Purified from mouse ascites fluids or tissue culture supernatant by affinity chromatography (protein A/G)
Conjugation:	Unconjugated
Storage:	Store at -20°C as received.
Stability:	Stable for 12 months from date of receipt.
Predicted Protein Size:	48.1 kDa
Gene Name:	telomeric repeat binding factor 1
Database Link:	<a href="#">NP_003209</a> <a href="#">Entrez Gene 7013 Human</a> <a href="#">P54274</a>



[View online »](#)

**Background:**

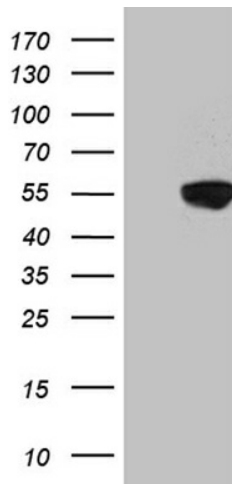
This gene encodes a telomere specific protein which is a component of the telomere nucleoprotein complex. This protein is present at telomeres throughout the cell cycle and functions as an inhibitor of telomerase, acting in cis to limit the elongation of individual chromosome ends. The protein structure contains a C-terminal Myb motif, a dimerization domain near its N-terminus and an acidic N-terminus. Two transcripts of this gene are alternatively spliced products. [provided by RefSeq, Jul 2008]

**Synonyms:**

hTRF1-AS; PIN2; t-TRF1; TRBF1; TRF; TRF1

**Protein Families:**

Transcription Factors

**Product images:**

HEK293T cells were transfected with the pCMV6-ENTRY control (Cat# [PS100001], Left lane) or pCMV6-ENTRY TERF1 (Cat# [RC205904], Right lane) cDNA for 48 hrs and lysed. Equivalent amounts of cell lysates (5 ug per lane) were separated by SDS-PAGE and immunoblotted with anti-TRF1 (Cat# [TA812205]). Positive lysates [LY418833] (100ug) and [LC418833] (20ug) can be purchased separately from OriGene.