

Product datasheet for **CF811991**

MTX2 Mouse Monoclonal Antibody [Clone ID: OTI2E9]

Product data:

Product Type:	Primary Antibodies
Clone Name:	OTI2E9
Applications:	IHC
Recommended Dilution:	IHC 1:500
Reactivity:	Human, Mouse, Rat
Host:	Mouse
Isotype:	IgG2a
Clonality:	Monoclonal
Immunogen:	Full length human recombinant protein of human MTX2 (NP_001006636) produced in E.coli.
Formulation:	Lyophilized powder (original buffer 1X PBS, pH 7.3, 8% trehalose)
Reconstitution Method:	For reconstitution, we recommend adding 100uL distilled water to a final antibody concentration of about 1 mg/mL. To use this carrier-free antibody for conjugation experiment, we strongly recommend performing another round of desalting process. (OriGene recommends Zeba Spin Desalting Columns, 7KMWCO from Thermo Scientific)
Purification:	Purified from mouse ascites fluids or tissue culture supernatant by affinity chromatography (protein A/G)
Conjugation:	Unconjugated
Storage:	Store at -20°C as received.
Stability:	Stable for 12 months from date of receipt.
Predicted Protein Size:	28.6 kDa
Gene Name:	metaxin 2
Database Link:	NP_001006636 Entrez Gene 53375 Mouse Entrez Gene 288150 Rat Entrez Gene 10651 Human O75431



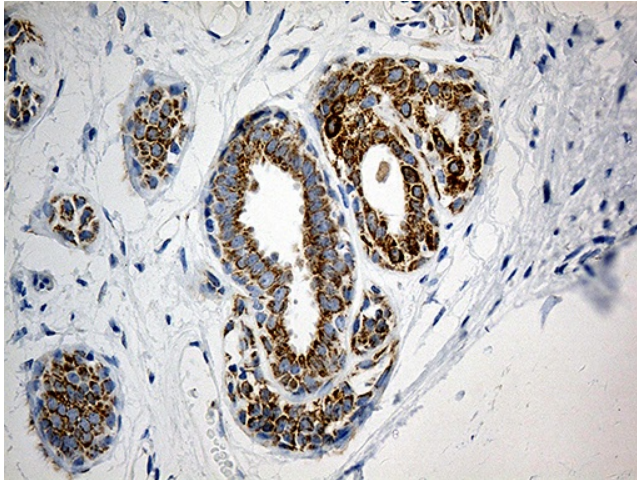
[View online »](#)

Background:

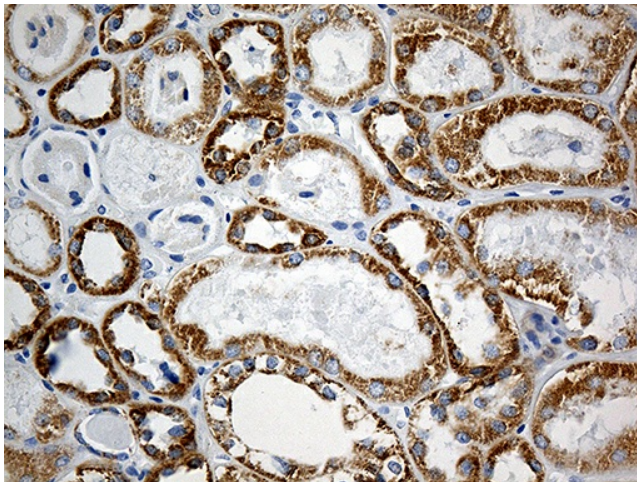
The protein encoded by this gene is highly similar to the metaxin 2 protein from mouse, which has been shown to interact with the mitochondrial membrane protein metaxin 1. Because of this similarity, it is thought that the encoded protein is peripherally associated with the cytosolic face of the outer mitochondrial membrane, and that it is involved in the import of proteins into the mitochondrion. Alternative splicing results in multiple transcript variants. A related pseudogene has been identified on chromosome 7. [provided by RefSeq, Jun 2009]

Synonyms:

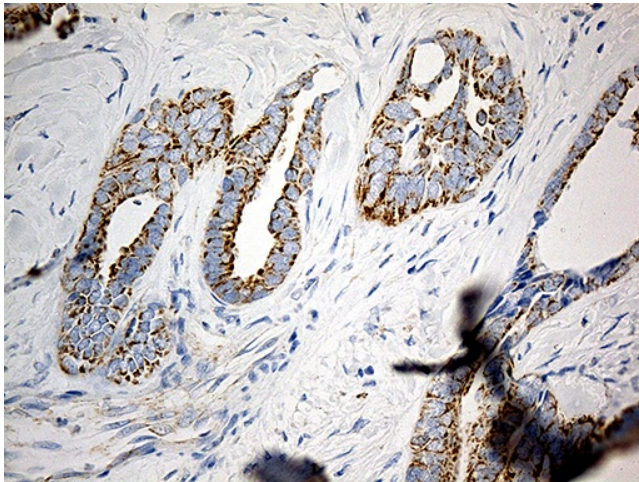
metaxin 2; MGC111067

Product images:

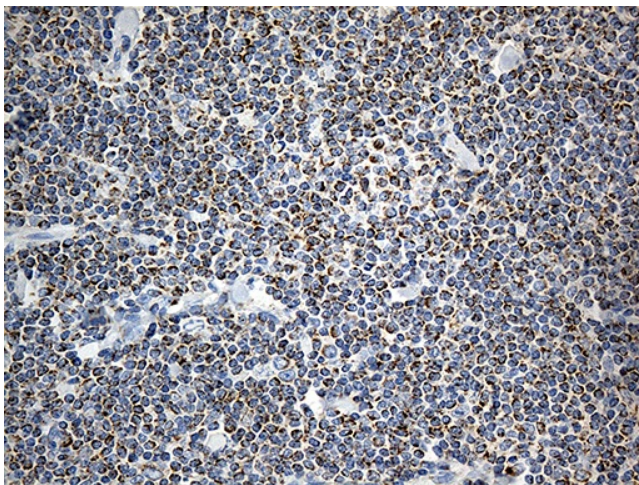
Immunohistochemical staining of paraffin-embedded Human breast tissue within the normal limits using anti-MTX2 mouse monoclonal antibody. (Heat-induced epitope retrieval by 1mM EDTA in 10mM Tris buffer (pH8.5) at 120°C for 3min, [TA811991]) (1:500)



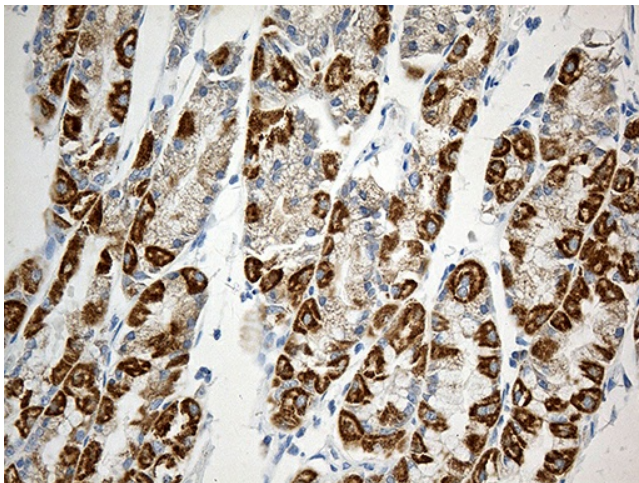
Immunohistochemical staining of paraffin-embedded Human Kidney tissue within the normal limits using anti-MTX2 mouse monoclonal antibody. (Heat-induced epitope retrieval by 1mM EDTA in 10mM Tris buffer (pH8.5) at 120°C for 3min, [TA811991]) (1:500)



Immunohistochemical staining of paraffin-embedded Adenocarcinoma of Human ovary tissue using anti-MTX2 mouse monoclonal antibody. (Heat-induced epitope retrieval by 1mM EDTA in 10mM Tris buffer (pH8.5) at 120°C for 3min, [TA811991]) (1:500)



Immunohistochemical staining of paraffin-embedded Human lymphoma tissue using anti-MTX2 mouse monoclonal antibody. (Heat-induced epitope retrieval by 1mM EDTA in 10mM Tris buffer (pH8.5) at 120°C for 3min, [TA811991]) (1:500)



Immunohistochemical staining of paraffin-embedded Human gastric tissue within the normal limits using anti-MTX2 mouse monoclonal antibody. (Heat-induced epitope retrieval by 1mM EDTA in 10mM Tris buffer (pH8.5) at 120°C for 3min, [TA811991]) (1:500)