

Product datasheet for **CF811974**

LAMP1 Mouse Monoclonal Antibody [Clone ID: OT11C5]

Product data:

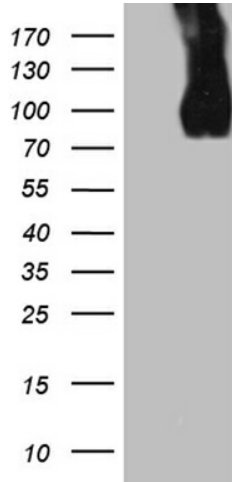
Product Type:	Primary Antibodies
Clone Name:	OT11C5
Applications:	FC, WB
Recommended Dilution:	WB 1:500, FLOW 1:25~100
Reactivity:	Human
Host:	Mouse
Isotype:	IgG1
Clonality:	Monoclonal
Immunogen:	Human recombinant protein fragment corresponding to amino acids 29-382 of human LAMP1 (NP_005552) produced in HEK293T cell.
Formulation:	Lyophilized powder (original buffer 1X PBS, pH 7.3, 8% trehalose)
Reconstitution Method:	For reconstitution, we recommend adding 100uL distilled water to a final antibody concentration of about 1 mg/mL. To use this carrier-free antibody for conjugation experiment, we strongly recommend performing another round of desalting process. (OriGene recommends Zeba Spin Desalting Columns, 7KMWCO from Thermo Scientific)
Purification:	Purified from mouse ascites fluids or tissue culture supernatant by affinity chromatography (protein A/G)
Conjugation:	Unconjugated
Storage:	Store at -20°C as received.
Stability:	Stable for 12 months from date of receipt.
Predicted Protein Size:	44.88 kDa
Gene Name:	lysosomal associated membrane protein 1
Database Link:	NP_005552 Entrez Gene 3916 Human P11279
Background:	The protein encoded by this gene is a member of a family of membrane glycoproteins. This glycoprotein provides selectins with carbohydrate ligands. It may also play a role in tumor cell metastasis. [provided by RefSeq, Jul 2008]



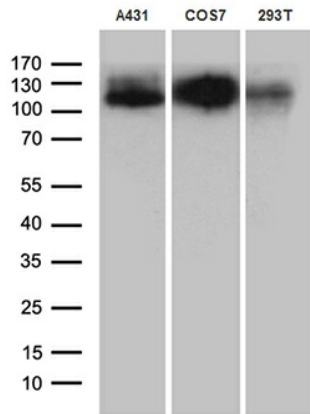
[View online »](#)

Synonyms: CD107a; LAMPA; LGP120
Protein Families: ES Cell Differentiation/IPS, Transmembrane
Protein Pathways: Lysosome

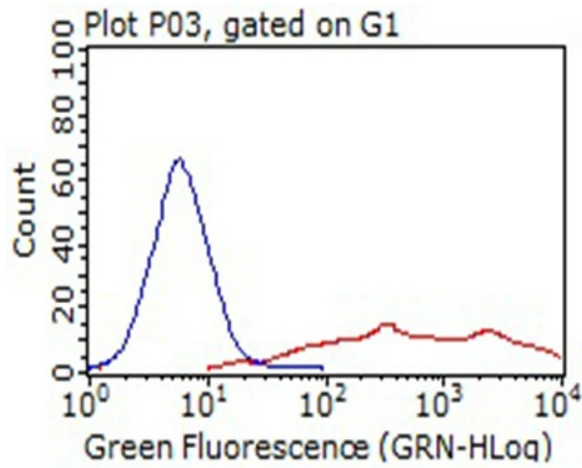
Product images:



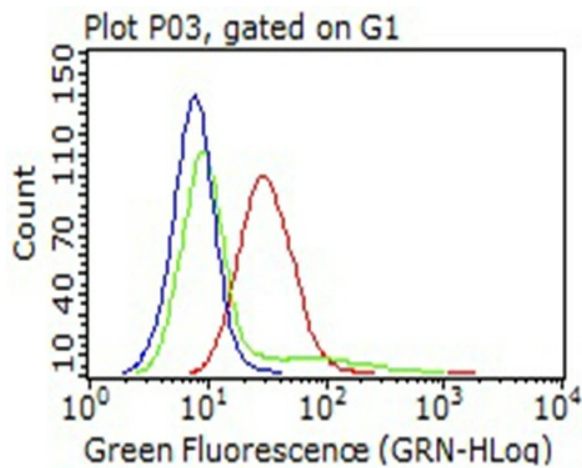
HEK293T cells were transfected with the pCMV6-ENTRY control (Left lane) or pCMV6-ENTRY LAMP1 ([RC219208], Right lane) cDNA for 48 hrs and lysed. Equivalent amounts of cell lysates (5 ug per lane) were separated by SDS-PAGE and immunoblotted with anti-LAMP1 ([TA811974]). Positive lysates [LY417223] (100ug) and [LC417223] (20ug) can be purchased separately from OriGene.



Western blot analysis of extracts (35ug) from 3 cell lines by using anti-LAMP1 monoclonal antibody (1:500).



HEK293T cells transfected with either [RC219208] overexpress plasmid (Red) or empty vector control plasmid (Blue) were immunostained by anti-LAMP1 antibody ([TA811974]), and then analyzed by flow cytometry (1:100).



Flow cytometric Analysis of living A431 cells, using anti-LAMP1 antibody ([TA811974]), (Red), compared to an IgG isotype control, (green), and negative control (PBS), (Blue). (1:100) (1:25)