

Product datasheet for **CF811961**

GIPC (GIPC1) Mouse Monoclonal Antibody [Clone ID: OTI5C10]

Product data:

Product Type:	Primary Antibodies
Clone Name:	OTI5C10
Applications:	IHC, WB
Recommended Dilution:	WB 1:500~2000, IHC 1:500
Reactivity:	Human, Mouse, Rat
Host:	Mouse
Isotype:	IgG2a
Clonality:	Monoclonal
Immunogen:	Full length human recombinant protein of human GIPC1 (NP_974199) produced in E.coli.
Formulation:	Lyophilized powder (original buffer 1X PBS, pH 7.3, 8% trehalose)
Reconstitution Method:	For reconstitution, we recommend adding 100uL distilled water to a final antibody concentration of about 1 mg/mL. To use this carrier-free antibody for conjugation experiment, we strongly recommend performing another round of desalting process. (OriGene recommends Zeba Spin Desalting Columns, 7KMWCO from Thermo Scientific)
Purification:	Purified from mouse ascites fluids or tissue culture supernatant by affinity chromatography (protein A/G)
Conjugation:	Unconjugated
Storage:	Store at -20°C as received.
Stability:	Stable for 12 months from date of receipt.
Predicted Protein Size:	35.9 kDa
Gene Name:	GIPC PDZ domain containing family member 1
Database Link:	NP_974199 Entrez Gene 67903 MouseEntrez Gene 83823 RatEntrez Gene 10755 Human O14908
Background:	GIPC1 is a scaffolding protein that regulates cell surface receptor expression and trafficking (Lee et al., 2008 [PubMed 18775991]). [supplied by OMIM, Apr 2009]

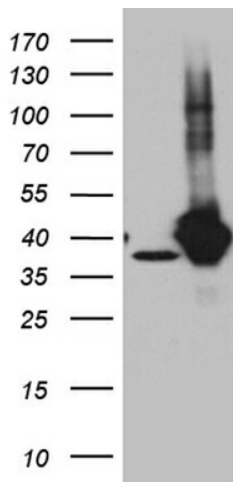


[View online »](#)

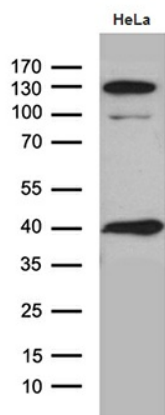
Synonyms: C19orf3; GIPC; GLUT1CBP; Hs.6454; IIP-1; NIP; RGS19IP1; SEMCAP; SYNECTIIN; SYNECTIN; TIP-2

Protein Families: Druggable Genome

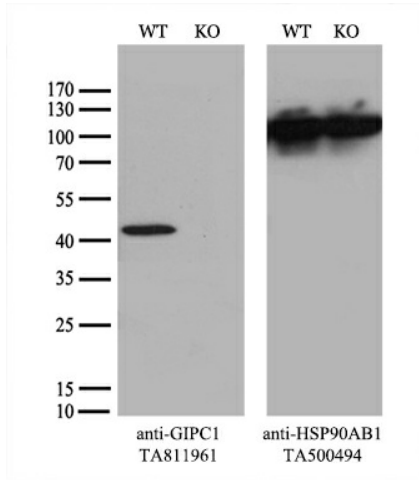
Product images:



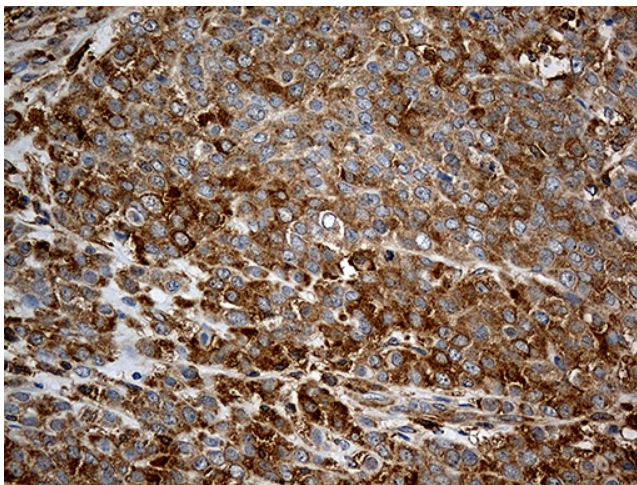
HEK293T cells were transfected with the pCMV6-ENTRY control (Left lane) or pCMV6-ENTRY GIPC1 [RC201175], Right lane) cDNA for 48 hrs and lysed. Equivalent amounts of cell lysates (5 ug per lane) were separated by SDS-PAGE and immunoblotted with anti-GIPC1. Positive lysates [LY404363] (100ug) and [LC404363] (20ug) can be purchased separately from OriGene.



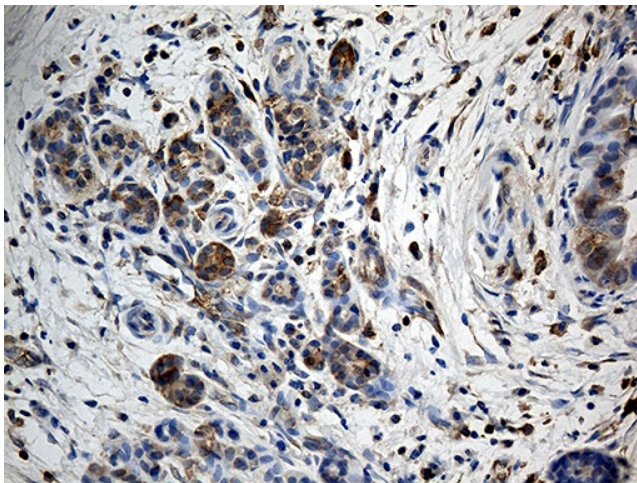
Western blot analysis of extracts (35ug) from Hela cell line by using anti-GIPC1 monoclonal antibody (1:500).



Equivalent amounts of cell lysates (10 ug per lane) of wild-type 293T cells (WT, Cat# LC810293T) and GIPC1-Knockout 293T cells (KO, Cat# [LC811884]) were separated by SDS-PAGE and immunoblotted with anti-GIPC1 monoclonal antibody [TA811961] (1:500^o). Then the blotted membrane was stripped and reprobed with anti-HSP90 antibody as a loading control.



Immunohistochemical staining of paraffin-embedded Adenocarcinoma of Human breast tissue using anti-GIPC1 mouse monoclonal antibody. (Heat-induced epitope retrieval by 1mM EDTA in 10mM Tris buffer (pH8.5) at 120°C for 3min, [TA811961]) (1:500)



Immunohistochemical staining of paraffin-embedded Carcinoma of Human pancreas tissue using anti-GIPC1 mouse monoclonal antibody. (Heat-induced epitope retrieval by 1mM EDTA in 10mM Tris buffer (pH8.5) at 120°C for 3min, [TA811961]) (1:500)