

## Product datasheet for **CF811916**

### **KAL1 (ANOS1) Mouse Monoclonal Antibody [Clone ID: OTI4B8]**

#### **Product data:**

Product Type:	Primary Antibodies
Clone Name:	OTI4B8
Applications:	WB
Recommended Dilution:	WB 1:500
Reactivity:	Human
Host:	Mouse
Isotype:	IgG2b
Clonality:	Monoclonal
Immunogen:	Human recombinant protein fragment corresponding to amino acids 129-373 of human KAL1(NP_000207) produced in E.coli.
Formulation:	Lyophilized powder (original buffer 1X PBS, pH 7.3, 8% trehalose)
Reconstitution Method:	For reconstitution, we recommend adding 100uL distilled water to a final antibody concentration of about 1 mg/mL. To use this carrier-free antibody for conjugation experiment, we strongly recommend performing another round of desalting process. (OriGene recommends Zeba Spin Desalting Columns, 7KMWCO from Thermo Scientific)
Purification:	Purified from mouse ascites fluids or tissue culture supernatant by affinity chromatography (protein A/G)
Conjugation:	Unconjugated
Storage:	Store at -20°C as received.
Stability:	Stable for 12 months from date of receipt.
Predicted Protein Size:	76.11 kDa
Gene Name:	anosmin 1
Database Link:	<a href="#">NP_000207</a> <a href="#">Entrez Gene 3730 Human</a> <a href="#">P23352</a>



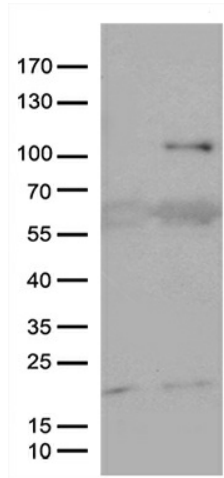
[View online »](#)

**Background:**

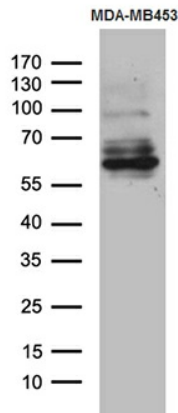
Mutations in this gene cause the X-linked Kallmann syndrome. The encoded protein is similar in sequence to proteins known to function in neural cell adhesion and axonal migration. In addition, this cell surface protein is N-glycosylated and may have anti-protease activity. [provided by RefSeq, Jul 2008]

**Synonyms:**

ADMLX; HH1; HHA; KAL; KAL1; KALIG-1; KMS; WFDC19

**Product images:**


HEK293T cells were transfected with the pCMV6-ENTRY control (Cat# [PS100001], Left lane) or pCMV6-ENTRY KAL1 (Cat# [RC212305], Right lane) cDNA for 48 hrs and lysed. Equivalent amounts of cell lysates (5 ug per lane) were separated by SDS-PAGE and immunoblotted with anti-KAL1 (Cat# [TA811916]). Positive lysates [LY400084] (100ug) and [LC400084] (20ug) can be purchased separately from OriGene.



Western blot analysis of extracts (35ug) from MDA-MB453 cell line by using anti-KAL1 monoclonal antibody (1:500).