

## Product datasheet for **CF811910**

### Interferon alpha 2 (IFNA2) Mouse Monoclonal Antibody [Clone ID: OTI12C7]

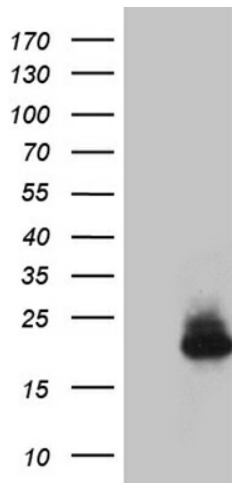
#### Product data:

|                         |  |
|-------------------------|--|
| Product Type:           | Primary Antibodies   |
| Clone Name:             | OTI12C7  |
| Applications:           | WB   |
| Recommended Dilution:   | WB 1:2000  |
| Reactivity:             | Human  |
| Host:                   | Mouse  |
| Isotype:                | IgG1   |
| Clonality:              | Monoclonal   |
| Immunogen:              | Human recombinant protein fragment corresponding to amino acids 24-188 of human IFNA2 (NP_000596) produced in E.coli.  |
| Formulation:            | Lyophilized powder (original buffer 1X PBS, pH 7.3, 8% trehalose)  |
| Reconstitution Method:  | For reconstitution, we recommend adding 100uL distilled water to a final antibody concentration of about 1 mg/mL. To use this carrier-free antibody for conjugation experiment, we strongly recommend performing another round of desalting process. (OriGene recommends Zeba Spin Desalting Columns, 7KMWCO from Thermo Scientific) |
| Purification:           | Purified from mouse ascites fluids or tissue culture supernatant by affinity chromatography (protein A/G)  |
| Conjugation:            | Unconjugated   |
| Storage:                | Store at -20°C as received.  |
| Stability:              | Stable for 12 months from date of receipt.   |
| Predicted Protein Size: | 21.4 kDa   |
| Gene Name:              | interferon alpha 2   |
| Database Link:          | <a href="#">NP_000596</a><br><a href="#">Entrez Gene 3440 Human P01563</a>   |



[View online »](#)

|                          |  |
|--------------------------|--|
| <b>Background:</b>       | This gene is a member of the alpha interferon gene cluster on chromosome 9. The encoded protein is a cytokine produced in response to viral infection. Use of the recombinant form of this protein has been shown to be effective in reducing the symptoms and duration of the common cold. [provided by RefSeq, Jun 2011] |
| <b>Synonyms:</b>         | IFN-alphaA; IFNA; IFNA2B; INFA2  |
| <b>Protein Families:</b> | Druggable Genome, Secreted Protein   |
| <b>Protein Pathways:</b> | Antigen processing and presentation, Autoimmune thyroid disease, Cytokine-cytokine receptor interaction, Cytosolic DNA-sensing pathway, Jak-STAT signaling pathway, Natural killer cell mediated cytotoxicity, Regulation of autophagy, RIG-I-like receptor signaling pathway, Toll-like receptor signaling pathway        |

**Product images:**

HEK293T cells were transfected with the pCMV6-ENTRY control (Cat# [PS100001], Left lane) or pCMV6-ENTRY IFNA2 (Cat# [RC221091], Right lane) cDNA for 48 hrs and lysed. Equivalent amounts of cell lysates (5 ug per lane) were separated by SDS-PAGE and immunoblotted with anti-IFNA2 (Cat# [TA811910]). Positive lysates [LY400201] (100ug) and [LC400201] (20ug) can be purchased separately from OriGene.