

## Product datasheet for **CF811868**

### **KLF5 Mouse Monoclonal Antibody [Clone ID: OTI6D2]**

#### **Product data:**

<b>Product Type:</b>	Primary Antibodies
<b>Clone Name:</b>	OTI6D2
<b>Applications:</b>	IHC, WB
<b>Recommended Dilution:</b>	WB 1:500~2000, IHC 1:5000
<b>Reactivity:</b>	Human, Mouse, Rat
<b>Host:</b>	Mouse
<b>Isotype:</b>	IgG1
<b>Clonality:</b>	Monoclonal
<b>Immunogen:</b>	Human recombinant protein fragment corresponding to amino acids 1 - 457 of human KLF5 (NP_001721) produced in E.coli.
<b>Formulation:</b>	Lyophilized powder (original buffer 1X PBS, pH 7.3, 8% trehalose)
<b>Reconstitution Method:</b>	For reconstitution, we recommend adding 100uL distilled water to a final antibody concentration of about 1 mg/mL. To use this carrier-free antibody for conjugation experiment, we strongly recommend performing another round of desalting process. (OriGene recommends Zeba Spin Desalting Columns, 7KMWCO from Thermo Scientific)
<b>Purification:</b>	Purified from mouse ascites fluids or tissue culture supernatant by affinity chromatography (protein A/G)
<b>Conjugation:</b>	Unconjugated
<b>Storage:</b>	Store at -20°C as received.
<b>Stability:</b>	Stable for 12 months from date of receipt.
<b>Predicted Protein Size:</b>	50.6 kDa
<b>Gene Name:</b>	Kruppel like factor 5
<b>Database Link:</b>	<a href="#">NP_001721</a> <a href="#">Entrez Gene 12224 Mouse</a> <a href="#">Entrez Gene 84410 Rat</a> <a href="#">Entrez Gene 688 Human</a> <a href="#">Q13887</a>



[View online »](#)

**Background:**

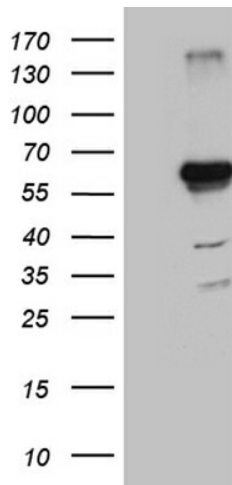
This gene encodes a member of the Kruppel-like factor subfamily of zinc finger proteins. The encoded protein is a transcriptional activator that binds directly to a specific recognition motif in the promoters of target genes. This protein acts downstream of multiple different signaling pathways and is regulated by post-translational modification. It may participate in both promoting and suppressing cell proliferation. Expression of this gene may be changed in a variety of different cancers and in cardiovascular disease. Alternative splicing results in multiple transcript variants. [provided by RefSeq, Nov 2013]

**Synonyms:**

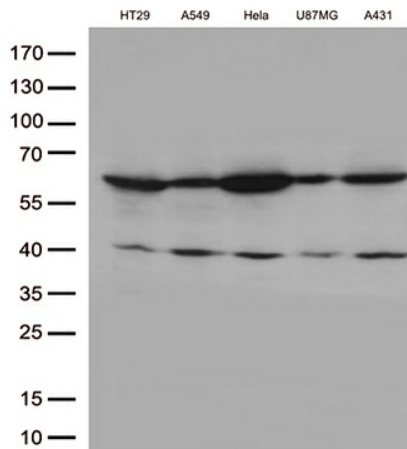
BTEB2; CKLF; IKLF

**Protein Families:**

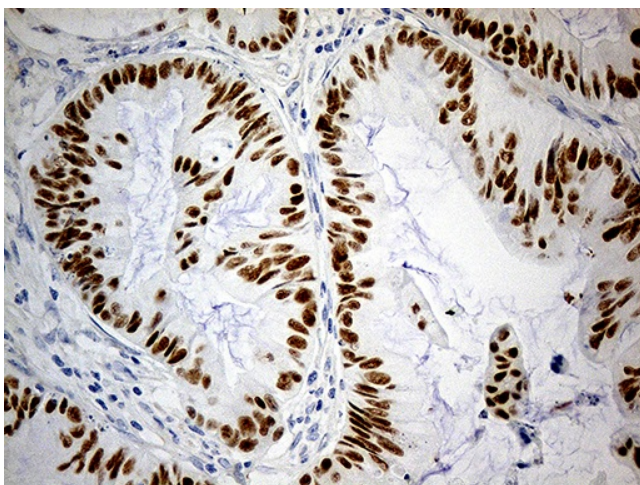
Embryonic stem cells, ES Cell Differentiation/IPS, Induced pluripotent stem cells, Transcription Factors

**Product images:**


HEK293T cells were transfected with the pCMV6-ENTRY control (Cat# [PS100001], Left lane) or pCMV6-ENTRY KLF5 (Cat# [RC202438], Right lane) cDNA for 48 hrs and lysed. Equivalent amounts of cell lysates (5 ug per lane) were separated by SDS-PAGE and immunoblotted with anti-KLF5 (Cat# [TA811868]). Positive lysates [LY419775] (100ug) and [LC419775] (20ug) can be purchased separately from OriGene.



Western blot analysis of extracts (35ug) from 5 cell lines lysates by using anti-KLF5 monoclonal antibody (1:500).



Immunohistochemical staining of paraffin-embedded Carcinoma of Human spleen tissue within the normal limits using anti-KLF5 mouse monoclonal antibody. (Heat-induced epitope retrieval by 1mM EDTA in 10mM Tris buffer (pH8.5) at 120°C for 3min, [TA811868]) (1:5000)