

## Product datasheet for **CF811858**

### MRC2 Mouse Monoclonal Antibody [Clone ID: OTI9G4]

#### Product data:

Product Type:	Primary Antibodies
Clone Name:	OTI9G4
Applications:	IHC, WB
Recommended Dilution:	WB 1:500~2000, IHC 1:5000
Reactivity:	Human, Mouse, Rat
Host:	Mouse
Isotype:	IgG2a
Clonality:	Monoclonal
Immunogen:	Full length human recombinant protein of human MRC2 (NP_006030) produced in HEK293T cell.
Formulation:	Lyophilized powder (original buffer 1X PBS, pH 7.3, 8% trehalose)
Reconstitution Method:	For reconstitution, we recommend adding 100uL distilled water to a final antibody concentration of about 1 mg/mL. To use this carrier-free antibody for conjugation experiment, we strongly recommend performing another round of desalting process. (OriGene recommends Zeba Spin Desalting Columns, 7KMWCO from Thermo Scientific)
Purification:	Purified from mouse ascites fluids or tissue culture supernatant by affinity chromatography (protein A/G)
Conjugation:	Unconjugated
Storage:	Store at -20°C as received.
Stability:	Stable for 12 months from date of receipt.
Predicted Protein Size:	166.5 kDa
Gene Name:	mannose receptor C type 2
Database Link:	<a href="#">NP_006030</a> <a href="#">Entrez Gene 17534 Mouse</a> <a href="#">Entrez Gene 498011 Rat</a> <a href="#">Entrez Gene 9902 Human</a> <a href="#">Q9UBG0</a>



[View online »](#)

**Background:**

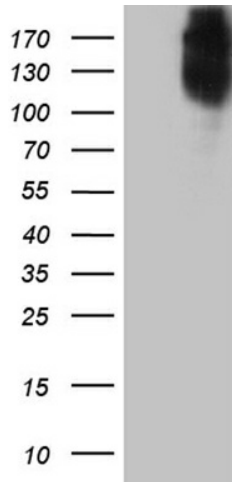
This gene encodes a member of the mannose receptor family of proteins that contain a fibronectin type II domain and multiple C-type lectin-like domains. The encoded protein plays a role in extracellular matrix remodeling by mediating the internalization and lysosomal degradation of collagen ligands. Expression of this gene may play a role in the tumorigenesis and metastasis of several malignancies including breast cancer, gliomas and metastatic bone disease. [provided by RefSeq, Feb 2012]

**Synonyms:**

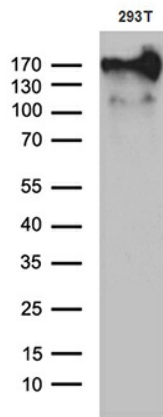
CD280; CLEC13E; ENDO180; UPARAP

**Protein Families:**

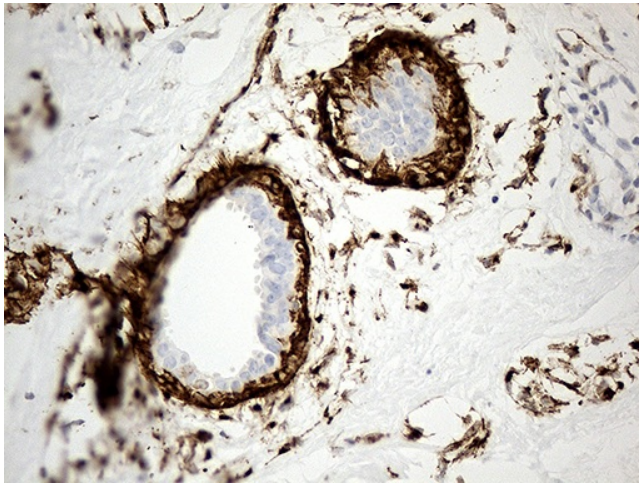
Druggable Genome, Transmembrane

**Product images:**


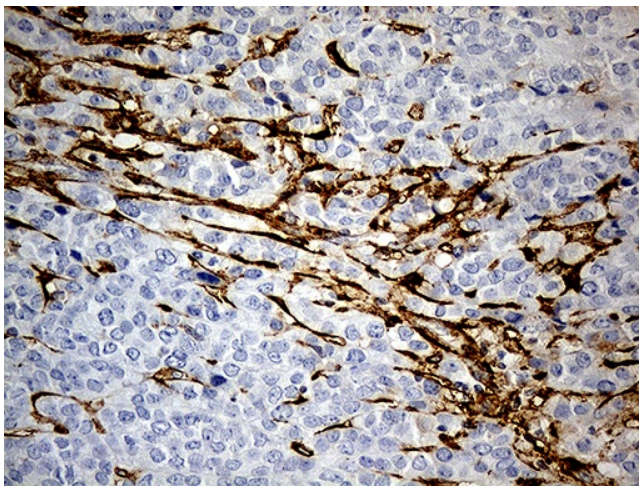
HEK293T cells were transfected with the pCMV6-ENTRY control (Cat# [PS100001], Left lane) or pCMV6-ENTRY MRC2 (Cat# [RC221360], Right lane) cDNA for 48 hrs and lysed. Equivalent amounts of cell lysates (5 ug per lane) were separated by SDS-PAGE and immunoblotted with anti-MRC2(Cat# [TA811858]). Positive lysates [LY416912] (100ug) and [LC416912] (20ug) can be purchased separately from OriGene.



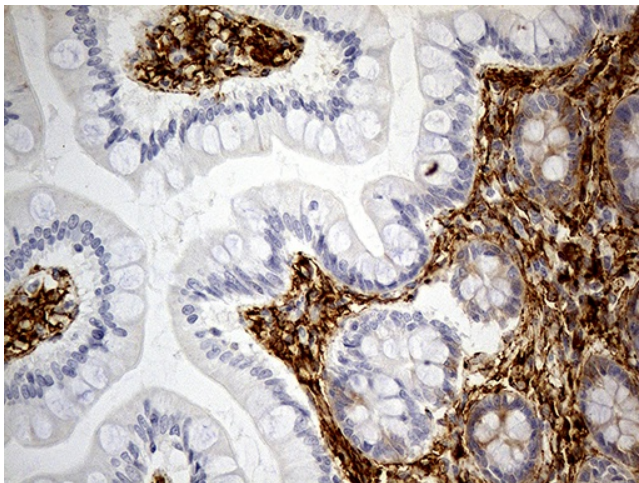
Western blot analysis of extracts (35ug) from 293T cell line by using anti-MRC2 monoclonal antibody (1:500).



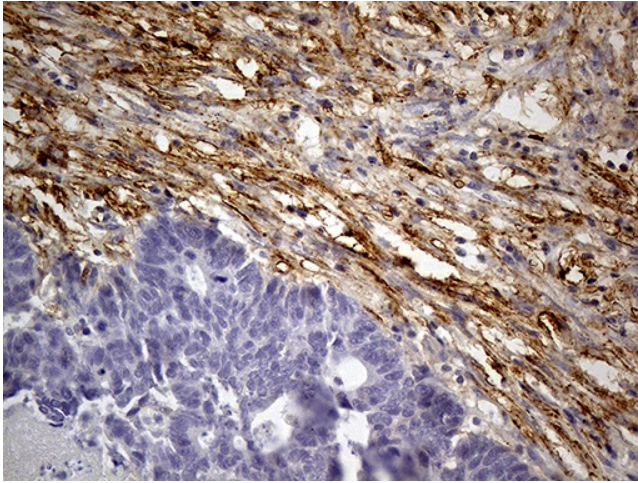
Immunohistochemical staining of paraffin-embedded Human breast tissue within the normal limits using anti-MRC2 mouse monoclonal antibody. (Heat-induced epitope retrieval by 1mM EDTA in 10mM Tris buffer (pH8.5) at 120°C for 3min, [TA811858]) (1:5000)



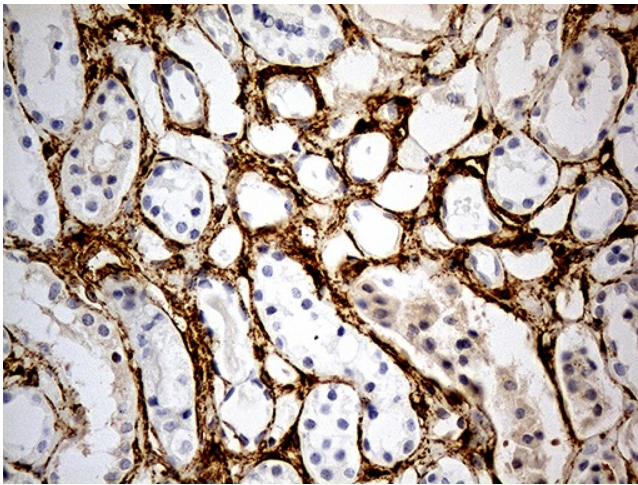
Immunohistochemical staining of paraffin-embedded Adenocarcinoma of Human breast tissue using anti-MRC2 mouse monoclonal antibody. (Heat-induced epitope retrieval by 1mM EDTA in 10mM Tris buffer (pH8.5) at 120°C for 3min, [TA811858]) (1:5000)



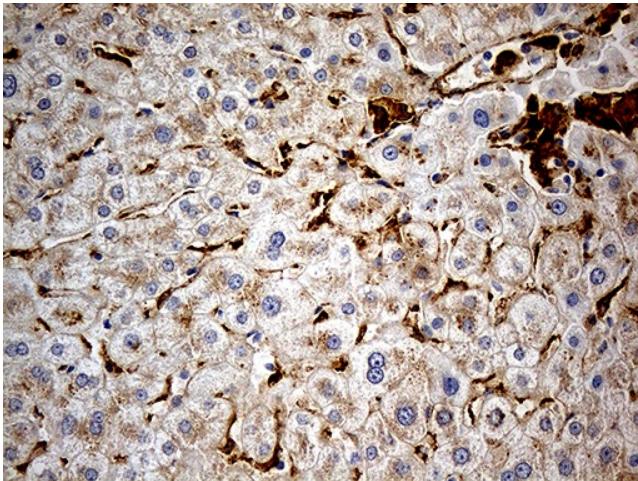
Immunohistochemical staining of paraffin-embedded Human colon tissue within the normal limits using anti-MRC2 mouse monoclonal antibody. (Heat-induced epitope retrieval by 1mM EDTA in 10mM Tris buffer (pH8.5) at 120°C for 3min, [TA811858]) (1:5000)



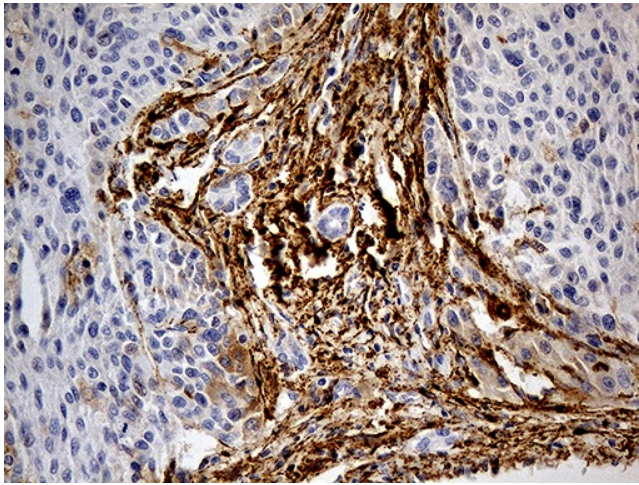
Immunohistochemical staining of paraffin-embedded Adenocarcinoma of Human colon tissue using anti-MRC2 mouse monoclonal antibody. (Heat-induced epitope retrieval by 1mM EDTA in 10mM Tris buffer (pH8.5) at 120°C for 3min, [TA811858]) (1:5000)



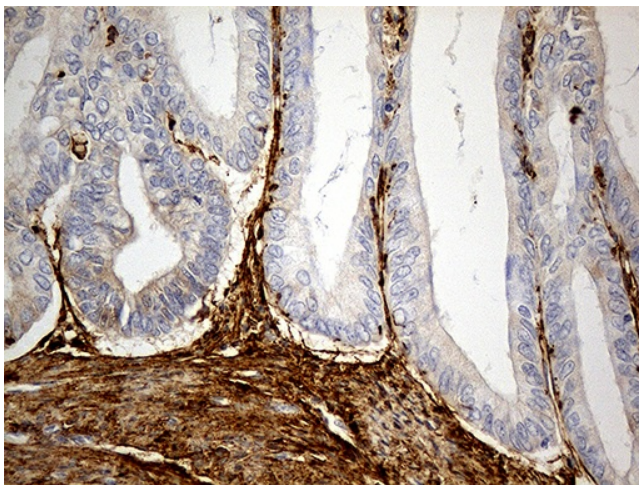
Immunohistochemical staining of paraffin-embedded Human Kidney tissue within the normal limits using anti-MRC2 mouse monoclonal antibody. (Heat-induced epitope retrieval by 1mM EDTA in 10mM Tris buffer (pH8.5) at 120°C for 3min, [TA811858]) (1:5000)



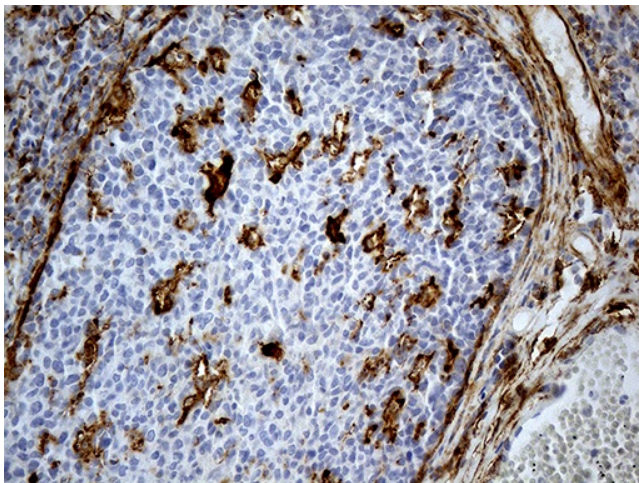
Immunohistochemical staining of paraffin-embedded Human liver tissue within the normal limits using anti-MRC2 mouse monoclonal antibody. (Heat-induced epitope retrieval by 1mM EDTA in 10mM Tris buffer (pH8.5) at 120°C for 3min, [TA811858]) (1:5000)



Immunohistochemical staining of paraffin-embedded Carcinoma of Human liver tissue using anti-MRC2 mouse monoclonal antibody. (Heat-induced epitope retrieval by 1mM EDTA in 10mM Tris buffer (pH8.5) at 120°C for 3min, [TA811858]) (1:5000)



Immunohistochemical staining of paraffin-embedded Adenocarcinoma of Human endometrium tissue using anti-MRC2 mouse monoclonal antibody. (Heat-induced epitope retrieval by 1mM EDTA in 10mM Tris buffer (pH8.5) at 120°C for 3min, [TA811858]) (1:5000)



Immunohistochemical staining of paraffin-embedded Human tonsil within the normal limits using anti-MRC2 mouse monoclonal antibody. (Heat-induced epitope retrieval by 1mM EDTA in 10mM Tris buffer (pH8.5) at 120°C for 3min, [TA811858]) (1:5000)