

## Product datasheet for **CF811816**

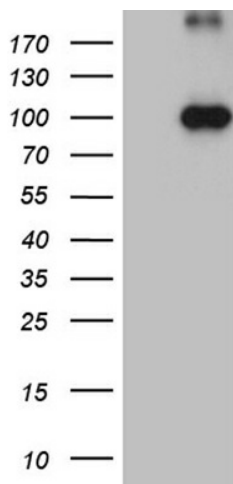
### **KIF6 Mouse Monoclonal Antibody [Clone ID: OTI5G2]**

#### **Product data:**

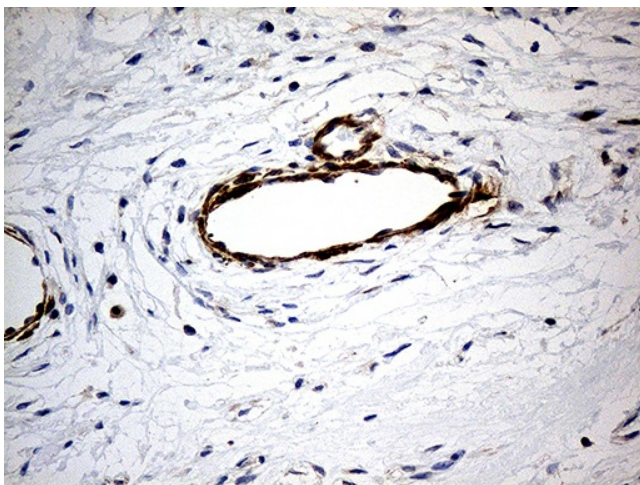
|                                |  |
|--------------------------------|--|
| <b>Product Type:</b>           | Primary Antibodies   |
| <b>Clone Name:</b>             | OTI5G2   |
| <b>Applications:</b>           | IHC, WB  |
| <b>Recommended Dilution:</b>   | WB 1:2000, IHC 1:500   |
| <b>Reactivity:</b>             | Human  |
| <b>Host:</b>                   | Mouse  |
| <b>Isotype:</b>                | IgG2a  |
| <b>Clonality:</b>              | Monoclonal   |
| <b>Immunogen:</b>              | Human recombinant protein fragment corresponding to amino acids 1-350 of human KIF6 (NP_659464) produced in E.coli.  |
| <b>Formulation:</b>            | Lyophilized powder (original buffer 1X PBS, pH 7.3, 8% trehalose)  |
| <b>Reconstitution Method:</b>  | For reconstitution, we recommend adding 100uL distilled water to a final antibody concentration of about 1 mg/mL. To use this carrier-free antibody for conjugation experiment, we strongly recommend performing another round of desalting process. (OriGene recommends Zeba Spin Desalting Columns, 7KMWCO from Thermo Scientific) |
| <b>Purification:</b>           | Purified from mouse ascites fluids or tissue culture supernatant by affinity chromatography (protein A/G)  |
| <b>Conjugation:</b>            | Unconjugated   |
| <b>Storage:</b>                | Store at -20°C as received.  |
| <b>Stability:</b>              | Stable for 12 months from date of receipt.   |
| <b>Predicted Protein Size:</b> | 92.4 kDa   |
| <b>Gene Name:</b>              | kinesin family member 6  |
| <b>Database Link:</b>          | <a href="#">NP_659464</a><br><a href="#">Entrez Gene 221458 Human</a><br><a href="#">Q6ZMV9</a>  |
| <b>Synonyms:</b>               | C6orf102; dj137F1.4; dj188D3.1; dj1043E3.1   |
| <b>Protein Families:</b>       | Druggable Genome   |



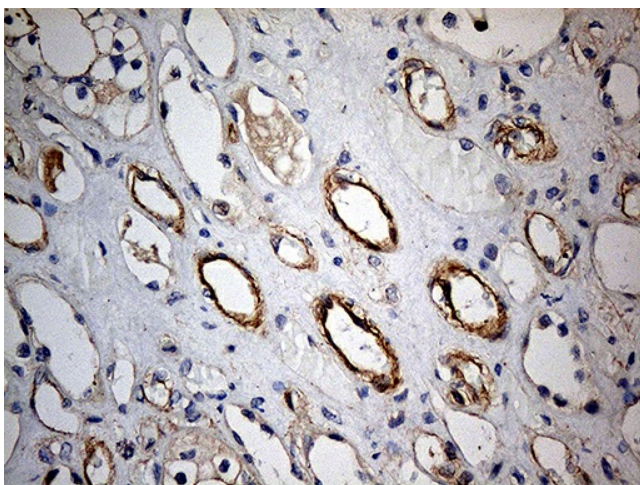
[View online »](#)

**Product images:**

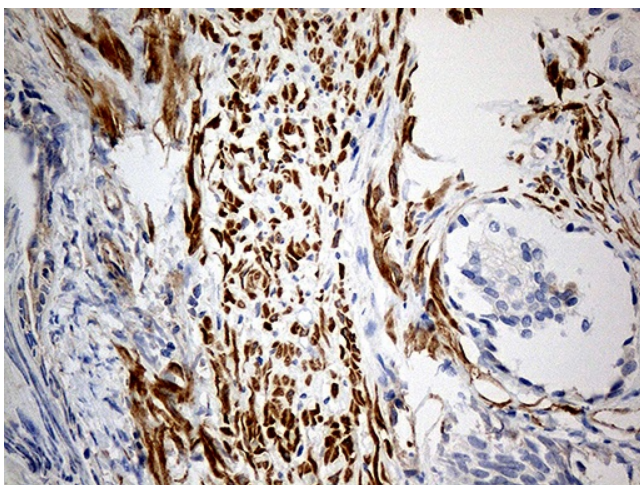
HEK293T cells were transfected with the pCMV6-ENTRY control (Cat# [PS100001], Left lane) or pCMV6-ENTRY KIF6 (Cat# [RC214978], Right lane) cDNA for 48 hrs and lysed. Equivalent amounts of cell lysates (5 ug per lane) were separated by SDS-PAGE and immunoblotted with anti-KIF6 (Cat# [TA811816])(1:2000). Positive lysates [LY408088] (100ug) and [LC408088] (20ug) can be purchased separately from OriGene.



Immunohistochemical staining of paraffin-embedded Human breast tissue within the normal limits using anti-KIF6 mouse monoclonal antibody. (Heat-induced epitope retrieval by 1mM EDTA in 10mM Tris buffer (pH8.5) at 120°C for 3min, [TA811816]) (1:500)



Immunohistochemical staining of paraffin-embedded Human Kidney tissue within the normal limits using anti-KIF6 mouse monoclonal antibody. (Heat-induced epitope retrieval by 1mM EDTA in 10mM Tris buffer (pH8.5) at 120°C for 3min, [TA811816]) (1:500)



Immunohistochemical staining of paraffin-embedded Human prostate tissue within the normal limits using anti-KIF6 mouse monoclonal antibody. (Heat-induced epitope retrieval by 1mM EDTA in 10mM Tris buffer (pH8.5) at 120°C for 3min, [TA811816]) (1:500)