

Product datasheet for **CF811808**

CHCHD10 Mouse Monoclonal Antibody [Clone ID: OTI3D7]

Product data:

Product Type:	Primary Antibodies
Clone Name:	OTI3D7
Applications:	WB
Recommended Dilution:	WB 1:500~2000
Reactivity:	Human, Mouse, Rat
Host:	Mouse
Isotype:	IgG1
Clonality:	Monoclonal
Immunogen:	Human recombinant protein fragment corresponding to amino acids 17-142 of human CHCHD10 (NP_998885) produced in E.coli.
Formulation:	Lyophilized powder (original buffer 1X PBS, pH 7.3, 8% trehalose)
Reconstitution Method:	For reconstitution, we recommend adding 100uL distilled water to a final antibody concentration of about 1 mg/mL. To use this carrier-free antibody for conjugation experiment, we strongly recommend performing another round of desalting process. (OriGene recommends Zeba Spin Desalting Columns, 7KMWCO from Thermo Scientific)
Purification:	Purified from mouse ascites fluids or tissue culture supernatant by affinity chromatography (protein A/G)
Conjugation:	Unconjugated
Storage:	Store at -20°C as received.
Stability:	Stable for 12 months from date of receipt.
Predicted Protein Size:	14 kDa
Gene Name:	coiled-coil-helix-coiled-coil-helix domain containing 10
Database Link:	NP_998885 Entrez Gene 400916 Human Q8WYQ3



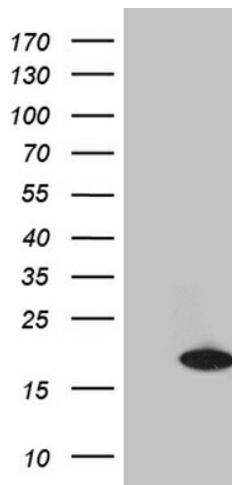
[View online »](#)

Background:

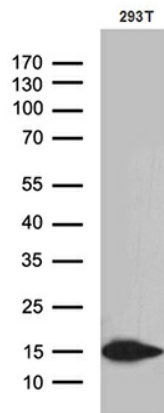
This gene encodes a mitochondrial protein that is enriched at cristae junctions in the intermembrane space. It may play a role in cristae morphology maintenance or oxidative phosphorylation. Mutations in this gene cause frontotemporal dementia and/or amyotrophic lateral sclerosis-2. Alternative splicing of this gene results in multiple transcript variants. Related pseudogenes have been identified on chromosomes 7 and 19. [provided by RefSeq, Aug 2014]

Synonyms:

C22orf16; FTDALS2; IMMD; N27C7-4; SMAJ

Product images:

HEK293T cells were transfected with the pCMV6-ENTRY control (Left lane) or pCMV6-ENTRY CHCHD10 ([RC209077], Right lane) cDNA for 48 hrs and lysed. Equivalent amounts of cell lysates (5 ug per lane) were separated by SDS-PAGE and immunoblotted with anti-CHCHD10 (1:2000). Positive lysates [LY403738] (100ug) and [LC403738] (20ug) can be purchased separately from OriGene.



Western blot analysis of extracts (35ug) from 293T cell line by using anti-CHCHD10 monoclonal antibody (1:500).