

## Product datasheet for **CF811778**

### **BPOZ (ABTB1) Mouse Monoclonal Antibody [Clone ID: OTI3G8]**

#### **Product data:**

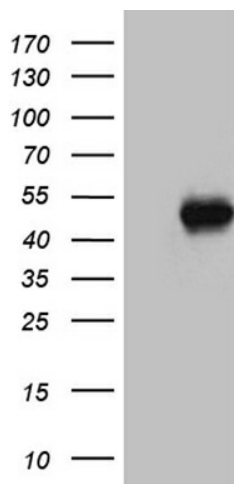
<b>Product Type:</b>	Primary Antibodies
<b>Clone Name:</b>	OTI3G8
<b>Applications:</b>	WB
<b>Recommended Dilution:</b>	WB 1:500
<b>Reactivity:</b>	Human, Mouse, Rat
<b>Host:</b>	Mouse
<b>Isotype:</b>	IgG1
<b>Clonality:</b>	Monoclonal
<b>Immunogen:</b>	Full length human recombinant protein of human ABTB1 (NP_115937) produced in E.coli.
<b>Formulation:</b>	Lyophilized powder (original buffer 1X PBS, pH 7.3, 8% trehalose)
<b>Reconstitution Method:</b>	For reconstitution, we recommend adding 100uL distilled water to a final antibody concentration of about 1 mg/mL. To use this carrier-free antibody for conjugation experiment, we strongly recommend performing another round of desalting process. (OriGene recommends Zeba Spin Desalting Columns, 7KMWCO from Thermo Scientific)
<b>Purification:</b>	Purified from mouse ascites fluids or tissue culture supernatant by affinity chromatography (protein A/G)
<b>Conjugation:</b>	Unconjugated
<b>Storage:</b>	Store at -20°C as received.
<b>Stability:</b>	Stable for 12 months from date of receipt.
<b>Predicted Protein Size:</b>	37.4 kDa
<b>Gene Name:</b>	ankyrin repeat and BTB domain containing 1
<b>Database Link:</b>	<a href="#">NP_115937</a> <a href="#">Entrez Gene 80283</a> <a href="#">MouseEntrez Gene 297432</a> <a href="#">RatEntrez Gene 80325</a> <a href="#">Human Q969K4</a>
<b>Background:</b>	This gene encodes a protein with an ankyrin repeat region and two BTB/POZ domains, which are thought to be involved in protein-protein interactions. Expression of this gene is activated by the phosphatase and tensin homolog, a tumor suppressor. Alternate splicing results in three transcript variants. [provided by RefSeq, Mar 2010]



[View online >](#)

Synonyms: BPOZ; BTB3; BTBD21; EF1ABP; PP2259

### Product images:



HEK293T cells were transfected with the pCMV6-ENTRY control (Cat# [PS100001], Left lane) or pCMV6-ENTRY ABTB1 (Cat# [RC204306], Right lane) cDNA for 48 hrs and lysed. Equivalent amounts of cell lysates (5 ug per lane) were separated by SDS-PAGE and immunoblotted with anti-ABTB1 (Cat# [TA811778])(1:500).