

Product datasheet for **CF811756**

PYCR1 Mouse Monoclonal Antibody [Clone ID: OTI4F2]

Product data:

Product Type:	Primary Antibodies
Clone Name:	OTI4F2
Applications:	IHC, WB
Recommended Dilution:	WB 1:500~2000, IHC 1:500
Reactivity:	Human, Mouse, Rat
Host:	Mouse
Isotype:	IgG1
Clonality:	Monoclonal
Immunogen:	Human recombinant protein fragment corresponding to amino acids 1-319 of human PYCR1 (NP_008838) produced in E.coli.
Formulation:	Lyophilized powder (original buffer 1X PBS, pH 7.3, 8% trehalose)
Reconstitution Method:	For reconstitution, we recommend adding 100uL distilled water to a final antibody concentration of about 1 mg/mL. To use this carrier-free antibody for conjugation experiment, we strongly recommend performing another round of desalting process. (OriGene recommends Zeba Spin Desalting Columns, 7KMWCO from Thermo Scientific)
Purification:	Purified from mouse ascites fluids or tissue culture supernatant by affinity chromatography (protein A/G)
Conjugation:	Unconjugated
Storage:	Store at -20°C as received.
Stability:	Stable for 12 months from date of receipt.
Predicted Protein Size:	33.2 kDa
Gene Name:	Homo sapiens pyrroline-5-carboxylate reductase 1 (PYCR1), transcript variant 1, mRNA; nuclear gene for mitochondrial product.
Database Link:	NP_008838 Entrez Gene 209027 MouseEntrez Gene 287877 RatEntrez Gene 5831 Human P32322



[View online »](#)

Background:

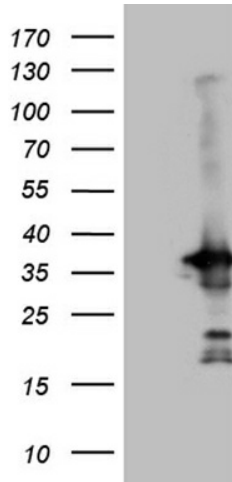
This gene encodes an enzyme that catalyzes the NAD(P)H-dependent conversion of pyrroline-5-carboxylate to proline. This enzyme may also play a physiologic role in the generation of NADP(+) in some cell types. The protein forms a homopolymer and localizes to the mitochondrion. Alternative splicing results in multiple transcript variants. [provided by RefSeq, Aug 2013]

Synonyms:

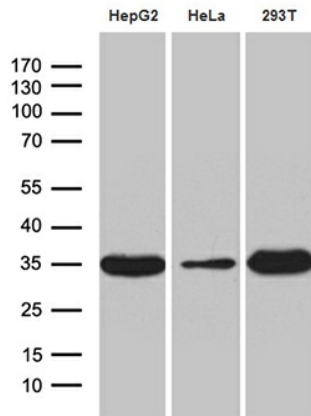
ARCL2B; ARCL3B; P5C; P5CR; PIG45; PP222; PRO3; PYCR

Protein Pathways:

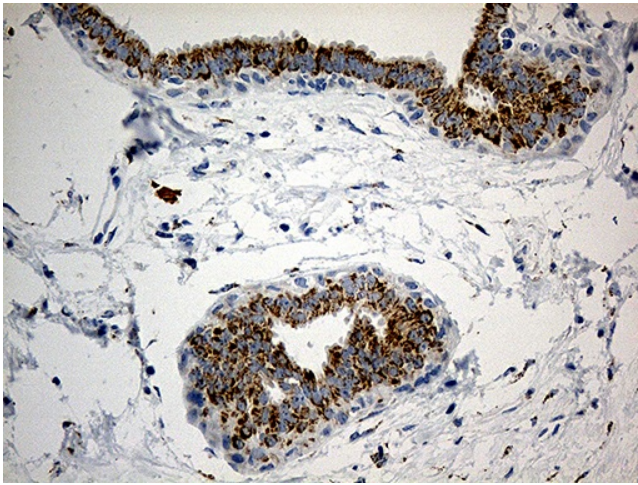
Arginine and proline metabolism, Metabolic pathways

Product images:


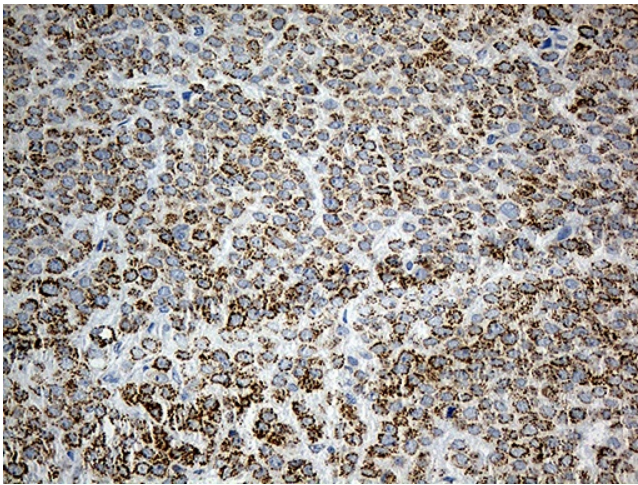
HEK293T cells were transfected with the pCMV6-ENTRY control (Cat# [PS100001], Left lane) or pCMV6-ENTRY PYCR1 (Cat# [RC210027], Right lane) cDNA for 48 hrs and lysed. Equivalent amounts of cell lysates (5 ug per lane) were separated by SDS-PAGE and immunoblotted with anti-PYCR1 (Cat# [TA811756])(1:2000). Positive lysates [LY416328] (100ug) and [LC416328] (20ug) can be purchased separately from OriGene.



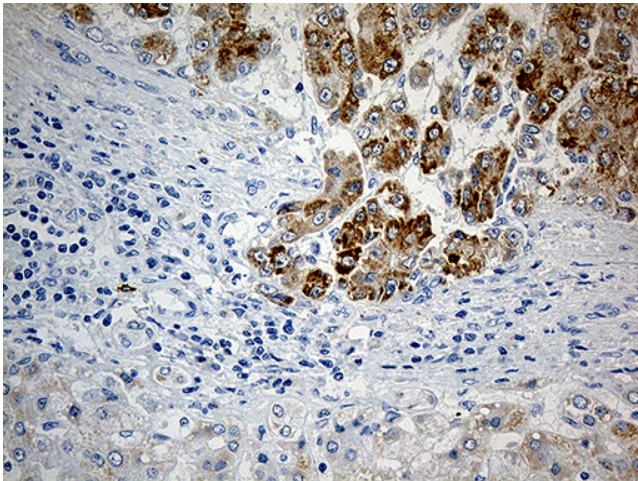
Western blot analysis of extracts (35ug) from 3 different cell lines by using anti-PYCR1 monoclonal antibody (1:500).



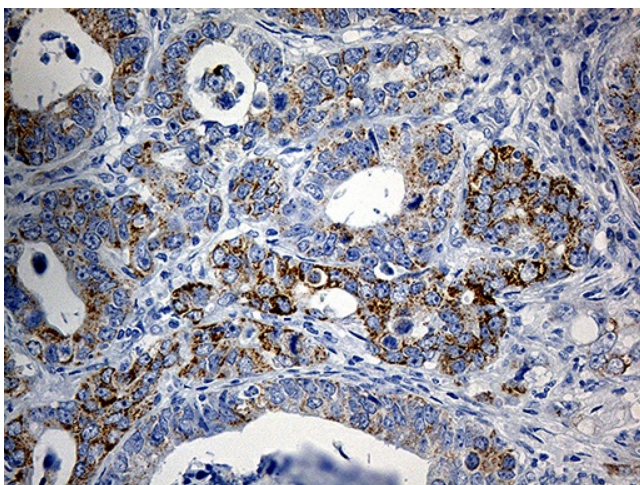
Immunohistochemical staining of paraffin-embedded Human breast tissue within the normal limits using anti-PYCR1 mouse monoclonal antibody. (Heat-induced epitope retrieval by 1mM EDTA in 10mM Tris buffer (pH8.5) at 120°C for 3min, [TA811756]) (1:500)



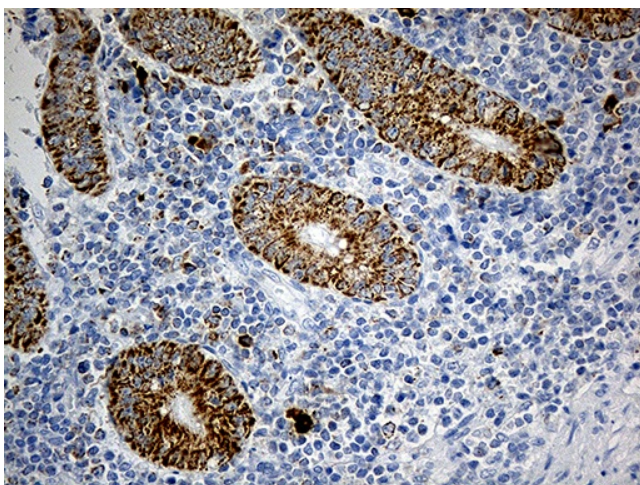
Immunohistochemical staining of paraffin-embedded Adenocarcinoma of Human breast tissue using anti-PYCR1 mouse monoclonal antibody. (Heat-induced epitope retrieval by 1mM EDTA in 10mM Tris buffer (pH8.5) at 120°C for 3min, [TA811756]) (1:500)



Immunohistochemical staining of paraffin-embedded Carcinoma of Human liver tissue using anti-PYCR1 mouse monoclonal antibody. (Heat-induced epitope retrieval by 1mM EDTA in 10mM Tris buffer (pH8.5) at 120°C for 3min, [TA811756]) (1:500)



Immunohistochemical staining of paraffin-embedded Human Gastric Carcinoma using anti-PYCR1 mouse monoclonal antibody. (Heat-induced epitope retrieval by 1mM EDTA in 10mM Tris buffer (pH8.5) at 120°C for 3min, [TA811756]) (1:500)



Immunohistochemical staining of paraffin-embedded Human appendix tissue within the normal limits using anti-PYCR1 mouse monoclonal antibody. (Heat-induced epitope retrieval by 1mM EDTA in 10mM Tris buffer (pH8.5) at 120°C for 3min, [TA811756]) (1:500)