

## Product datasheet for **CF811702**

### Pancreatic Lipase (PNLIP) Mouse Monoclonal Antibody [Clone ID: OTI5B9]

#### Product data:

Product Type:	Primary Antibodies
Clone Name:	OTI5B9
Applications:	IHC, WB
Recommended Dilution:	WB 1:2000, IHC 1:500
Reactivity:	Human
Host:	Mouse
Isotype:	IgG1
Clonality:	Monoclonal
Immunogen:	Human recombinant protein fragment corresponding to amino acids 355-465 of human PNLIP (NP_000927) produced in E.coli.
Formulation:	Lyophilized powder (original buffer 1X PBS, pH 7.3, 8% trehalose)
Reconstitution Method:	For reconstitution, we recommend adding 100uL distilled water to a final antibody concentration of about 1 mg/mL. To use this carrier-free antibody for conjugation experiment, we strongly recommend performing another round of desalting process. (OriGene recommends Zeba Spin Desalting Columns, 7KMWCO from Thermo Scientific)
Purification:	Purified from mouse ascites fluids or tissue culture supernatant by affinity chromatography (protein A/G)
Conjugation:	Unconjugated
Storage:	Store at -20°C as received.
Stability:	Stable for 12 months from date of receipt.
Predicted Protein Size:	51.16 kDa
Gene Name:	pancreatic lipase
Database Link:	<a href="#">NP_000927</a> <a href="#">Entrez Gene 5406 Human P16233</a>
Background:	This gene is a member of the lipase gene family. It encodes a carboxyl esterase that hydrolyzes insoluble, emulsified triglycerides, and is essential for the efficient digestion of dietary fats. This gene is expressed specifically in the pancreas. [provided by RefSeq, Jul 2008]

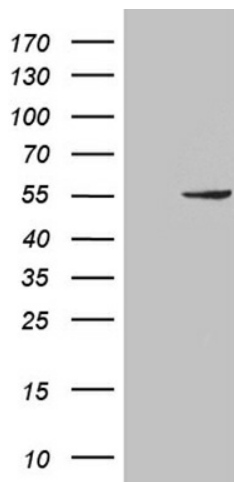
[View online »](#)

**Synonyms:** PL; PNLIPD; PTL

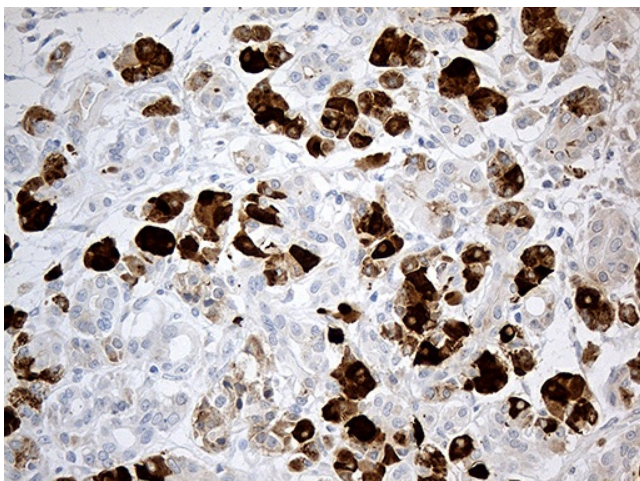
**Protein Families:** Druggable Genome, Secreted Protein

**Protein Pathways:** Glycerolipid metabolism, Metabolic pathways

### Product images:



HEK293T cells were transfected with the pCMV6-ENTRY control (Cat# [PS100001], Left lane) or pCMV6-ENTRY PNLIP (Cat# [RC204735], Right lane) cDNA for 48 hrs and lysed. Equivalent amounts of cell lysates (5 ug per lane) were separated by SDS-PAGE and immunoblotted with anti-PNLIP (Cat# [TA811702])(1:2000). Positive lysates [LY424451] (100ug) and [LC424451] (20ug) can be purchased separately from OriGene.



Immunohistochemical staining of paraffin-embedded Human pancreas tissue within the normal limits using anti-PNLIP mouse monoclonal antibody. (Heat-induced epitope retrieval by 1mM EDTA in 10mM Tris buffer (pH8.5) at 120°C for 3min, [TA811702]) (1:500)