

## Product datasheet for **CF811688**

### **PDE3B Mouse Monoclonal Antibody [Clone ID: OTI3F5]**

#### **Product data:**

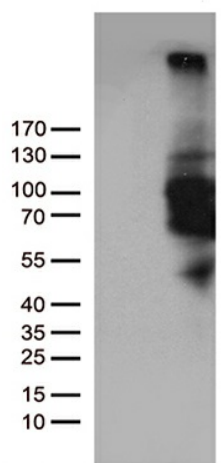
<b>Product Type:</b>	Primary Antibodies
<b>Clone Name:</b>	OTI3F5
<b>Applications:</b>	WB
<b>Recommended Dilution:</b>	WB 1:200
<b>Reactivity:</b>	Human
<b>Host:</b>	Mouse
<b>Isotype:</b>	IgG2b
<b>Clonality:</b>	Monoclonal
<b>Immunogen:</b>	Human recombinant protein fragment corresponding to amino acids 654-1073 of human PDE3B (NP_000913) produced in E.coli.
<b>Formulation:</b>	Lyophilized powder (original buffer 1X PBS, pH 7.3, 8% trehalose)
<b>Reconstitution Method:</b>	For reconstitution, we recommend adding 100uL distilled water to a final antibody concentration of about 1 mg/mL. To use this carrier-free antibody for conjugation experiment, we strongly recommend performing another round of desalting process. (OriGene recommends Zeba Spin Desalting Columns, 7KMWCO from Thermo Scientific)
<b>Purification:</b>	Purified from mouse ascites fluids or tissue culture supernatant by affinity chromatography (protein A/G)
<b>Conjugation:</b>	Unconjugated
<b>Storage:</b>	Store at -20°C as received.
<b>Stability:</b>	Stable for 12 months from date of receipt.
<b>Predicted Protein Size:</b>	124.2 kDa
<b>Gene Name:</b>	phosphodiesterase 3B
<b>Database Link:</b>	<a href="#">NP_000913</a> <a href="#">Entrez Gene 5140 Human</a> <a href="#">Q13370</a>
<b>Synonyms:</b>	cGIPDE1; HcGIP1
<b>Protein Families:</b>	Druggable Genome, Transmembrane



[View online »](#)

Protein Pathways: Insulin signaling pathway, Progesterone-mediated oocyte maturation, Purine metabolism

### Product images:



HEK293T cells were transfected with the pCMV6-ENTRY control (Cat# [PS100001], Left lane) or pCMV6-ENTRY PDE3B (Cat# [RC219619], Right lane) cDNA for 48 hrs and lysed. Equivalent amounts of cell lysates (5 ug per lane) were separated by SDS-PAGE and immunoblotted with anti-PDE3B (Cat# [TA811688]). Positive lysates [LY424435] (100ug) and [LC424435] (20ug) can be purchased separately from OriGene.