

Product datasheet for **CF811671**

PAX7 Mouse Monoclonal Antibody [Clone ID: OTI4G5]

Product data:

Product Type:	Primary Antibodies
Clone Name:	OTI4G5
Applications:	WB
Recommended Dilution:	WB 1:2000
Reactivity:	Human, Mouse, Rat
Host:	Mouse
Isotype:	IgG1
Clonality:	Monoclonal
Immunogen:	Human recombinant protein fragment corresponding to amino acids 34-491 of human PAX7 (NP_039236) produced in E.coli.
Formulation:	Lyophilized powder (original buffer 1X PBS, pH 7.3, 8% trehalose)
Reconstitution Method:	For reconstitution, we recommend adding 100uL distilled water to a final antibody concentration of about 1 mg/mL. To use this carrier-free antibody for conjugation experiment, we strongly recommend performing another round of desalting process. (OriGene recommends Zeba Spin Desalting Columns, 7KMWCO from Thermo Scientific)
Purification:	Purified from mouse ascites fluids or tissue culture supernatant by affinity chromatography (protein A/G)
Conjugation:	Unconjugated
Storage:	Store at -20°C as received.
Stability:	Stable for 12 months from date of receipt.
Gene Name:	paired box 7
Database Link:	NP_039236 Entrez Gene 18509 Mouse Entrez Gene 500574 Rat Entrez Gene 5081 Human P23759



[View online »](#)

Background:

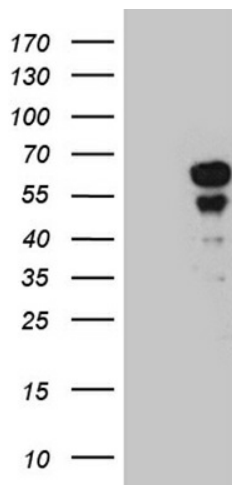
This gene is a member of the paired box (PAX) family of transcription factors. Members of this gene family typically contain a paired box domain, an octapeptide, and a paired-type homeodomain. These genes play critical roles during fetal development and cancer growth. The specific function of the paired box 7 gene is unknown but speculated to involve tumor suppression since fusion of this gene with a forkhead domain family member has been associated with alveolar rhabdomyosarcoma. Three transcript variants encoding different isoforms have been found for this gene. [provided by RefSeq, Sep 2008]

Synonyms:

HUP1; PAX7B; RMS2

Protein Families:

Adult stem cells, Druggable Genome, Embryonic stem cells, ES Cell Differentiation/IPS, Transcription Factors

Product images:

HEK293T cells were transfected with the pCMV6-ENTRY control (Cat# [PS100001], Left lane) or pCMV6-ENTRY PAX7 (Cat# [RC216836], Right lane) cDNA for 48 hrs and lysed. Equivalent amounts of cell lysates (5 ug per lane) were separated by SDS-PAGE and immunoblotted with anti-PAX7 (Cat# [TA811671])(1:2000). Positive lysates [LY415548] (100ug) and [LC415548] (20ug) can be purchased separately from OriGene.