

Product datasheet for **CF811658**

TOPBP1 Mouse Monoclonal Antibody [Clone ID: OTI5C12]

Product data:

Product Type:	Primary Antibodies
Clone Name:	OTI5C12
Applications:	WB
Recommended Dilution:	WB 1:2000
Reactivity:	Human
Host:	Mouse
Isotype:	IgG2a
Clonality:	Monoclonal
Immunogen:	Human recombinant protein fragment corresponding to amino acids 892-1146 of human TOPBP1 (NP_008958) produced in E.coli.
Formulation:	Lyophilized powder (original buffer 1X PBS, pH 7.3, 8% trehalose)
Reconstitution Method:	For reconstitution, we recommend adding 100uL distilled water to a final antibody concentration of about 1 mg/mL. To use this carrier-free antibody for conjugation experiment, we strongly recommend performing another round of desalting process. (OriGene recommends Zeba Spin Desalting Columns, 7KMWCO from Thermo Scientific)
Purification:	Purified from mouse ascites fluids or tissue culture supernatant by affinity chromatography (protein A/G)
Conjugation:	Unconjugated
Storage:	Store at -20°C as received.
Stability:	Stable for 12 months from date of receipt.
Predicted Protein Size:	171.1 kDa
Gene Name:	DNA topoisomerase II binding protein 1
Database Link:	NP_008958 Entrez Gene 11073 Human Q92547



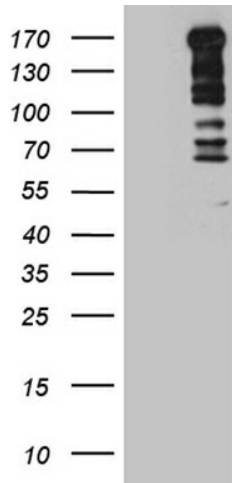
[View online »](#)

Background:

This gene encodes a binding protein which interacts with the C-terminal region of topoisomerase II beta. This interaction suggests a supportive role for this protein in the catalytic reactions of topoisomerase II beta through transient breakages of DNA strands. [provided by RefSeq, Jul 2008]

Synonyms:

TOP2BP1

Product images:

HEK293T cells were transfected with the pCMV6-ENTRY control (Cat# [PS100001], Left lane) or pCMV6-ENTRY TOPBP1 (Cat# [RC218584], Right lane) cDNA for 48 hrs and lysed. Equivalent amounts of cell lysates (5 ug per lane) were separated by SDS-PAGE and immunoblotted with anti-TOPBP (Cat# [TA811658]). Positive lysates [LY416246] (100ug) and [LC416246] (20ug) can be purchased separately from OriGene.