

## Product datasheet for **CF811568**

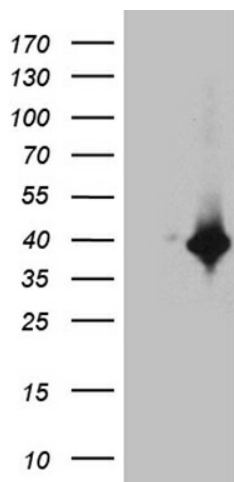
### DTWD1 Mouse Monoclonal Antibody [Clone ID: OTI2D2]

#### Product data:

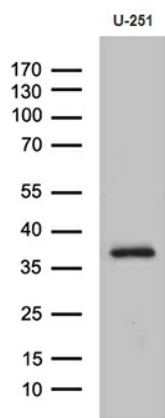
|                        |  |
|------------------------|--|
| Product Type:          | Primary Antibodies   |
| Clone Name:            | OTI2D2   |
| Applications:          | WB   |
| Recommended Dilution:  | WB 1:500~2000  |
| Reactivity:            | Human  |
| Host:                  | Mouse  |
| Isotype:               | IgG2b  |
| Clonality:             | Monoclonal   |
| Immunogen:             | Full length human recombinant protein of human DTWD1 (NP_001138427) produced in E.coli.  |
| Formulation:           | Lyophilized powder (original buffer 1X PBS, pH 7.3, 8% trehalose)  |
| Reconstitution Method: | For reconstitution, we recommend adding 100uL distilled water to a final antibody concentration of about 1 mg/mL. To use this carrier-free antibody for conjugation experiment, we strongly recommend performing another round of desalting process. (OriGene recommends Zeba Spin Desalting Columns, 7KMWCO from Thermo Scientific) |
| Purification:          | Purified from mouse ascites fluids or tissue culture supernatant by affinity chromatography (protein A/G)  |
| Conjugation:           | Unconjugated   |
| Storage:               | Store at -20°C as received.  |
| Stability:             | Stable for 12 months from date of receipt.   |
| Gene Name:             | DTW domain containing 1  |
| Database Link:         | <a href="#">NP_001138427</a><br><a href="#">Entrez Gene 56986 Human</a><br><a href="#">Q8N5C7</a>  |
| Synonyms:              | MDS009   |



[View online »](#)

**Product images:**

HEK293T cells were transfected with the pCMV6-ENTRY control (Left lane) or pCMV6-ENTRY DTWD1 ([RC227602], Right lane) cDNA for 48 hrs and lysed. Equivalent amounts of cell lysates (5 ug per lane) were separated by SDS-PAGE and immunoblotted with anti-DTWD1 (1:2000). Positive lysates [LY428603] (100ug) and [LC428603] (20ug) can be purchased separately from OriGene.



Western blot analysis of extracts (35ug) from U251 cell line by using anti-DTWD1 monoclonal antibody (1:500).