

## Product datasheet for **CF811560**

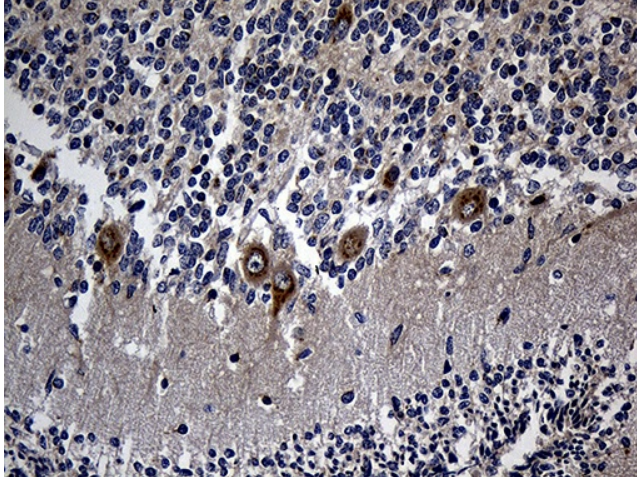
### Repulsive Guidance Molecule A (RGMA) Mouse Monoclonal Antibody [Clone ID: OTI4G8]

#### Product data:

Product Type:	Primary Antibodies
Clone Name:	OTI4G8
Applications:	IHC
Recommended Dilution:	IHC 1:250
Reactivity:	Human, Mouse, Rat
Host:	Mouse
Isotype:	IgG2a
Clonality:	Monoclonal
Immunogen:	Human recombinant protein fragment corresponding to amino acids 169-424 of human RGMA (NP_064596) produced in E.coli.
Formulation:	Lyophilized powder (original buffer 1X PBS, pH 7.3, 8% trehalose)
Reconstitution Method:	For reconstitution, we recommend adding 100uL distilled water to a final antibody concentration of about 1 mg/mL. To use this carrier-free antibody for conjugation experiment, we strongly recommend performing another round of desalting process. (OriGene recommends Zeba Spin Desalting Columns, 7KMWCO from Thermo Scientific)
Purification:	Purified from mouse ascites fluids or tissue culture supernatant by affinity chromatography (protein A/G)
Conjugation:	Unconjugated
Storage:	Store at -20°C as received.
Stability:	Stable for 12 months from date of receipt.
Predicted Protein Size:	49.2 kDa
Gene Name:	repulsive guidance molecule BMP co-receptor a
Database Link:	<a href="#">NP_064596</a> <a href="#">Entrez Gene 244058</a> <a href="#">MouseEntrez Gene 308739</a> <a href="#">RatEntrez Gene 56963</a> <a href="#">Human Q96B86</a>
Synonyms:	RGM



[View online »](#)

**Product images:**

Immunohistochemical staining of paraffin-embedded Human embryonic cerebellum within the normal limits using anti-RGMA mouse monoclonal antibody. (Heat-induced epitope retrieval by 1mM EDTA in 10mM Tris buffer (pH8.5) at 120°C for 3min, [TA811560]) (1:250)