

## Product datasheet for **CF811554**

### **RANBP1 Mouse Monoclonal Antibody [Clone ID: OTI8E1]**

#### **Product data:**

<b>Product Type:</b>	Primary Antibodies
<b>Clone Name:</b>	OTI8E1
<b>Applications:</b>	WB
<b>Recommended Dilution:</b>	WB 1:500~2000
<b>Reactivity:</b>	Human, Mouse, Rat
<b>Host:</b>	Mouse
<b>Isotype:</b>	IgG2b
<b>Clonality:</b>	Monoclonal
<b>Immunogen:</b>	Full length human recombinant protein of human RANBP1 (NP_002873) produced in HEK293T cell.
<b>Formulation:</b>	Lyophilized powder (original buffer 1X PBS, pH 7.3, 8% trehalose)
<b>Reconstitution Method:</b>	For reconstitution, we recommend adding 100uL distilled water to a final antibody concentration of about 1 mg/mL. To use this carrier-free antibody for conjugation experiment, we strongly recommend performing another round of desalting process. (OriGene recommends Zeba Spin Desalting Columns, 7KMWCO from Thermo Scientific)
<b>Purification:</b>	Purified from mouse ascites fluids or tissue culture supernatant by affinity chromatography (protein A/G)
<b>Conjugation:</b>	Unconjugated
<b>Storage:</b>	Store at -20°C as received.
<b>Stability:</b>	Stable for 12 months from date of receipt.
<b>Gene Name:</b>	RAN binding protein 1
<b>Database Link:</b>	<a href="#">NP_002873</a> <a href="#">Entrez Gene 19385 Mouse</a> <a href="#">Entrez Gene 360739 Rat</a> <a href="#">Entrez Gene 5902 Human</a> <a href="#">P43487</a>



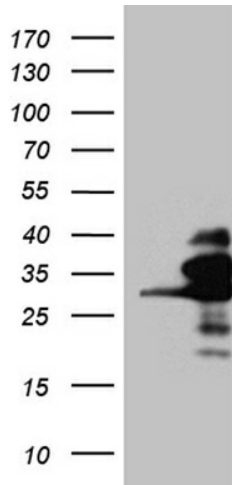
[View online »](#)

**Background:**

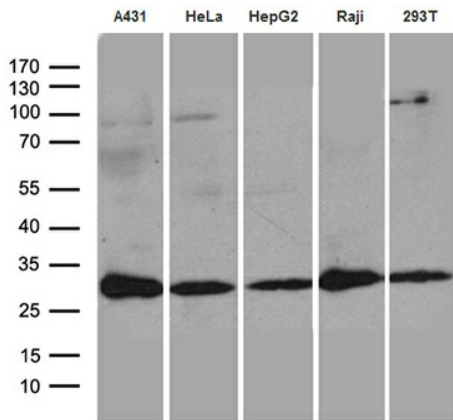
This gene encodes a protein that forms a complex with Ras-related nuclear protein (Ran) and metabolizes guanoside triphosphate (GTP). This complex participates in the regulation of the cell cycle by controlling transport of proteins and nucleic acids into the nucleus. There are multiple pseudogenes for this gene on chromosomes 9, 12, 17, and X. Alternative splicing results in multiple transcript variants. [provided by RefSeq, Jul 2013]

**Synonyms:**

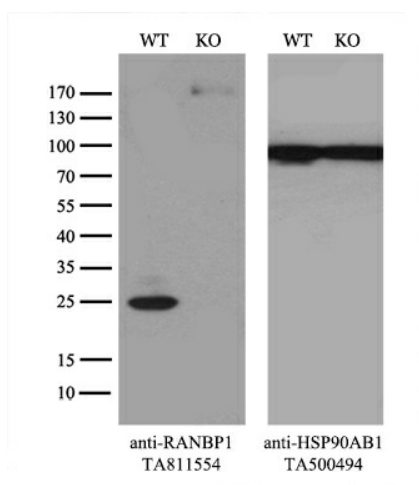
HTF9A

**Product images:**


HEK293T cells were transfected with the pCMV6-ENTRY control (Cat# [PS100001], Left lane) or pCMV6-ENTRY RANBP1 (Cat# [RC223305], Right lane) cDNA for 48 hrs and lysed. Equivalent amounts of cell lysates (5 ug per lane) were separated by SDS-PAGE and immunoblotted with anti-RANBP1 (Cat# [TA811554])(1:2000). Positive lysates [LY401015] (100ug) and [LC401015] (20ug) can be purchased separately from OriGene.



Western blot analysis of extracts (35ug) from 5 cell lines lysates by using anti-RANBP1 monoclonal antibody (1:500).



Equivalent amounts of cell lysates (10 ug per lane) of wild-type 293T cells (WT, Cat# LC810293T) and RANBP1-Knockout 293T cells (KO, Cat# [LC811130]) were separated by SDS-PAGE and immunoblotted with anti-RANBP1 monoclonal antibody [TA811554], (1:2000). Then the blotted membrane was stripped and reprobed with anti-HSP90AB1 antibody ([TA500494]) as a loading control.