

Product datasheet for **CF811466**

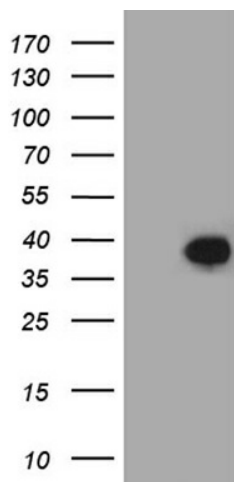
FAM151B Mouse Monoclonal Antibody [Clone ID: OT11F5]

Product data:

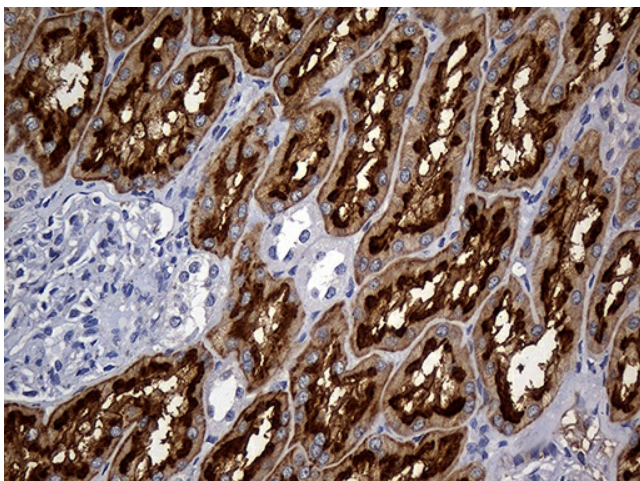
Product Type:	Primary Antibodies
Clone Name:	OT11F5
Applications:	IHC, WB
Recommended Dilution:	WB 1:2000, IHC 1:500
Reactivity:	Human, Mouse
Host:	Mouse
Isotype:	IgG2a
Clonality:	Monoclonal
Immunogen:	Full length human recombinant protein of human FAM151B (NP_991111) produced in HEK293T cell.
Formulation:	Lyophilized powder (original buffer 1X PBS, pH 7.3, 8% trehalose)
Reconstitution Method:	For reconstitution, we recommend adding 100uL distilled water to a final antibody concentration of about 1 mg/mL. To use this carrier-free antibody for conjugation experiment, we strongly recommend performing another round of desalting process. (OriGene recommends Zeba Spin Desalting Columns, 7KMWCO from Thermo Scientific)
Purification:	Purified from mouse ascites fluids or tissue culture supernatant by affinity chromatography (protein A/G)
Conjugation:	Unconjugated
Storage:	Store at -20°C as received.
Stability:	Stable for 12 months from date of receipt.
Predicted Protein Size:	31.2 kDa
Gene Name:	family with sequence similarity 151 member B
Database Link:	NP_991111 Entrez Gene 167555 Human Q6UXP7
Synonyms:	UNQ9217



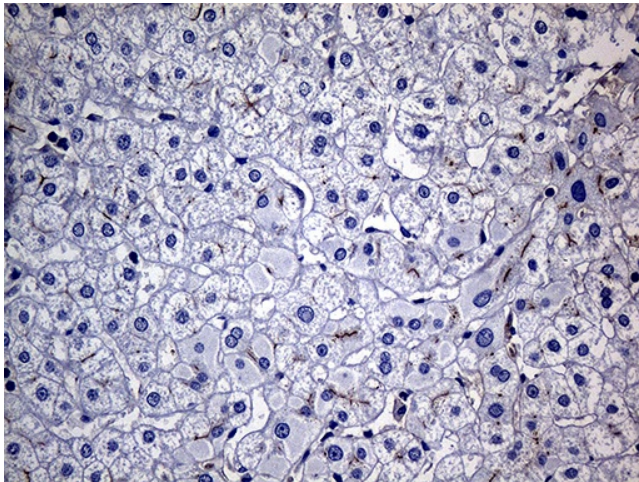
[View online »](#)

Product images:

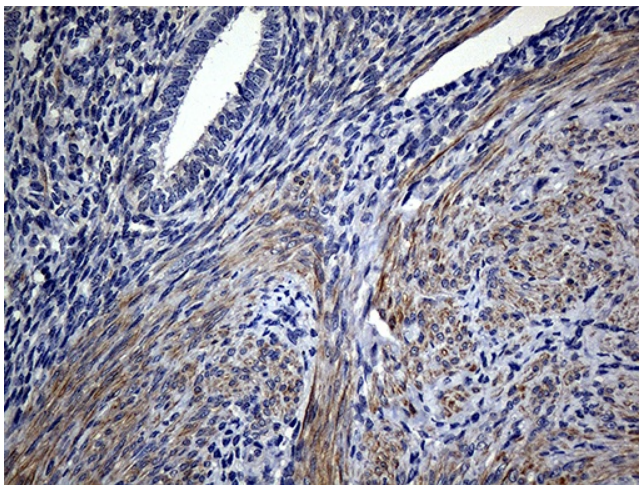
HEK293T cells were transfected with the pCMV6-ENTRY control (Cat# [PS100001], Left lane) or pCMV6-ENTRY FAM151B (Cat# [RC215182], Right lane) cDNA for 48 hrs and lysed. Equivalent amounts of cell lysates (5 ug per lane) were separated by SDS-PAGE and immunoblotted with anti-FAM151B (Cat# [TA811466])(1:2000). Positive lysates [LY404256] (100ug) and [LC404256] (20ug) can be purchased separately from OriGene.



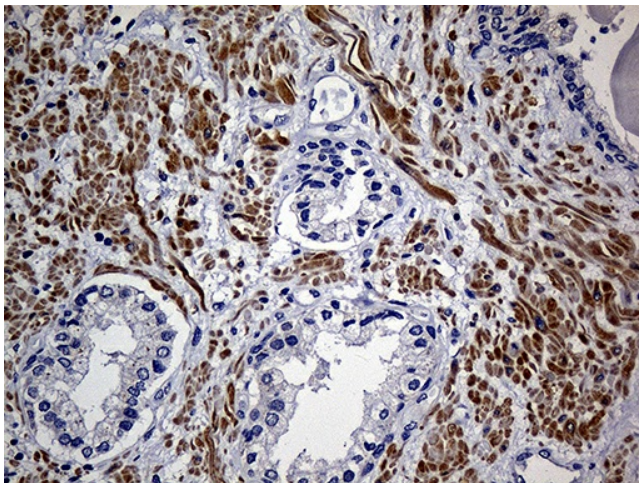
Immunohistochemical staining of paraffin-embedded Human Kidney tissue within the normal limits using anti-FAM151B mouse monoclonal antibody. (Heat-induced epitope retrieval by 1mM EDTA in 10mM Tris buffer (pH8.5) at 120°C for 3min, [TA811466]) (1:500)



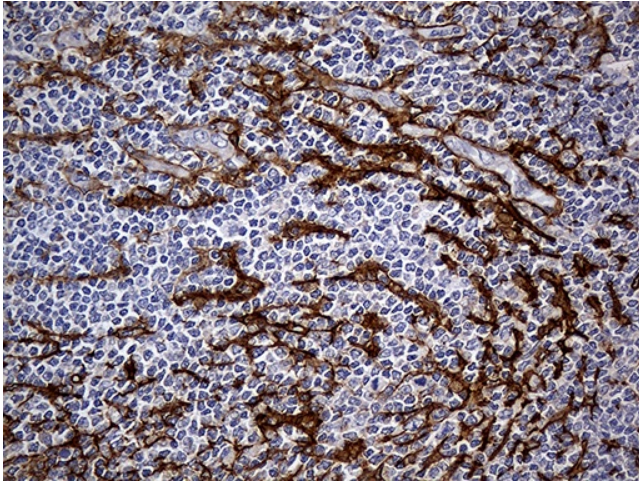
Immunohistochemical staining of paraffin-embedded Human liver tissue within the normal limits using anti-FAM151B mouse monoclonal antibody. (Heat-induced epitope retrieval by 1mM EDTA in 10mM Tris buffer (pH8.5) at 120°C for 3min, [TA811466]) (1:500)



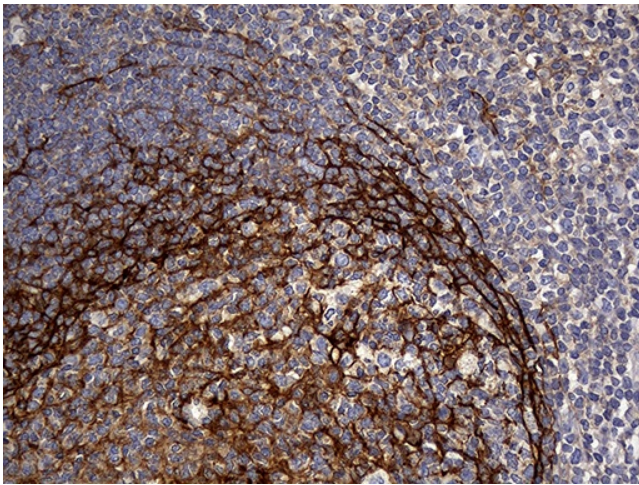
Immunohistochemical staining of paraffin-embedded Human endometrium tissue within the normal limits using anti-FAM151B mouse monoclonal antibody. (Heat-induced epitope retrieval by 1mM EDTA in 10mM Tris buffer (pH8.5) at 120°C for 3min, [TA811466]) (1:500)



Immunohistochemical staining of paraffin-embedded Human prostate tissue within the normal limits using anti-FAM151B mouse monoclonal antibody. (Heat-induced epitope retrieval by 1mM EDTA in 10mM Tris buffer (pH8.5) at 120°C for 3min, [TA811466]) (1:500)



Immunohistochemical staining of paraffin-embedded Human lymphoma tissue using anti-FAM151B mouse monoclonal antibody. (Heat-induced epitope retrieval by 1mM EDTA in 10mM Tris buffer (pH8.5) at 120°C for 3min, [TA811466]) (1:500)



Immunohistochemical staining of paraffin-embedded Human tonsil within the normal limits using anti-FAM151B mouse monoclonal antibody. (Heat-induced epitope retrieval by 1mM EDTA in 10mM Tris buffer (pH8.5) at 120°C for 3min, [TA811466]) (1:500)