

## Product datasheet for **CF811463**

### ALDH3B1 Mouse Monoclonal Antibody [Clone ID: OTI2F6]

#### Product data:

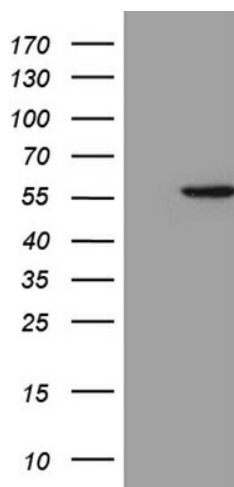
Product Type:	Primary Antibodies
Clone Name:	OTI2F6
Applications:	WB
Recommended Dilution:	WB 1:2000
Reactivity:	Human, Rat
Host:	Mouse
Isotype:	IgG1
Clonality:	Monoclonal
Immunogen:	Human recombinant protein fragment corresponding to amino acids 1-465 of human ALDH3B1 (NP_000685) produced in E.coli.
Formulation:	Lyophilized powder (original buffer 1X PBS, pH 7.3, 8% trehalose)
Reconstitution Method:	For reconstitution, we recommend adding 100uL distilled water to a final antibody concentration of about 1 mg/mL. To use this carrier-free antibody for conjugation experiment, we strongly recommend performing another round of desalting process. (OriGene recommends Zeba Spin Desalting Columns, 7KMWCO from Thermo Scientific)
Purification:	Purified from mouse ascites fluids or tissue culture supernatant by affinity chromatography (protein A/G)
Conjugation:	Unconjugated
Storage:	Store at -20°C as received.
Stability:	Stable for 12 months from date of receipt.
Gene Name:	aldehyde dehydrogenase 3 family member B1
Database Link:	<a href="#">NP_000685</a> <a href="#">Entrez Gene 309147 Rat</a> <a href="#">Entrez Gene 221 Human</a> <a href="#">P43353</a>
Synonyms:	ALDH4; ALDH7
Protein Families:	Druggable Genome



[View online »](#)

**Protein Pathways:** Drug metabolism - cytochrome P450, Glycolysis / Gluconeogenesis, Histidine metabolism, Metabolic pathways, Metabolism of xenobiotics by cytochrome P450, Phenylalanine metabolism, Tyrosine metabolism

**Product images:**



HEK293T cells were transfected with the pCMV6-ENTRY control (Cat# [PS100001], Left lane) or pCMV6-ENTRY ALDH3B1 (Cat# [RC202242], Right lane) cDNA for 48 hrs and lysed. Equivalent amounts of cell lysates (5 ug per lane) were separated by SDS-PAGE and immunoblotted with anti-ALDH3B1 (Cat# [TA811463])(1:2000).