

## Product datasheet for **CF811460**

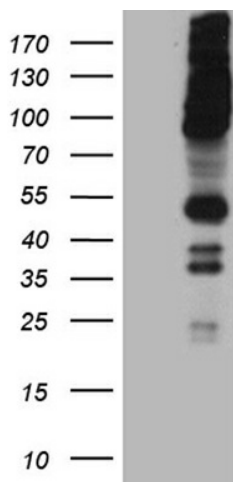
### RUSC2 Mouse Monoclonal Antibody [Clone ID: OT11A1]

#### Product data:

Product Type:	Primary Antibodies
Clone Name:	OT11A1
Applications:	WB
Recommended Dilution:	WB 1:2000
Reactivity:	Human, Mouse, Rat
Host:	Mouse
Isotype:	IgG1
Clonality:	Monoclonal
Immunogen:	Human recombinant protein fragment corresponding to amino acids 1176-1516 of human RUSC2 (NP_055621) produced in E.coli.
Formulation:	Lyophilized powder (original buffer 1X PBS, pH 7.3, 8% trehalose)
Reconstitution Method:	For reconstitution, we recommend adding 100uL distilled water to a final antibody concentration of about 1 mg/mL. To use this carrier-free antibody for conjugation experiment, we strongly recommend performing another round of desalting process. (OriGene recommends Zeba Spin Desalting Columns, 7KMWCO from Thermo Scientific)
Purification:	Purified from mouse ascites fluids or tissue culture supernatant by affinity chromatography (protein A/G)
Conjugation:	Unconjugated
Storage:	Store at -20°C as received.
Stability:	Stable for 12 months from date of receipt.
Gene Name:	RUN and SH3 domain containing 2
Database Link:	<a href="#">NP_055621</a> <a href="#">Entrez Gene 100213 Mouse</a> <a href="#">Entrez Gene 9853 Human</a> <a href="#">Q8N2Y8</a>
Background:	This gene encodes a RUN and SH3 domain containing protein that interacts with Rab1b and Rab1-binding protein GM130. Alternatively spliced transcript variants have been observed for this gene. [provided by RefSeq, Jun 2012]
Synonyms:	Iporin



[View online »](#)

**Product images:**

HEK293T cells were transfected with the pCMV6-ENTRY control (Cat# [PS100001], Left lane) or pCMV6-ENTRY RUSC2 (Cat# [RC215610], Right lane) cDNA for 48 hrs and lysed. Equivalent amounts of cell lysates (5 ug per lane) were separated by SDS-PAGE and immunoblotted with anti-RUSC2 (Cat# [TA811460])(1:2000). Positive lysates [LY415015] (100ug) and [LC415015] (20ug) can be purchased separately from OriGene.