

## Product datasheet for **CF811443**

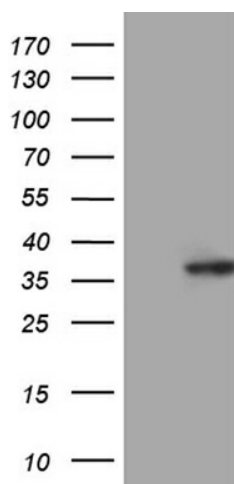
### **TEDC1 Mouse Monoclonal Antibody [Clone ID: OTI2D6]**

#### **Product data:**

|                               |  |
|-------------------------------|--|
| <b>Product Type:</b>          | Primary Antibodies   |
| <b>Clone Name:</b>            | OTI2D6   |
| <b>Applications:</b>          | WB   |
| <b>Recommended Dilution:</b>  | WB 1:2000  |
| <b>Reactivity:</b>            | Human  |
| <b>Host:</b>                  | Mouse  |
| <b>Isotype:</b>               | IgG2a  |
| <b>Clonality:</b>             | Monoclonal   |
| <b>Immunogen:</b>             | Full length human recombinant protein of human C14ORF80 (NP_775879) produced in E.coli.  |
| <b>Formulation:</b>           | Lyophilized powder (original buffer 1X PBS, pH 7.3, 8% trehalose)  |
| <b>Reconstitution Method:</b> | For reconstitution, we recommend adding 100uL distilled water to a final antibody concentration of about 1 mg/mL. To use this carrier-free antibody for conjugation experiment, we strongly recommend performing another round of desalting process. (OriGene recommends Zeba Spin Desalting Columns, 7KMWCO from Thermo Scientific) |
| <b>Purification:</b>          | Purified from mouse ascites fluids or tissue culture supernatant by affinity chromatography (protein A/G)  |
| <b>Conjugation:</b>           | Unconjugated   |
| <b>Storage:</b>               | Store at -20°C as received.  |
| <b>Stability:</b>             | Stable for 12 months from date of receipt.   |
| <b>Gene Name:</b>             | tubulin epsilon and delta complex 1  |
| <b>Database Link:</b>         | <a href="#">NP_775879</a><br><a href="#">Entrez Gene 283643 Human</a><br><a href="#">Q86SX3</a>  |
| <b>Synonyms:</b>              | chromosome 14 open reading frame 80; MGC16771  |



[View online »](#)

**Product images:**

HEK293T cells were transfected with the pCMV6-ENTRY control (Left lane) or pCMV6-ENTRY C14orf80 ([RC203670], Right lane) cDNA for 48 hrs and lysed. Equivalent amounts of cell lysates (5 ug per lane) were separated by SDS-PAGE and immunoblotted with anti-C14orf80 (1:2000).