

Product datasheet for **CF811442**

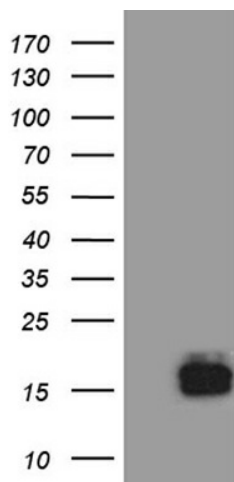
Trefoil Factor 3 (TFF3) Mouse Monoclonal Antibody [Clone ID: OT15B2]

Product data:

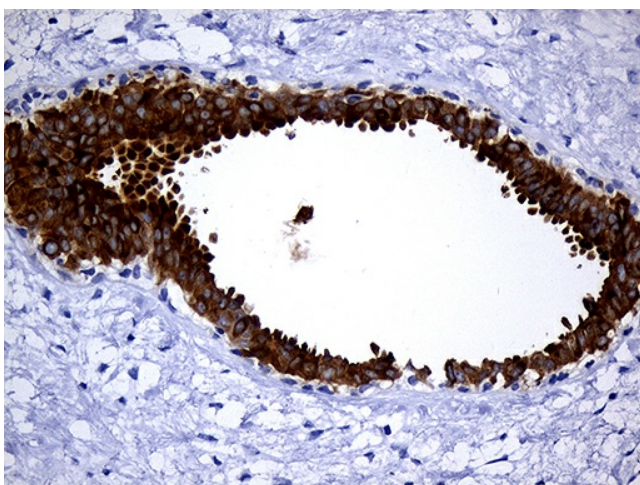
Product Type:	Primary Antibodies
Clone Name:	OT15B2
Applications:	IHC, WB
Recommended Dilution:	WB 1:2000, IHC 1:500
Reactivity:	Human
Host:	Mouse
Isotype:	IgG1
Clonality:	Monoclonal
Immunogen:	Human recombinant protein fragment corresponding to amino acids 72-130 of human TFF3 (NP_003217) produced in E.coli.
Formulation:	Lyophilized powder (original buffer 1X PBS, pH 7.3, 8% trehalose)
Reconstitution Method:	For reconstitution, we recommend adding 100uL distilled water to a final antibody concentration of about 1 mg/mL. To use this carrier-free antibody for conjugation experiment, we strongly recommend performing another round of desalting process. (OriGene recommends Zeba Spin Desalting Columns, 7KMWCO from Thermo Scientific)
Purification:	Purified from mouse ascites fluids or tissue culture supernatant by affinity chromatography (protein A/G)
Conjugation:	Unconjugated
Storage:	Store at -20°C as received.
Stability:	Stable for 12 months from date of receipt.
Predicted Protein Size:	14.25 kDa
Gene Name:	trefoil factor 3
Database Link:	NP_003217 Entrez Gene 7033 Human Q07654
Synonyms:	ITF; P1B; TFI
Protein Families:	Secreted Protein



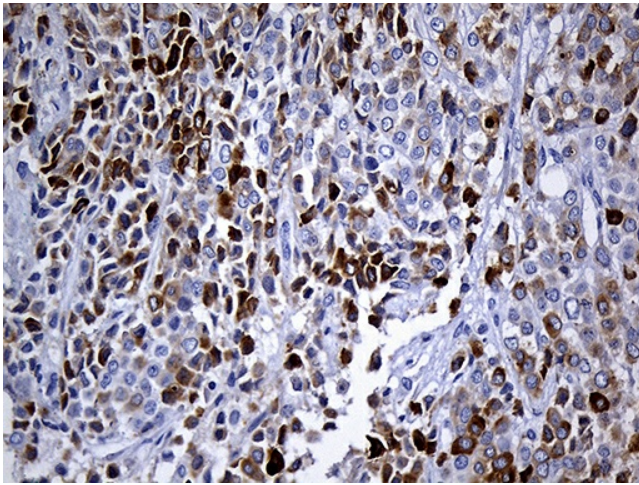
[View online »](#)

Product images:

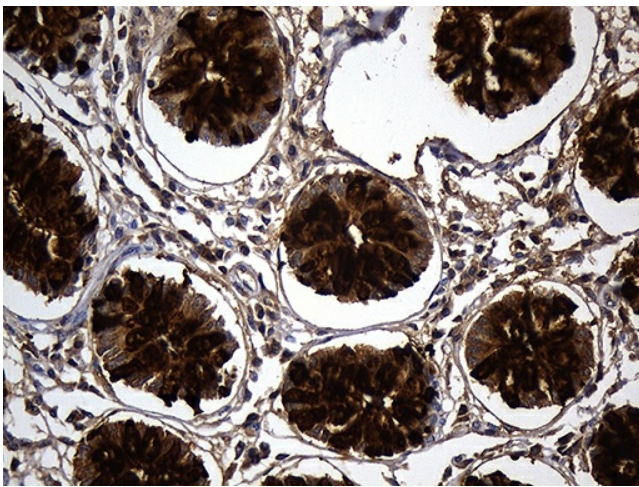
HEK293T cells were transfected with the pCMV6-ENTRY control (Left lane) or pCMV6-ENTRY TFF3 ([RC223558], Right lane) cDNA for 48 hrs and lysed. Equivalent amounts of cell lysates (5 ug per lane) were separated by SDS-PAGE and immunoblotted with anti-TFF3 (1:2000). Positive lysates [LY418823] (100ug) and [LC418823] (20ug) can be purchased separately from OriGene.



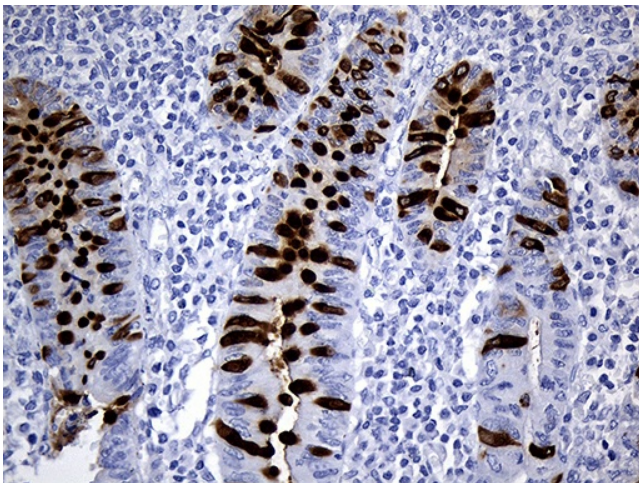
Immunohistochemical staining of paraffin-embedded Human breast tissue within the normal limits using anti-TFF3 mouse monoclonal antibody. (Heat-induced epitope retrieval by 1mM EDTA in 10mM Tris buffer (pH8.5) at 120°C for 3min, [TA811442]) (1:500)



Immunohistochemical staining of paraffin-embedded Adenocarcinoma of Human breast tissue using anti-TFF3 mouse monoclonal antibody. (Heat-induced epitope retrieval by 1mM EDTA in 10mM Tris buffer (pH8.5) at 120°C for 3min, [TA811442]) (1:500)



Immunohistochemical staining of paraffin-embedded Human colon tissue within the normal limits using anti-TFF3 mouse monoclonal antibody. (Heat-induced epitope retrieval by 1mM EDTA in 10mM Tris buffer (pH8.5) at 120°C for 3min, [TA811442]) (1:500)



Immunohistochemical staining of paraffin-embedded Human appendix tissue within the normal limits using anti-TFF3 mouse monoclonal antibody. (Heat-induced epitope retrieval by 1mM EDTA in 10mM Tris buffer (pH8.5) at 120°C for 3min, [TA811442]) (1:500)