

Product datasheet for **CF811440**

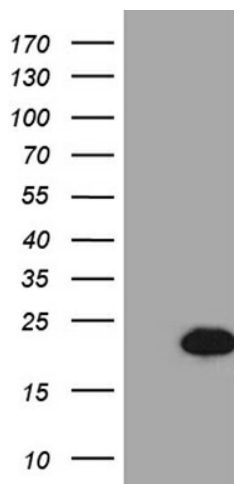
FHIT Mouse Monoclonal Antibody [Clone ID: OTI1D7]

Product data:

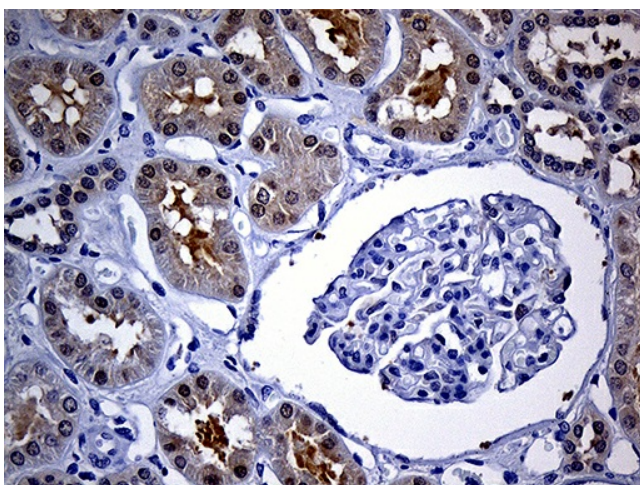
| | |
|--------------------------------|--|
| Product Type: | Primary Antibodies |
| Clone Name: | OTI1D7 |
| Applications: | IHC, WB |
| Recommended Dilution: | WB 1:2000, IHC 1:250 |
| Reactivity: | Human, Mouse, Rat |
| Host: | Mouse |
| Isotype: | IgG2b |
| Clonality: | Monoclonal |
| Immunogen: | Full length human recombinant protein of human FHIT (NP_002003) produced in HEK293T cell. |
| Formulation: | Lyophilized powder (original buffer 1X PBS, pH 7.3, 8% trehalose) |
| Reconstitution Method: | For reconstitution, we recommend adding 100uL distilled water to a final antibody concentration of about 1 mg/mL. To use this carrier-free antibody for conjugation experiment, we strongly recommend performing another round of desalting process. (OriGene recommends Zeba Spin Desalting Columns, 7KMWCO from Thermo Scientific) |
| Purification: | Purified from mouse ascites fluids or tissue culture supernatant by affinity chromatography (protein A/G) |
| Conjugation: | Unconjugated |
| Storage: | Store at -20°C as received. |
| Stability: | Stable for 12 months from date of receipt. |
| Predicted Protein Size: | 16.7 kDa |
| Gene Name: | fragile histidine triad diadenosine triphosphatase |
| Database Link: | NP_002003 Entrez Gene 14198 Mouse Entrez Gene 60398 Rat Entrez Gene 2272 Human P49789 |
| Synonyms: | AP3Aase; FRA3B |
| Protein Pathways: | Non-small cell lung cancer, Purine metabolism, Small cell lung cancer |



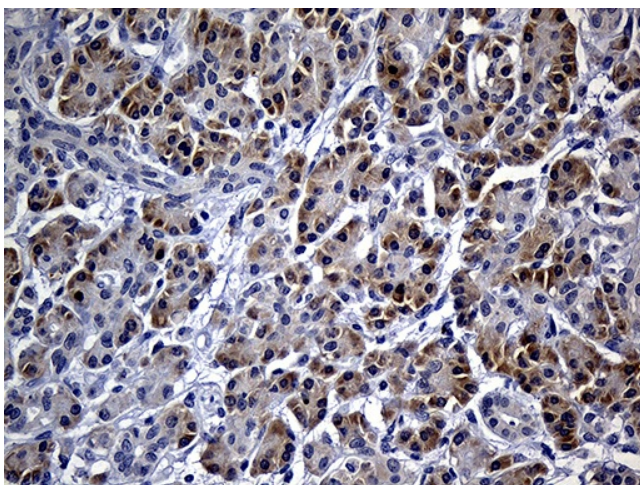
[View online »](#)

Product images:

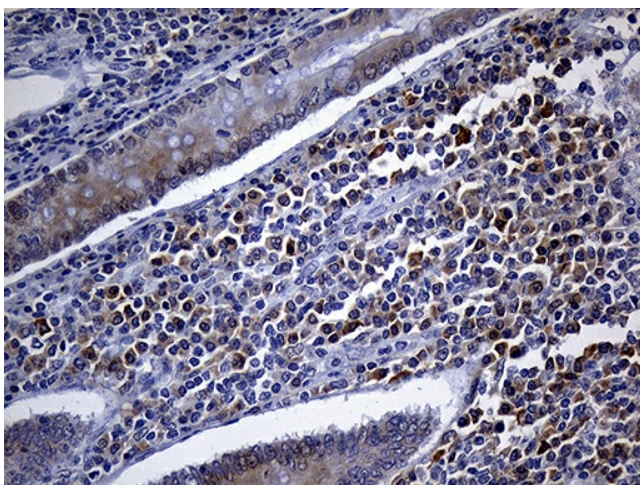
HEK293T cells were transfected with the pCMV6-ENTRY control (Cat# [PS100001], Left lane) or pCMV6-ENTRY FHIT (Cat# [RC207120], Right lane) cDNA for 48 hrs and lysed. Equivalent amounts of cell lysates (5 ug per lane) were separated by SDS-PAGE and immunoblotted with anti-FHIT (Cat# [TA811440])(1:2000). Positive lysates [LY419588] (100ug) and [LC419588] (20ug) can be purchased separately from OriGene.



Immunohistochemical staining of paraffin-embedded Human Kidney tissue within the normal limits using anti-FHIT mouse monoclonal antibody. (Heat-induced epitope retrieval by 1mM EDTA in 10mM Tris buffer (pH8.5) at 120°C for 3min, [TA811440]) (1:250)



Immunohistochemical staining of paraffin-embedded Human pancreas tissue within the normal limits using anti-FHIT mouse monoclonal antibody. (Heat-induced epitope retrieval by 1mM EDTA in 10mM Tris buffer (pH8.5) at 120°C for 3min, [TA811440]) (1:250)



Immunohistochemical staining of paraffin-embedded Human appendix tissue within the normal limits using anti-FHIT mouse monoclonal antibody. (Heat-induced epitope retrieval by 1mM EDTA in 10mM Tris buffer (pH8.5) at 120°C for 3min, [TA811440]) (1:250)