

## Product datasheet for **CF811408**

### LIMS2 Mouse Monoclonal Antibody [Clone ID: OTI5H8]

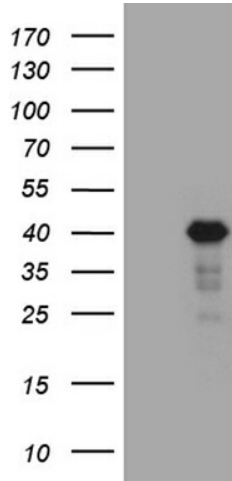
#### Product data:

Product Type:	Primary Antibodies
Clone Name:	OTI5H8
Applications:	WB
Recommended Dilution:	WB 1:500~2000
Reactivity:	Human, Mouse, Rat
Host:	Mouse
Isotype:	IgG1
Clonality:	Monoclonal
Immunogen:	Human recombinant protein fragment corresponding to amino acids 1-363 of human LIMS2 (NP_060450) produced in E.coli.
Formulation:	Lyophilized powder (original buffer 1X PBS, pH 7.3, 8% trehalose)
Reconstitution Method:	For reconstitution, we recommend adding 100uL distilled water to a final antibody concentration of about 1 mg/mL. To use this carrier-free antibody for conjugation experiment, we strongly recommend performing another round of desalting process. (OriGene recommends Zeba Spin Desalting Columns, 7KMWCO from Thermo Scientific)
Purification:	Purified from mouse ascites fluids or tissue culture supernatant by affinity chromatography (protein A/G)
Conjugation:	Unconjugated
Storage:	Store at -20°C as received.
Stability:	Stable for 12 months from date of receipt.
Predicted Protein Size:	41.3 kDa
Gene Name:	LIM zinc finger domain containing 2
Database Link:	<a href="#">NP_060450</a> <a href="#">Entrez Gene 225341</a> <a href="#">MouseEntrez Gene 361303</a> <a href="#">RatEntrez Gene 55679</a> <a href="#">Human Q7Z4I7</a>
Synonyms:	LGMD2W; PINCH-2; PINCH2

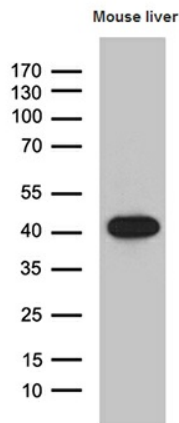


[View online »](#)

**Product images:**



HEK293T cells were transfected with the pCMV6-ENTRY control (Cat# [PS100001], Left lane) or pCMV6-ENTRY LIMS2 (Cat# [RC213746], Right lane) cDNA for 48 hrs and lysed. Equivalent amounts of cell lysates (5 ug per lane) were separated by SDS-PAGE and immunoblotted with anti-LIMS2 (Cat# [TA811408])(1:2000). Positive lysates [LY413411] (100ug) and [LC413411] (20ug) can be purchased separately from OriGene.



Western blot analysis of extracts (35ug) from mouse liver tissue lysate by using anti-LIMS2 monoclonal antibody (1:500).